

A detailed white line drawing of a Yokomo drift car chassis, showing the front suspension, steering knuckles, the central frame with various mounting points, and the rear suspension. The car is shown from a top-down perspective.

DRIFT PACKAGE

DRIFT RACER

この度はヨコモ製R/Cカーキットをお買い求め頂き、誠に有り難うございます。このキットは、ワールドチャンピオン メーカーであるヨコモの高性能・競技用R/Cカーです。
本説明書に従った正しい組立・安全な走行をして頂ければ、誰でも手軽に楽しむことができます。

Thank you for purchasing this Yokomo product. This high performance competition kit has been proudly manufactured by Yokomo - World Champion R/C car manufacturer.
Proper assembly of this product will provide fun, safe enjoyment.

R/C カーを安全に楽しんで頂くための 注意事項

お子様(中学生以下)が 組立・走行する際は、必ず保護者の方が付き添い 安全を確認して下さい。

組立の注意

- 幼児のいる場所では組み立てないで下さい。小さな部品を飲み込む等、非常に危険です。
- 組立の前に必ず内容をお確かめ下さい。万一不良部品、不足部品などがあった場合は、ヨコモ アフターサービス部までお問い合わせ下さい。
- 組立の前に説明書を最後まで読み、全体の流れをつかむと効率的な組立が出来ます。
- 組み立てる際は、様々な工具が必要になります。安全の為に必ず作業内容に合った工具を使用して下さい。又、カッターナイフ等を使用する際は危険を伴いますので、注意して下さい。
- 部品には様々な素材を使用しています。切削加工された金属パーツ等はエッジが鋭く、慎重な組立が必要となります。ケガをしないように注意して下さい。
- プラスチックパーツなどを切断する際は、切断した部品が飛び危険があるので注意して下さい。
- 回転部や駆動部は出来るだけスムーズに動作するように組み立てて下さい。
- 配線やコード類はきれいにまとめて下さい。回転部分や走行路面にコードが接触すると危険です。又、配線は確実に接続されていないとショートなどの恐れや、性能を十分に発揮出来ない場合があります。
- 必要以上の分解、改造をすると、安全性が低下したり走行性能が十分に発揮出来なくなる場合があります。
- 塗装は、周囲に火気の無いことを確認し、換気の良い場所で行って下さい。

走行の注意

- ヨコモ製R/Cカーは競技用の為、時速40kmを超える速いスピードが出るモデルもあります。ルールを守って安全な場所や、R/Cカー用サーキットで走らせて下さい。
- 公道等、周囲の人の迷惑になるような場所では絶対に走らせないで下さい。
- R/Cカーは電波を利用する為、何らかのトラブルで最悪の場合は暴走する事があります。狭い場所や室内は避け、出来るだけ広い、障害物のない場所で走らせて下さい。
- 周囲にR/Cカーを走らせている人がいる場合は、電波が重ならないように、周波数を確認し合って、安全を確かめて下さい。
- R/Cカーは水を嫌います。雨の日や、水たまりのある場所で走らせると、R/Cメカが壊れたり、暴走する危険があります。
- R/Cカーの駆動部分、ギヤやベルト、タイヤなどは高回転で回ります。バッテリーを接続した後は危険ですので、回転部分に手を触れないで下さい。
- 走行後のR/Cカーは各部が高温になる事があります。危険ですので冷却期間をおいてから、メンテナンスなどをして下さい。

走らせる手順

- ①タイヤが空転するように、台の上にR/Cカーを置きます。
- ②スピードコントローラのスイッチがOFFになっている事を確認してから、モーターとバッテリーを接続します。
- ③送信機のアンテナを伸ばし、スイッチをONにします。(送信機の電圧が下がっていると危険です。常に電圧の高い状態で使用して下さい。)
- ④受信機のスイッチをONにします。

走行終了手順

- ①スピードコントローラのスイッチをOFFにします。
- ②バッテリーの接続を外します。
- ③送信機のスイッチをOFFにし、アンテナを縮めます。

バッテリーの取り扱い

(バッテリーに付属の説明書に基づき使用して下さい。)

- バッテリーを充電する際は、周囲に燃えやすい物のない安全な場所で行って下さい。又、高温な場所での充電も避けて下さい。
- バッテリーの充電中は充電状況を常に確認して下さい。充電器の誤動作などで過充電すると、最悪の場合は発火する危険性があります。バッテリー温度が50度を越えたら充電を中止して下さい。
- 走行後のバッテリーは高い温度になります。連続使用するとバッテリーを傷める事になりますので、冷却期間を置いてから充電して下さい。又、走行後のバッテリーはコンディション放電する事によって、性能を持続させる事が出来ます。
- 不要になったバッテリーは一般のゴミと一緒に捨てず、お手数でも電池専用の回収箱に捨てて下さい。

モーターの取り扱い

(モーターに付属の説明書に基づき使用して下さい。)

- 7.2Vのバッテリーでモーターのから回しをすると危険です。モーター内部を破損し部品が飛び出す事も考えられますので、もしモーターのブレークインをする時は、モーターをしっかり固定し3~5V程度でから回して下さい。
- モーターは定期的なメンテナンスが必要です。劣化するとスピードが出なくなったり、走行時間が短くなります。定期的にクリーニングしたり、ブラシが減ってきたら交換する等のメンテナンスをして下さい。
- モーターの性能に合ったギヤ比を選択して下さい。ギヤ比が最適でないとモーターの性能を十分に発揮出来ないだけでなく、他のR/Cメカを壊す原因にもなります。
- 走行後のモーターは非常に高い温度になります。連続走行するとモーターを傷める事になりますので、冷却期間を置いてから走行して下さい。

PRECAUTIONS FOR SAFE ENJOYMENT OF YOUR R/C CAR

For children under the age of 13, parental guidance is recommended when running.

ASSEMBLY PRECAUTIONS

- Do not assemble around small children. The parts can be dangerous if accidentally swallowed.
- Check the contents carefully before assembly. Please contact Customer Support if you happen to notice any defective or missing items.
- You will find the assembly process much easier by carefully reading through the manual, and familiarizing yourself with the instructions.
- Many different tools are required during assembly. For safety purposes, please use suitable tools. Exercise extra caution when using a sharp tool such as a hobby knife.
- Many different materials are used for the parts. Use extra care when handling parts with sharp edges, such as machined metal parts.
- When cutting plastic parts, watch for any flying parts.
- Try to assemble any rotating parts or drivetrain parts as smooth as possible.
- Bundle wires neatly away from the ground or any moving drivetrain components. Make sure that all wires are properly connected to prevent shorting.
- Unnecessary modifications may be unsafe and hinder performance.
- Always paint in a well ventilated area away from flames.

PRECAUTIONS BEFORE RUNNING

- Yokomo R/C cars are built for competition use, and some models may exceed speeds of 40km per hour. Practice common sense and run the car in open safe places, or R/C car tracks.
- Do not run the car on public roads with high amounts of traffic, or in areas that may cause an inconvenience to people in that area.
- R/C cars are controlled using a radio frequency. In a worst-case scenario, radio interferences may cause loss of control.
- If others near you are running R/C cars, confirm that they are not running on the same frequency.
- R/C cars do not like water. Avoid running on rainy days, or areas with water puddles. Exposure of the electronics to water may cause loss of control or damage to the electronics.
- The drivetrain of an R/C car consists of many moving parts like gears, belts, shafts, and tires. Avoid touching these areas when the battery is connected.
- Many parts of an R/C car will become hot after running. Allow the parts to sufficiently cool before conducting any maintenance.

BEGINNING A RUN

- ①Place the R/C car on a stand so the wheels are off the ground.
- ②Confirm that the speed controller switch is OFF, and connect the motor and battery.
- ③Extend the transmitter antenna and turn the switch ON. (It is unsafe to use a transmitter with low voltage. Make sure that the transmitter batteries are good before running)
- ④Turn the speed controller switch ON.

FINISHING A RUN

- ①Turn the speed controller switch OFF.
- ②Disconnect the battery.
- ③Turn the transmitter switch OFF, and retract the antenna.

BATTERY USAGE

(Carefully read the instruction included with the batteries.)

- When charging batteries, make sure that the surrounding area is void of anything highly flammable. Also avoid charging in high-temperature locations.
- When charging batteries, frequently monitor the charging it catch on fire. If the battery reaches 50 degrees Celcius or more, stop charging.
- Batteries will become hot after running. Continuous use of the battery pack may result in damage to the cells. Allow the battery too cool down before re-charging. Using a battery conditioner after running may prolong the life and performance of the battery.
- Please do not discard old battery packs in the trash. Although inconvenient, please locate a battery disposal center.

MOTOR USAGE

(Carefully read the instruction included with the motor.)

- Connecting a 7.2V battery directly to the motor can be very dangerous. This may cause the internal parts of the motor to break apart, causing some parts to fly out of the motor. To break-in the motor, safely secure the motor and run the motor at about 3-5V.
- Motors require periodic maintenance. Slower speeds and decreased run times may indicate a worn-out motor. Periodically clean the motor and change the brushes when needed.
- Choose a gear ratio that matches the power characteristics of the motor. Using a gear ratio unsuited to the characteristics of the motor will not only prevent the motor from performing at its optimum, but may even cause damage to the other electronics.
- Motors will generally become very hot after running. Continuous running will reduce the life of the motor. Allow the motor to sufficiently cool between each run.

【組み立てに必要な物】

ACCESSORIES AND TOOLS NEEDED FOR [DRIFT RACER] ASSEMBLY

■ 走行の為に別にお買い求め頂く物 ■

(組立済キットでは必要ありません)

ADDITIONAL ITEMS REQUIRED FOR USE (NOT INCLUDED IN KIT)

- 2チャンネルプロポ (1サーボ 1アンプ仕様)
TWO CHANNEL R/C SURFACE RADIO SYSTEM
AND ELECTRONIC SPEED CONTROL
- 走行用 7.2V バッテリーパック
7.2V BATTERY PACK
- 走行用バッテリー充電器
BATTERY CHARGER
- 走行用モーター
MOTOR
- タイヤ(タイヤ付キットは不要)
TIRES
- 走行用ボディー(ボディー付キットは不要)
BODY
- ボディー塗装用カラー
BODY SPRAY PAINT

■ 袋以外の箱に入っている物 ■

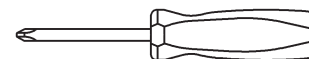
(組立済キットでは入っていません)

PARTS INCLUDED IN KIT

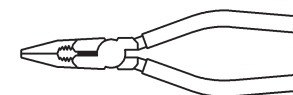
- | | |
|-----------|--------------|
| ● バンパー | BUMPER |
| ● ホイール | WHEELS |
| ● タイヤ | TIRES |
| ● メインシャーシ | MAIN CHASSIS |

■ 別途用意する工具 ■

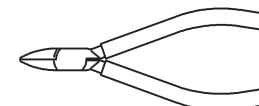
ASSEMBLING TOOLS REQUIRED (NOT INCLUDED IN KIT)



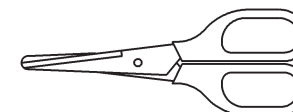
ドライバー (大,小)
SCREW DRIVER (SMALL & LARGE)



ラジオペンチ
NEEDLE NOSE PLIERS



ニッパー
SIDE CUTTER



ハサミ
SCISSORS



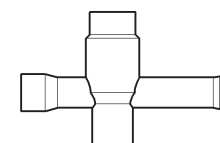
カッター
HOBBY KNIFE

■ キットに入っている工具 ■

TOOLS (INCLUDED)



六角レンチ
ALLEN WRENCH
(1.5mm)



十字レンチ
NUT WRENCH

**[DRIFT RACER]の性能を十分に発揮させる為にイラストを
良く参照し説明の順番に従って確実に組み上げて下さい。**

**For assembly, follow the figures and the instructions closely
so that your [DRIFT RACER] will perform at its best!!**

[List of Parts Used]

 --x8 3x12mm FH TP screw

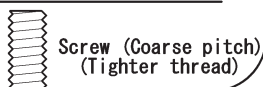
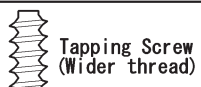
 --x2 Front suspension mount

 --x2 Rear suspension mount

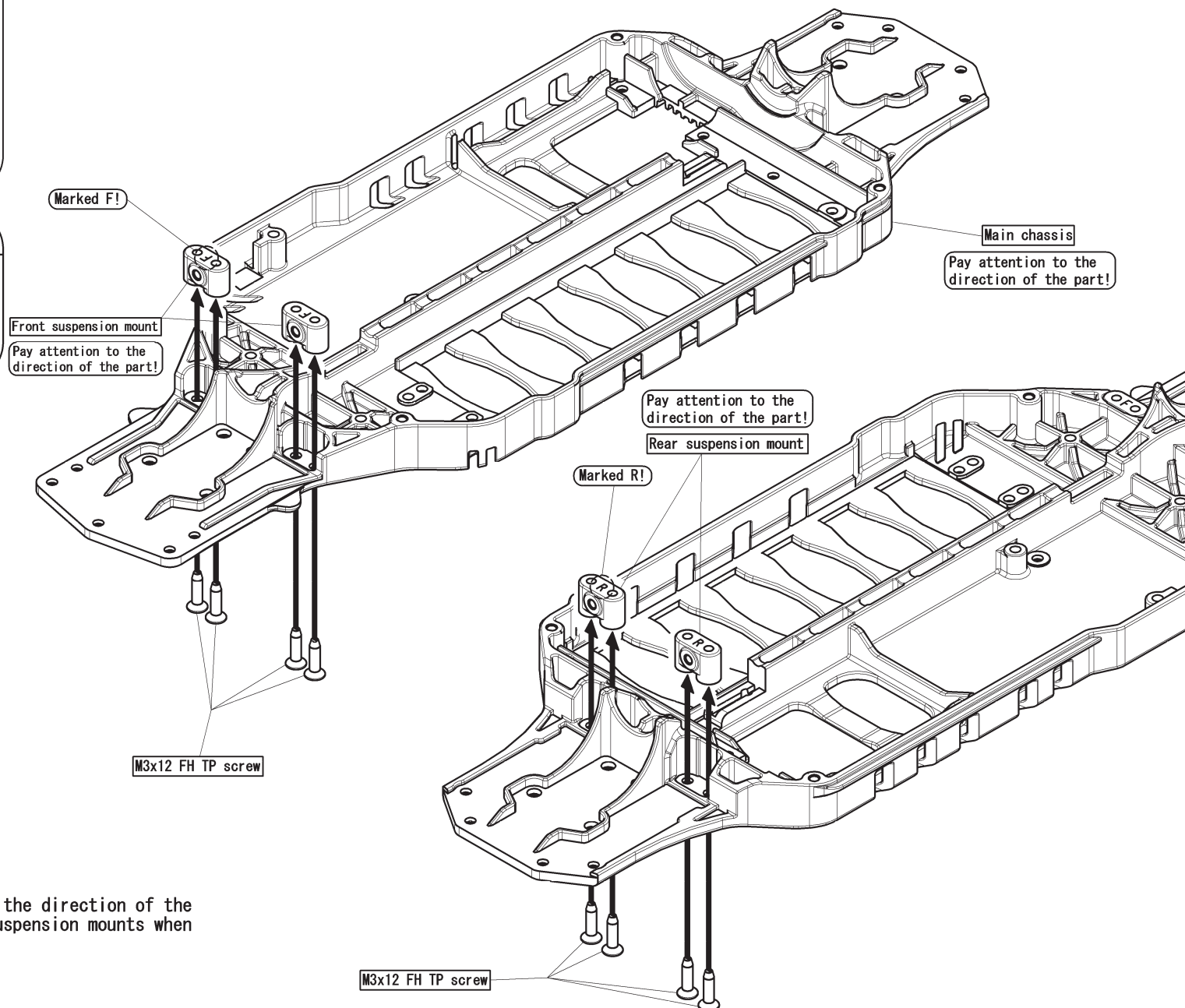
【Read before assembly!】

The screws included in this kit have 2 different types of thread. Pay special attention to where the screws are used.

※Tapping screws cannot be used on metal parts.



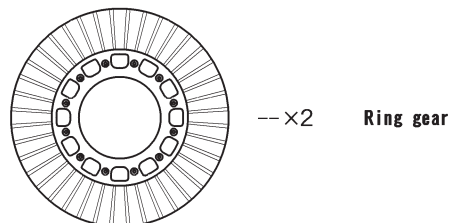
1 Suspension Mount Installation



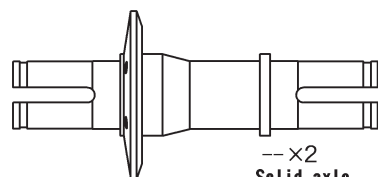
Important!— Pay attention to the direction of the front and rear suspension mounts when installing.

[List of Parts Used]

[Solid axle parts]



--x2 Ring gear



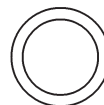
--x2 Solid axle



--x4 Outdrive ring



--x6 2x5mm TP screw



--x4 10x13mm shim



--x4 10x15mm bearing

[Transmission parts]



--x2 2.6x6mm flat head screw (w/threadlock applied)



--x2 3x8mm flat head screw



--x1 3x12mm flat head screw



--x4 3x10mm FH TP screw



--x8 3x12mm TP screw



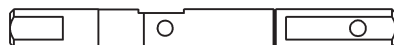
--x1 Hub pin



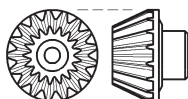
--x1 O-ring



--x1 Front input shaft



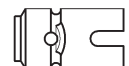
--x1 Rear input shaft



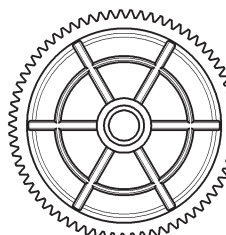
--x2 Drive gear



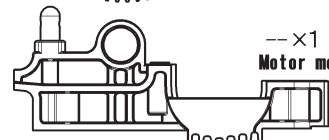
--x2 Drive cup clip



--x2 Center drive cup



--x1 Spur gear



--x1 Motor mount

Other transmission case and chassis brace parts



--x1 5x8mm shim



--x2 8x11mm shim

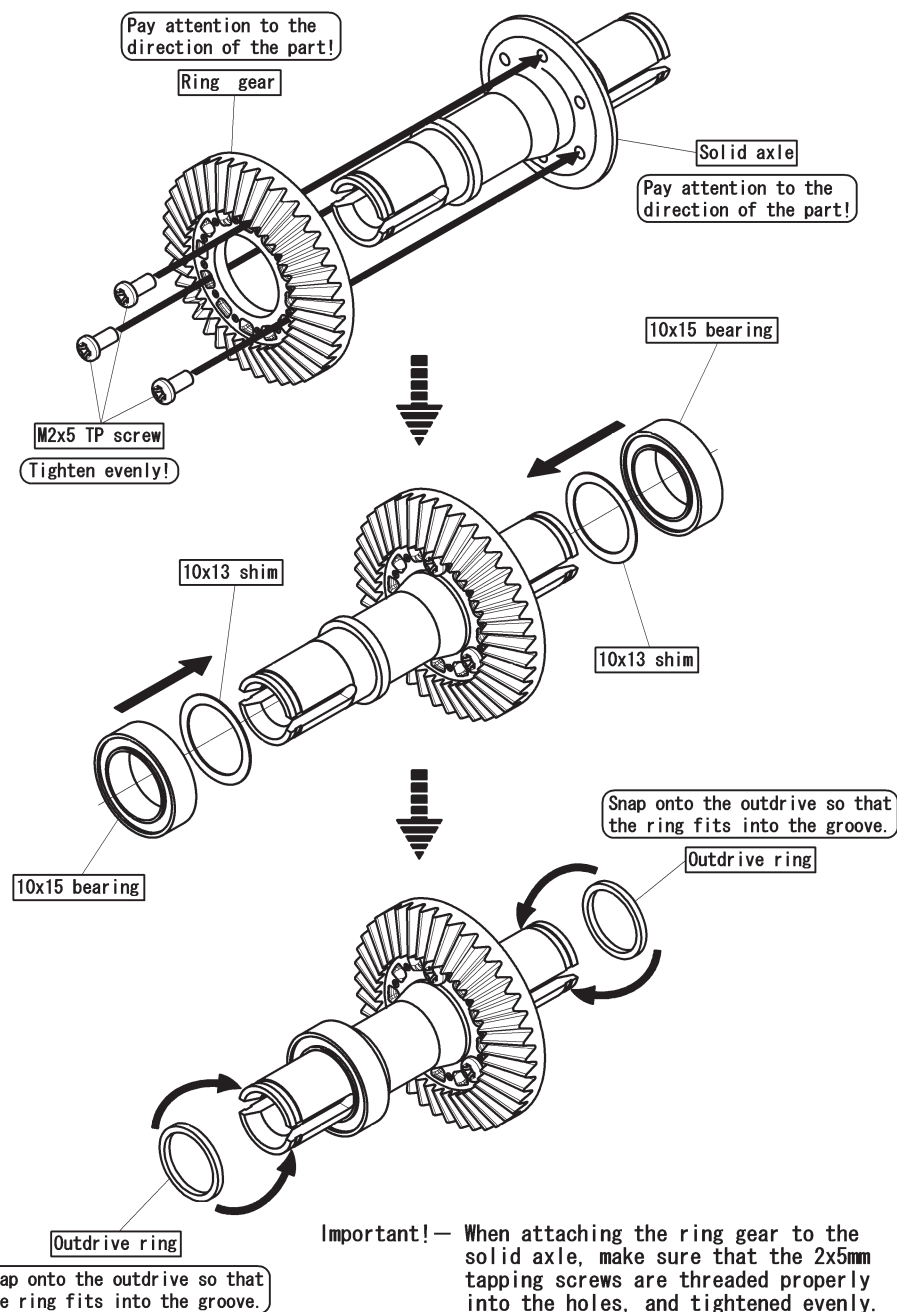


--x3 5x10mm bearing

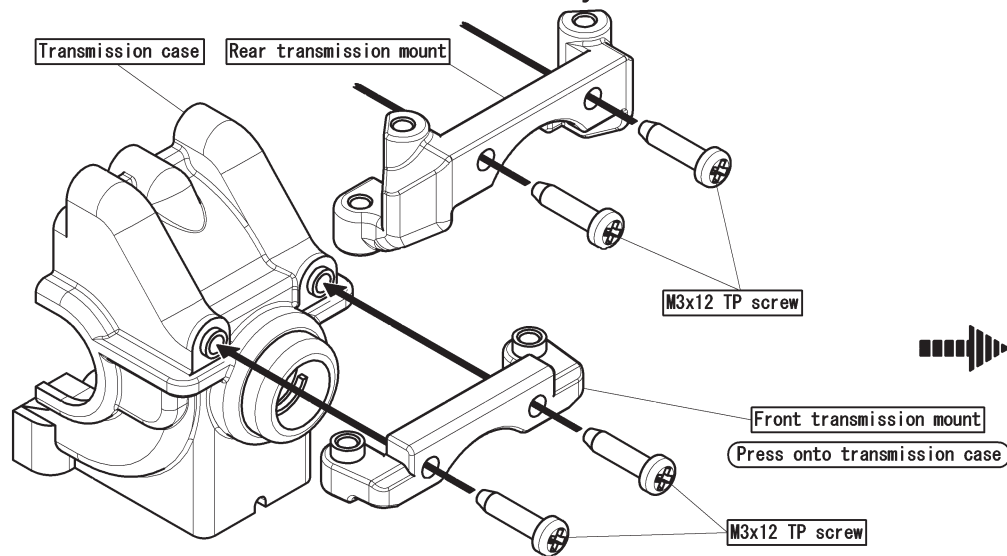


--x2 8x14mm bearing

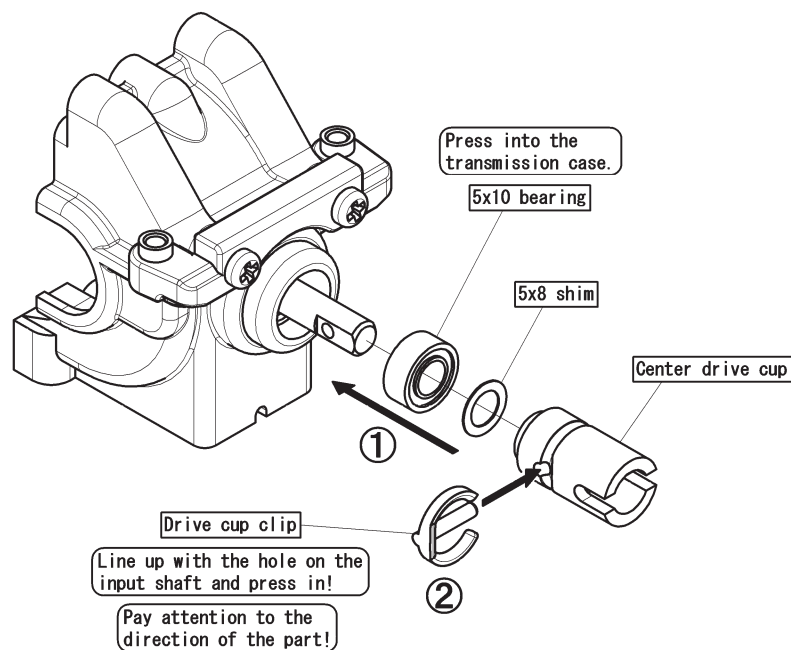
2 Solid Axle Assembly (2 Assemblies required.)



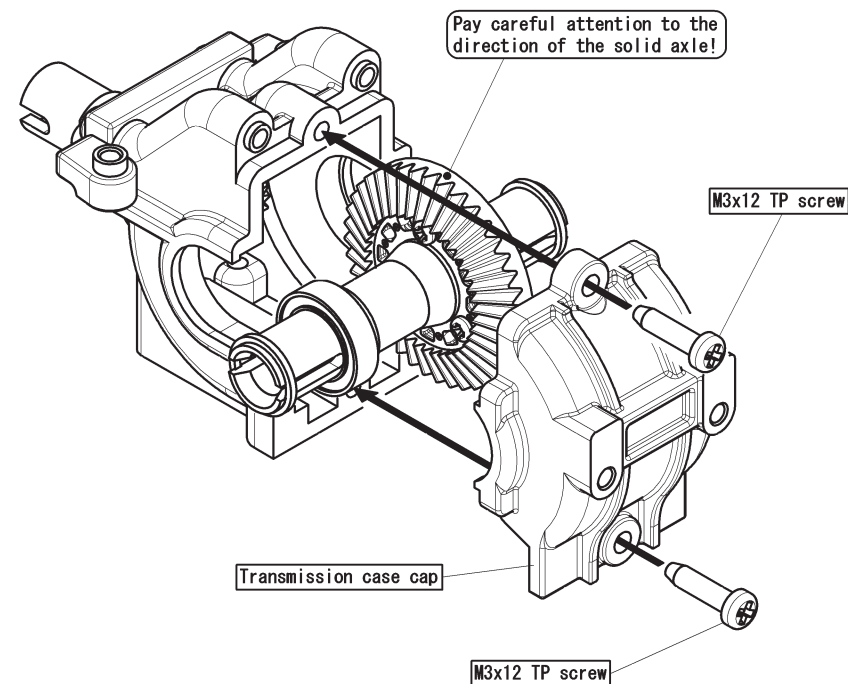
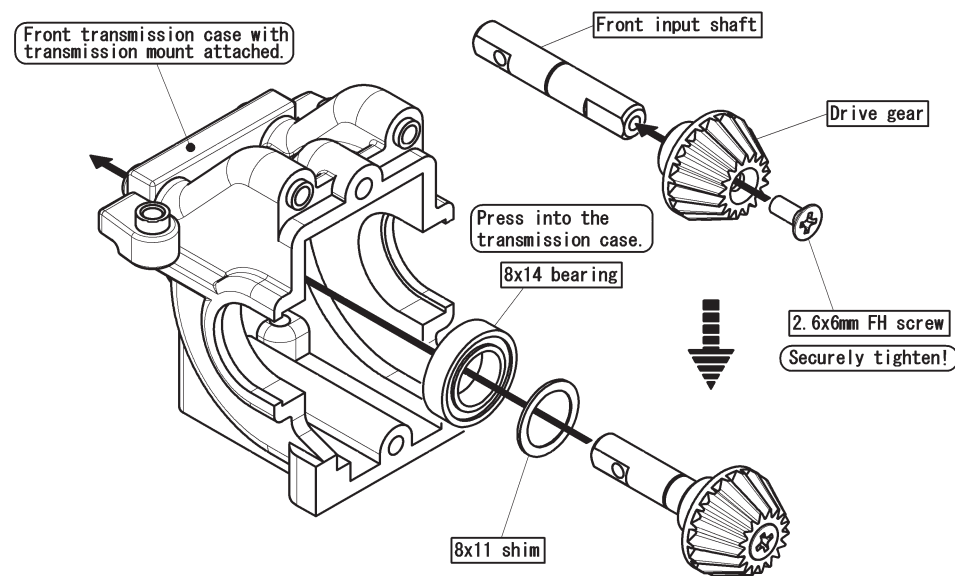
3 Front Transmission Case Assembly



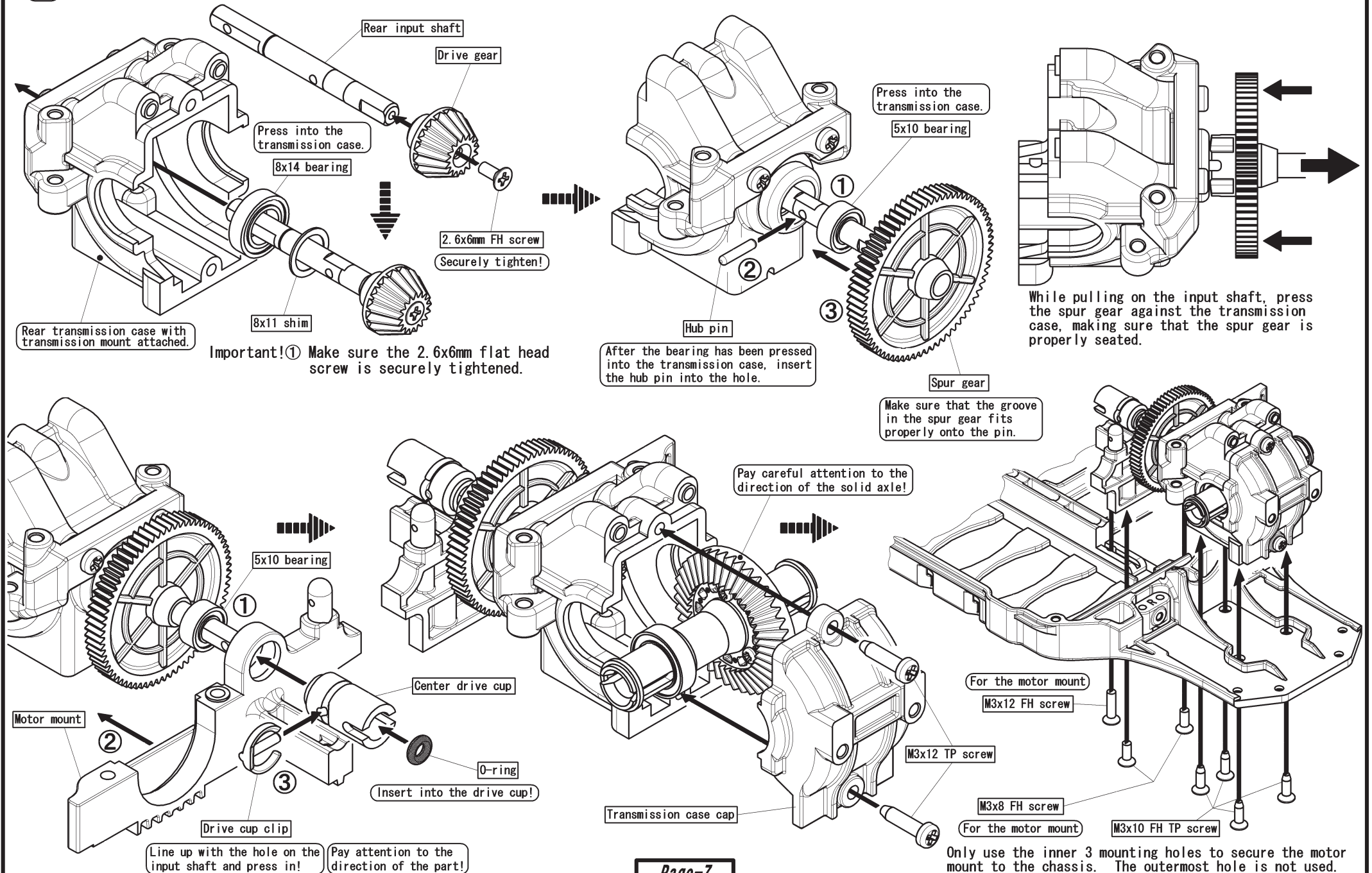
Attach the front transmission mount to the transmission case using the 3x12mm TP screws. Also attach the rear transmission mount to the other transmission case in the same way (to be used on the following page.)



Important!— Make sure the 2.6x6mm flat head screw is securely tightened.

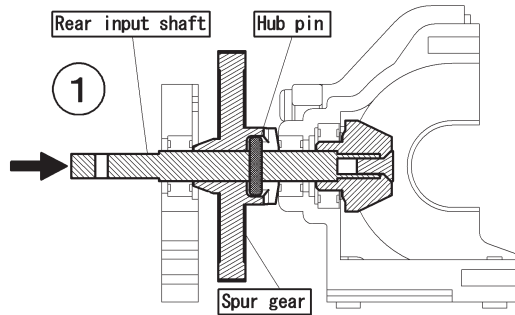


4 Rear Transmission Case Assembly

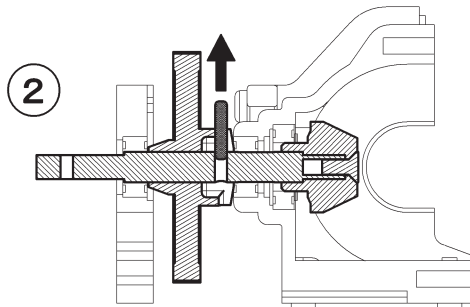


Maintenance Tip!

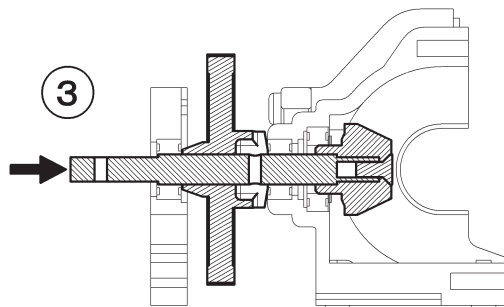
Spur Gear Hub Removal



Remove the transmission cap, solid axle and center drive cup. Slide the input shaft towards the rear.

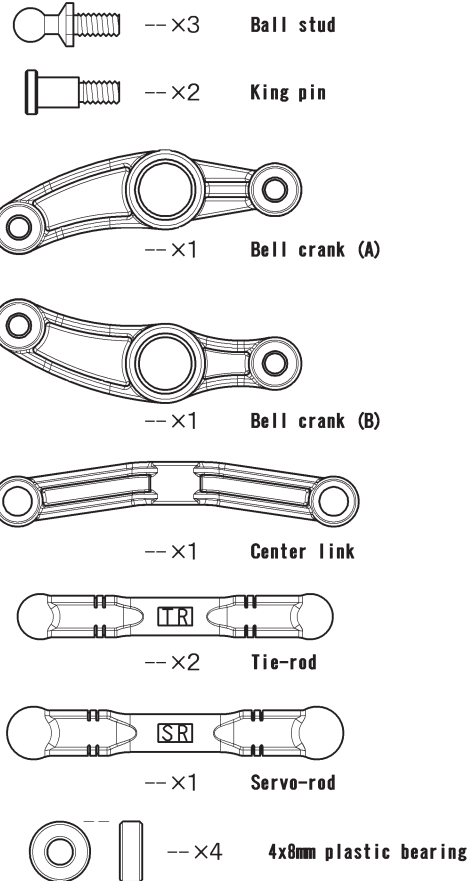


Slide the rear input shaft until the hub pin is visible inside the groove (of the spur gear), and pull out the hub pin. (If the hub pin falls out easily, lightly coat it with a rubber type adhesive.)



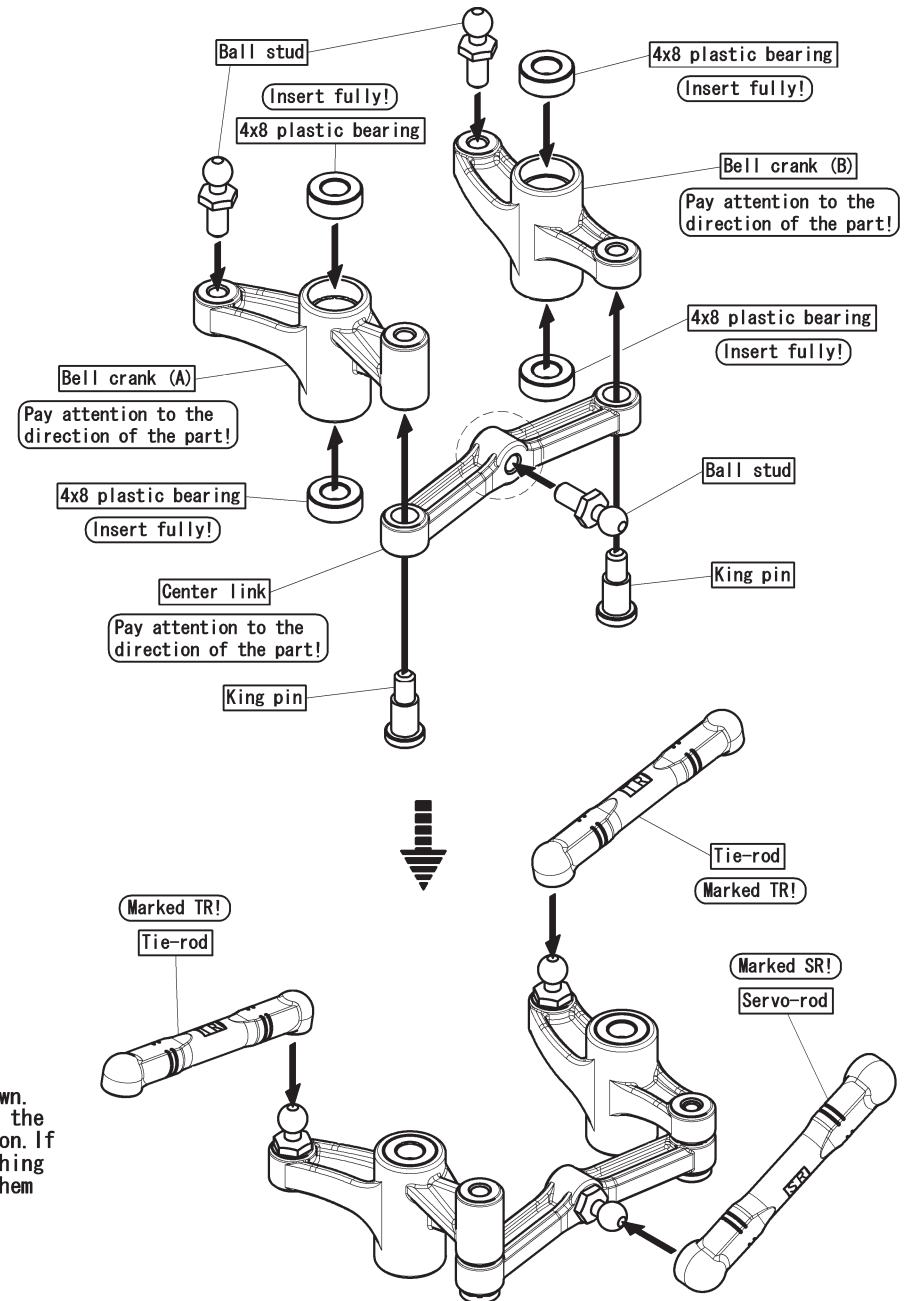
Pull out the rear input shaft completely to remove the spur gear. (When re-assembling, repeat the above steps in reverse.)

[List of Parts Used]

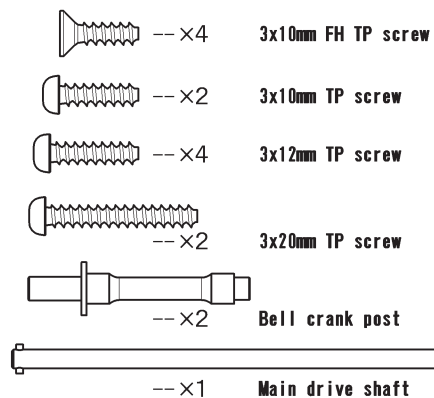


Attach the tie rods to the ball studs as shown. (When attaching the tie rods, make sure that the correct tie rod is used in the correct location. If you happen to experience difficulty in attaching the tie rods, use a pair of pliers to snap them into place.)

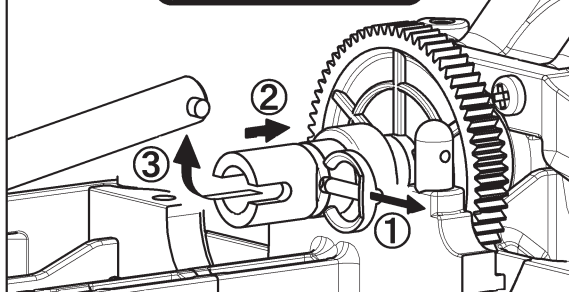
5 Bell Crank Assembly



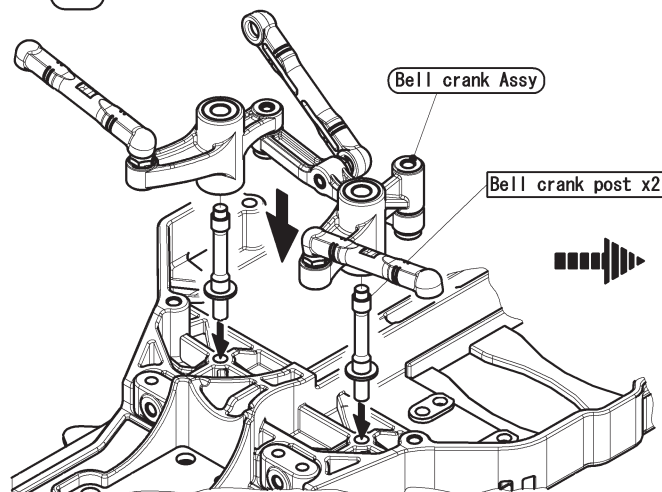
[List of Parts Used]



Maintenance Tip!



⑥ Front Transmission Case, Chassis Brace Installation



Insert the two bell crank posts into the chassis, and slide the previously assembled bell crank assembly onto the posts.

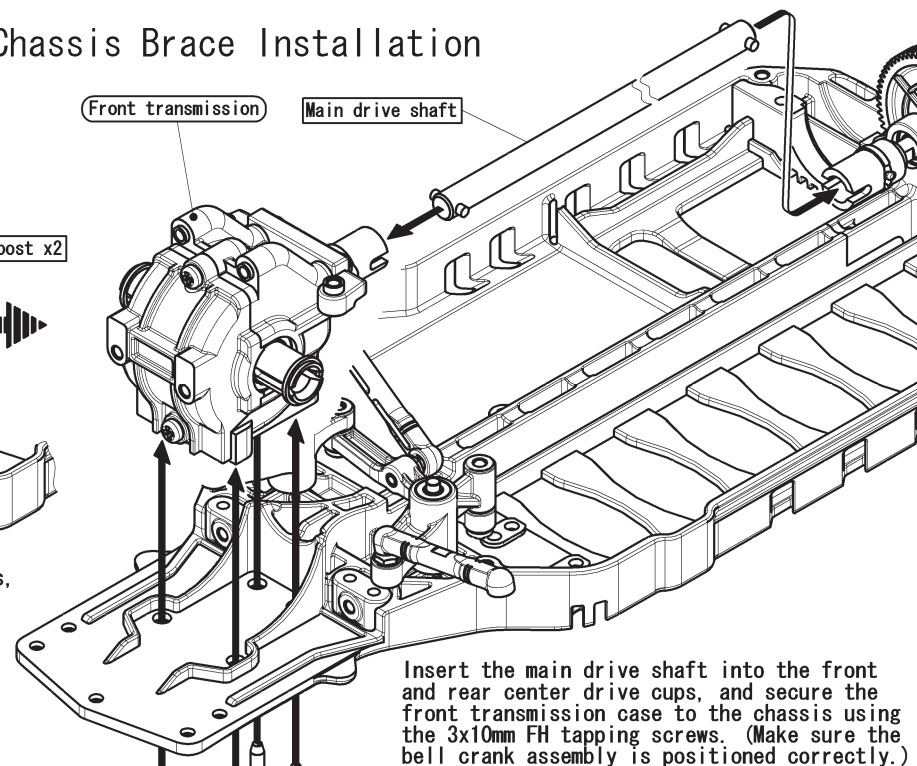
M3x10 TP screw

M3x20 TP screw

M3x10 FH TP screw

Front chassis brace

Secure the front chassis brace with the screws as shown.

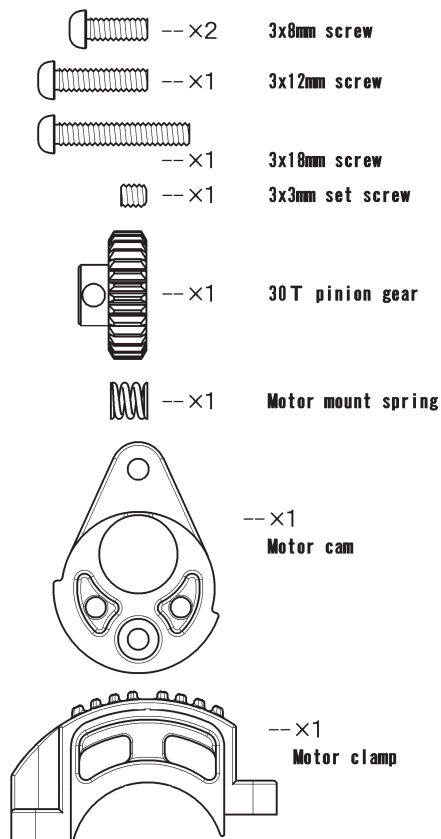


M3x12 TP screw

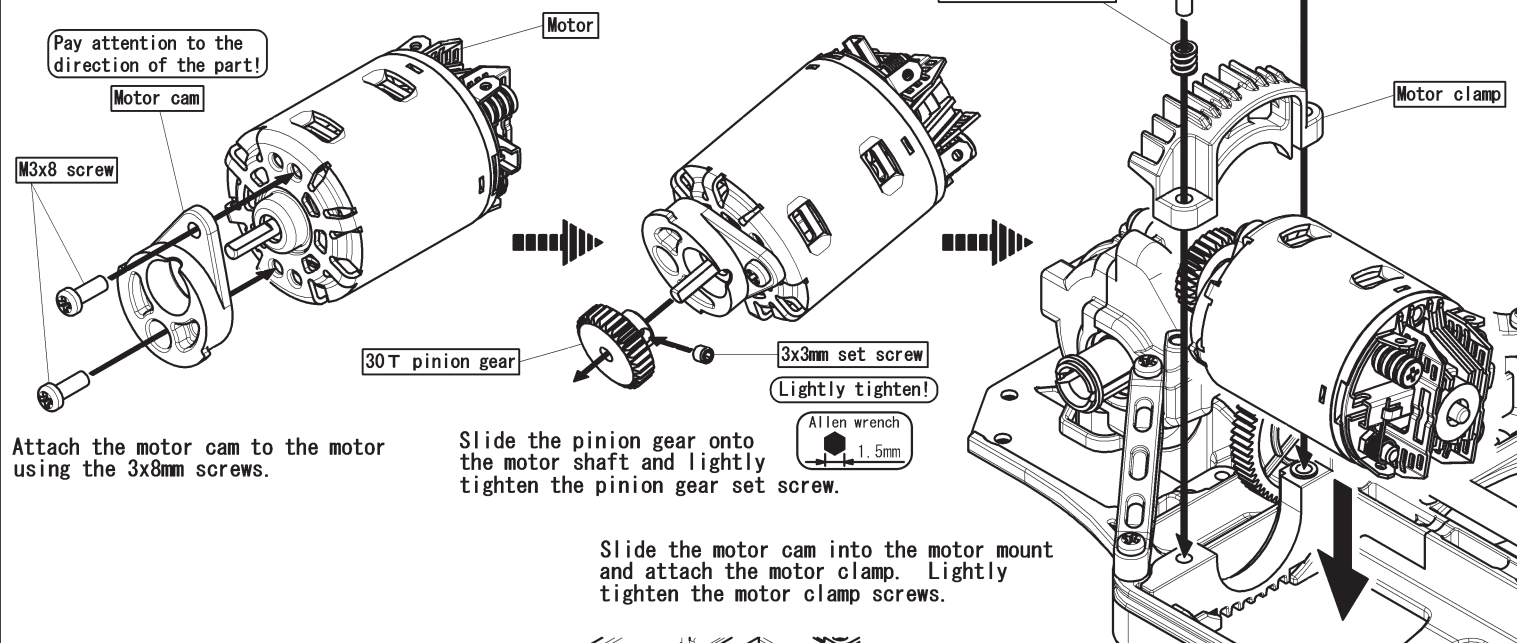
Rear Chassis Brace

Assemble each side in the same manner.

[List of Parts Used]

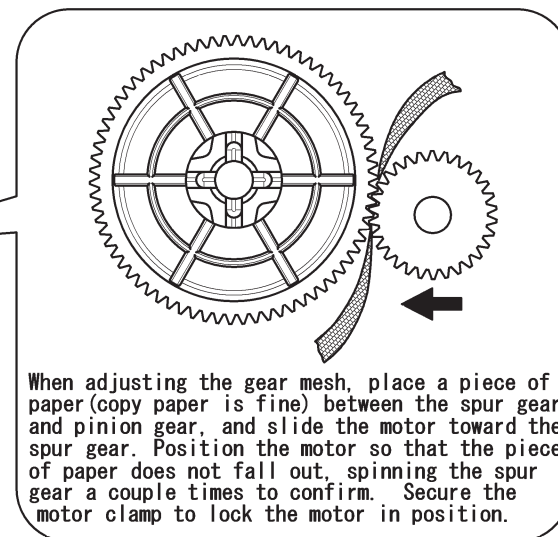
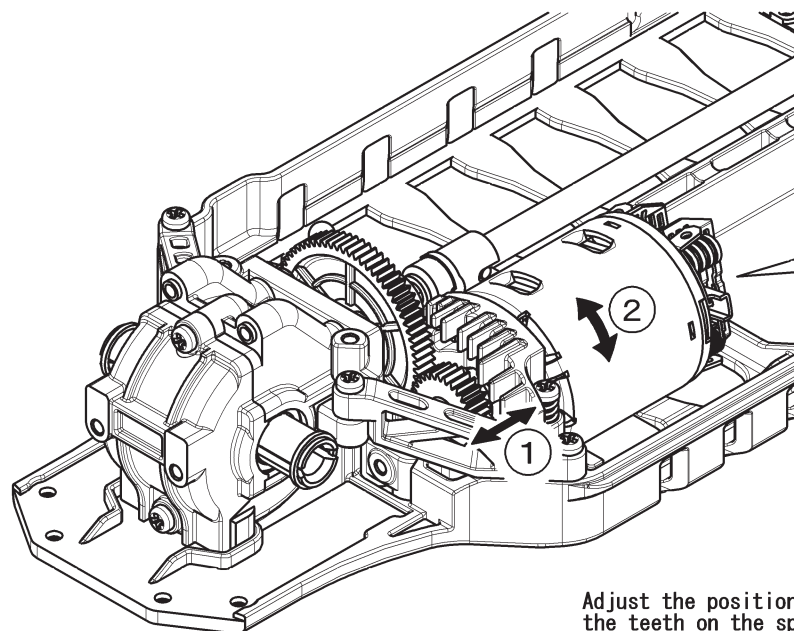


7 Motor, Pinion Gear Installation



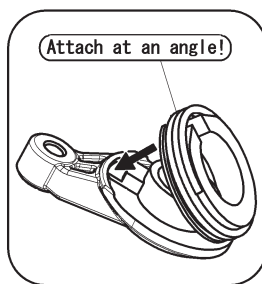
Important!

- ① Install the pinion so that the set screw is tightened onto the flat portion of the motor shaft.
- ② Adjust the gear mesh to allow a very small gap between the teeth of the pinion and spur gear.
(improper adjustment of the pinion and spur may result in damage to the gears.)
- ③ Continuous running of the motor will result in shorter motor life. Allow the motor to cool between runs.



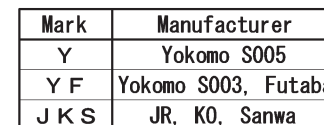
Adjust the position of the pinion gear so that it lines up with the teeth on the spur gear. Secure the pinion gear in position by tightening the set screw. Once the gear mesh is adjusted and the M3x12 screw is tightened, tighten the M3x18 screw until the spring is compressed, then back off one full turn.

8 Servo Saver, Servo Installation



Servo horn ring

Servo horn spring



Approx. 5mm

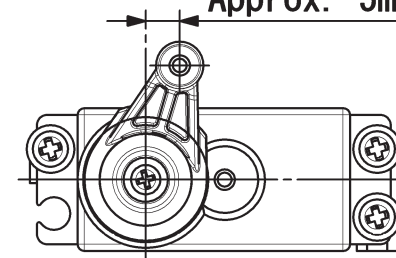
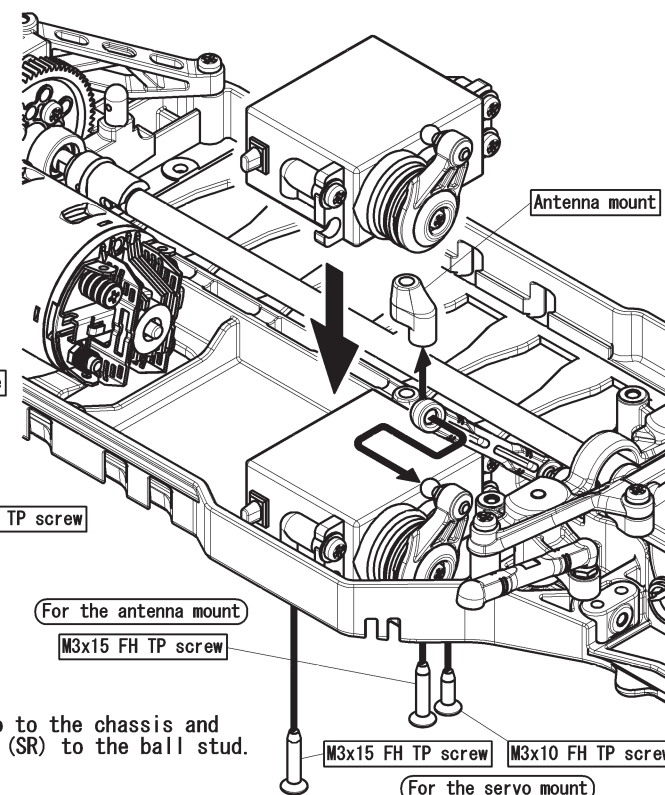


Diagram illustrating the assembly of a servo motor, showing the servo motor unit and its associated components:

- Servo mount (large)
- Servo mount (small)
- Servo
- Washer
- M3x10 TP screw
- Servo horn plate
- M2. 6x10
- Servo horn lower
- (Servo horn upper assy)




② Kit includes 3 servo horns. Select the servo horn designated for use with the servo being used. (Using an incorrect servo horn may result in damage to the servo.)


Install the servo to the chassis and attach servo-rod (SR) to the ball stud.

[List of Parts Used]

 --x2 3x10mm TP screw

 --x2 3x12mm TP screw

 --x2 3mm nut

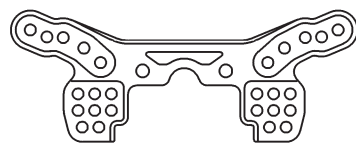
 --x4 Ball stud

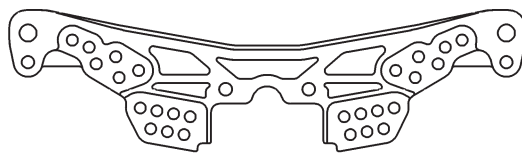
 FL
--x1 Front upper camber link(Left)

 FR
--x1 Front upper camber link(Right)

 RL
--x1 Rear upper camber link(Left)

 RR
--x1 Rear upper camber link(Right)

 --x1 Front shock tower

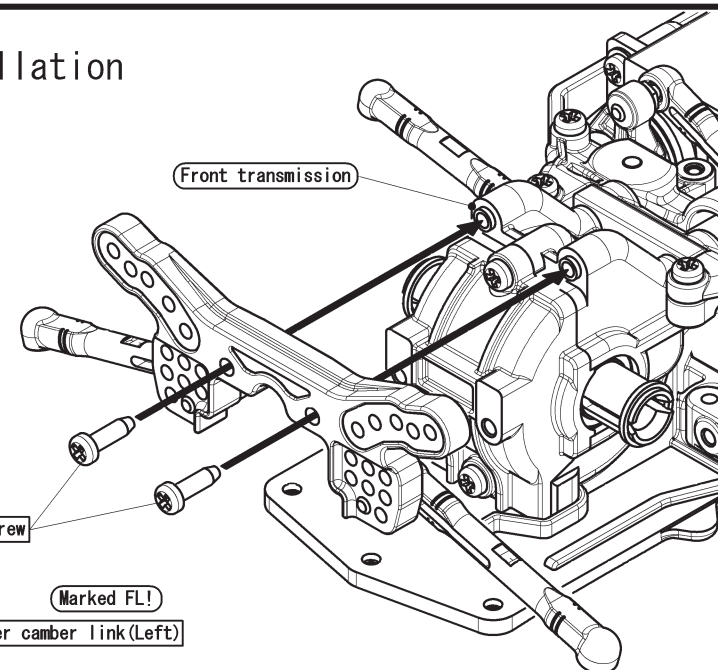
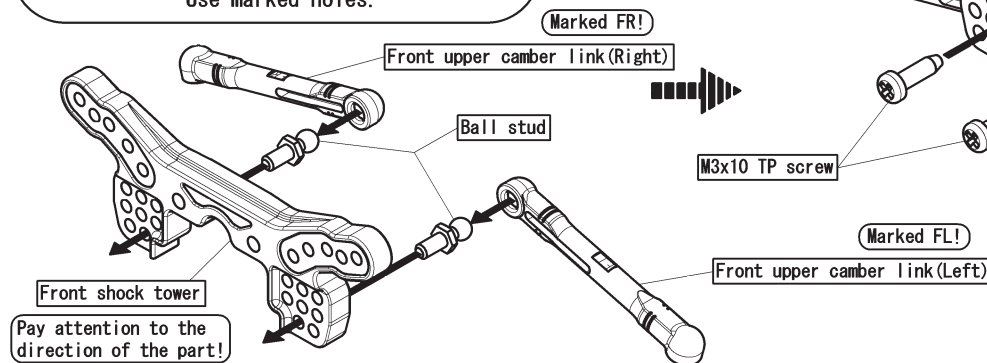
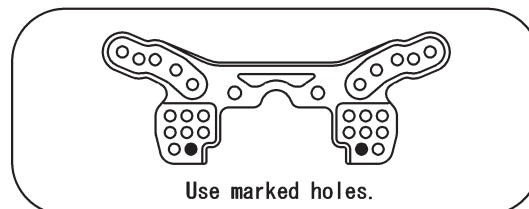
 --x1 Rear shock tower

After the ball studs and upper camber links have been attached to the shock towers, attach them to the transmission cases using the specified screws.

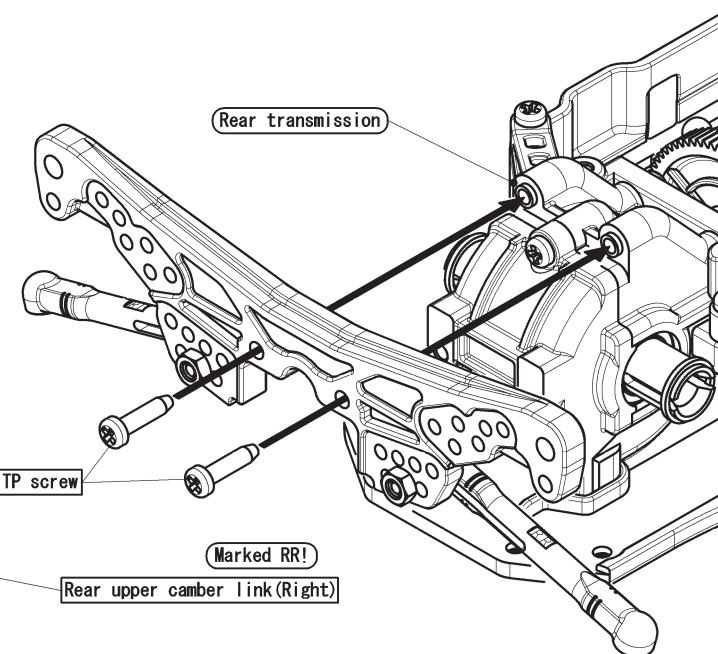
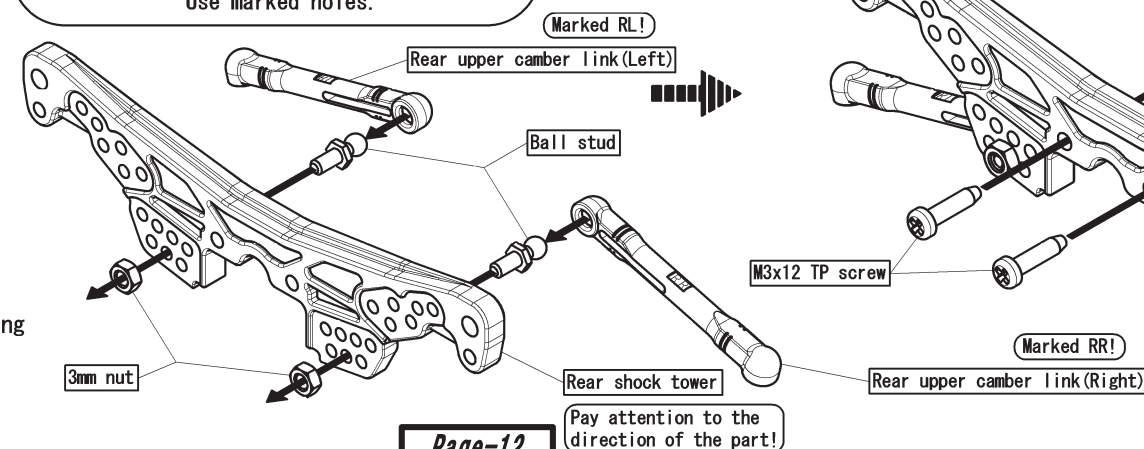
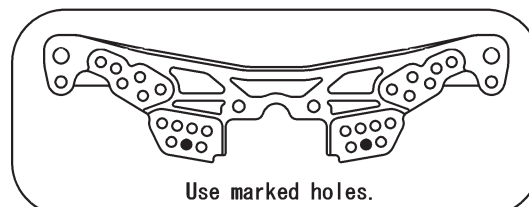
Important!—Make sure the shock towers are facing the right direction when attached.

9 Upper Camber Link, Shock Tower Installation

Installing on front shock tower

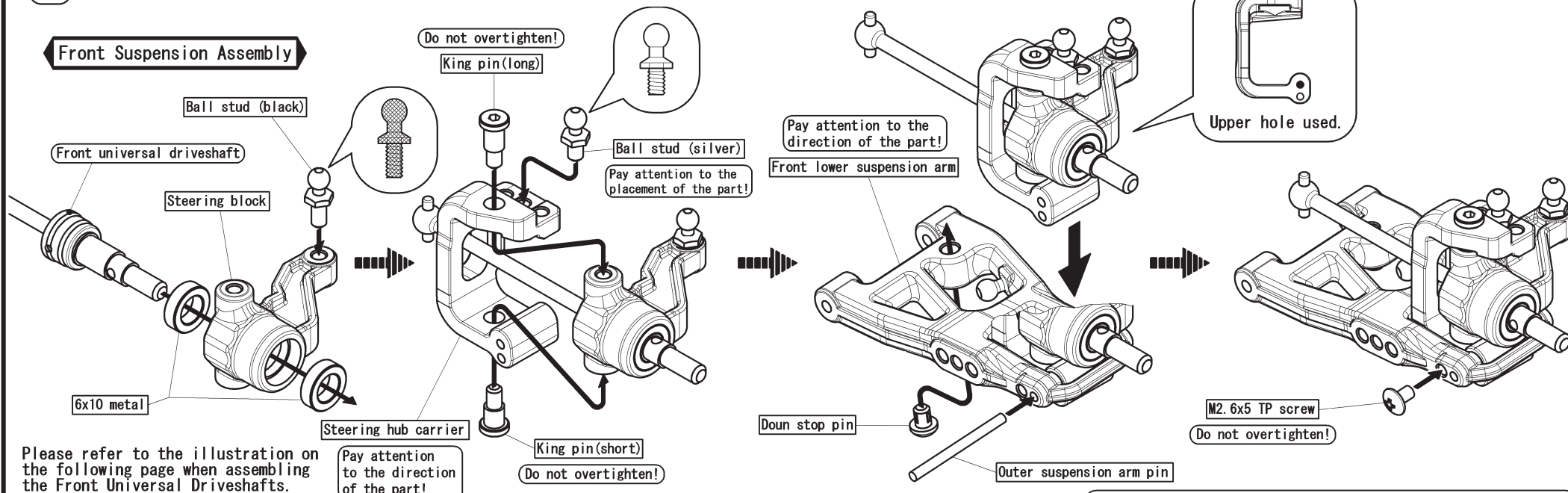


Installing on rear shock tower



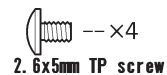
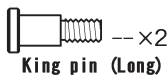
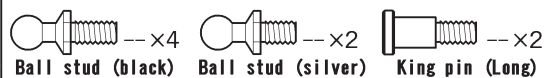
10 Front & Rear Suspension Assembly

Front Suspension Assembly

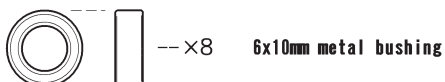


【 Assemble each side in the same manner. 】

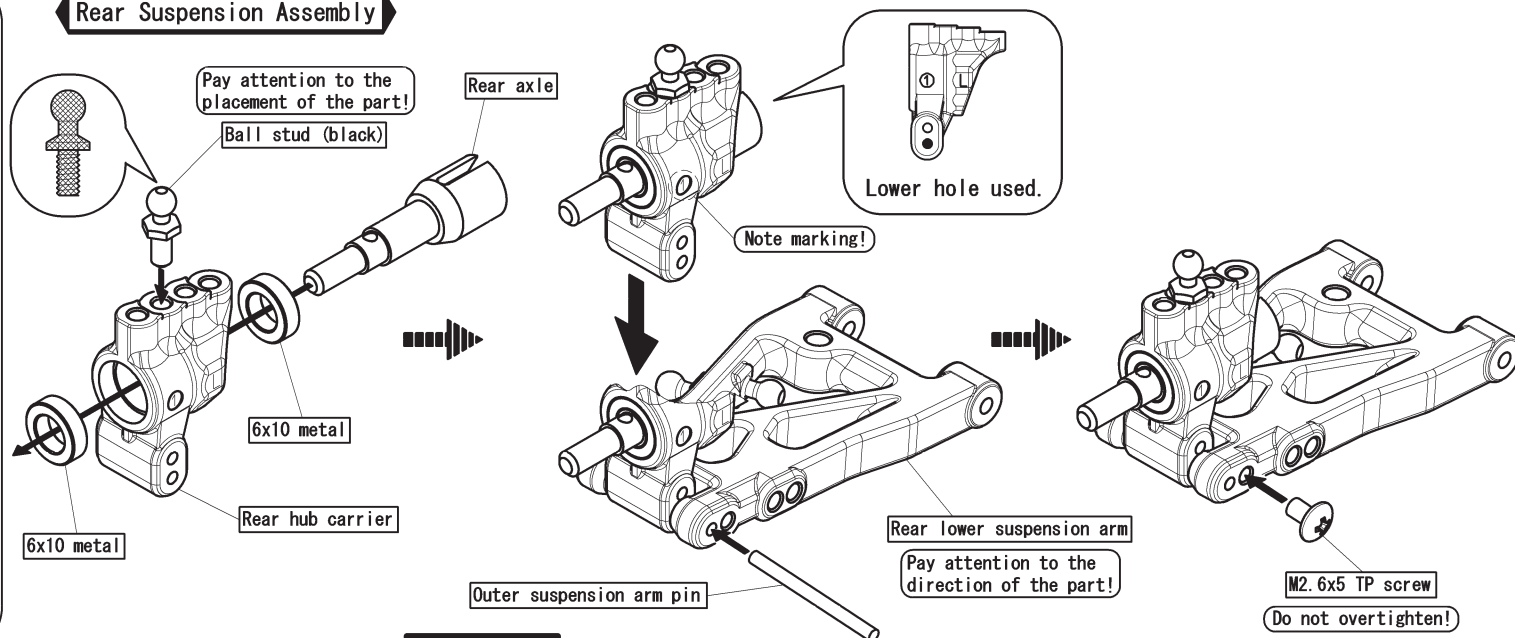
[List of Parts Used]



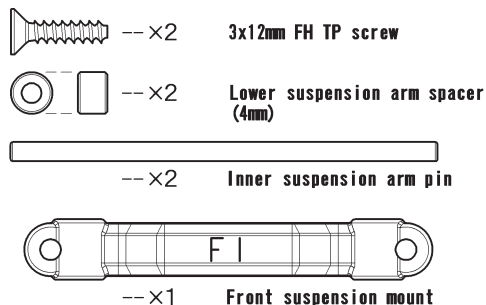
Also included: front hub carrier x 2, steering block x2, rear hub carrier x2, front & rear suspension arm x2



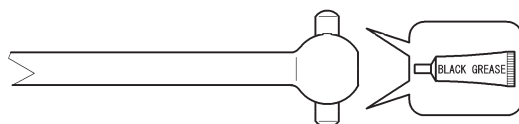
Rear Suspension Assembly



[List of Parts Used]



[Read before assembly!]



Apply (black grease) to the front and rear dog bone pins.

Important!

- ① Always apply black grease to the front dog bone pins. (Black grease sold separately.)
- ② The front suspension arms assembled in the previous step are different left and right. Follow the diagram closely during assembly.
- ③ Refer to the illustration on the right when assembling the Front Universal Driveshafts. Please make sure to apply black grease(sold separately) to the moving parts. (Follow the directions in reverse when disassembling.)

11 Front Lower Suspension Arm Installation

Pay attention to the direction of the part!
Front lower suspension arm

Lower suspension arm spacer, thick (4mm)

Inner suspension arm pin

M3x12 FH TP screw

Install after the suspension mount has been attached!

Front suspension mount

Pay attention to the direction of the marked letters!

Marked 'F'!

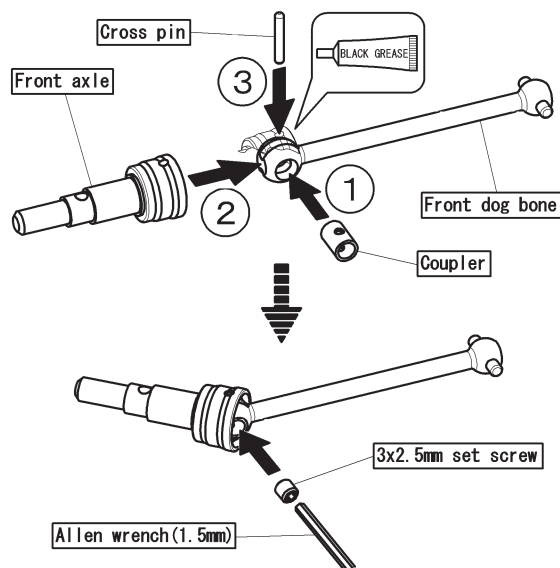
Pay attention to the direction of the part!

Front lower suspension arm

M3x12 FH TP screw

Install after the suspension mount has been attached!

Front Universal Driveshaft Assembly



Slide the dog bone into the outdrive, position the arm and insert the suspension arm pin into the mount. Also pay close attention to the placement of the spacers.

Attach the upper camber link and tie-rod to the ball studs. (Repeat on the opposite side.)

[List of Parts Used]

3x12mm FH TP screw --x2

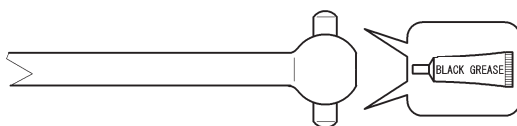
Lower suspension arm spacer (4mm) --x2

Rear dog bone --x2

Inner suspension arm pin --x2

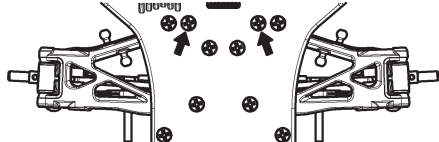
Rear suspension mount --x1

【Read before assembly!】



Apply (black grease) to the front and rear dog bone pins.

【Confirm after installation!】



After the suspension arms have been installed, check to see that the suspension arms move freely. If the suspension arms do not move freely, check the suspension mount screws to see if they are overtightened. Overtightening the suspension mount screws may cause the suspension hinge pins distort. During assembly, check the movement of each arm and loosen the screws as necessary. If loosening the screws does not seem to work, remove the indicated screws as shown on the right. (Removing the indicated screws will not affect the handling characteristics of the chassis. Follow these instructions for the front also.)

Important!

- ① Always apply black grease to the rear dog bone pins. (Black grease sold separately.)
- ② The rear suspension arms assembled in the previous step are different left and right. Follow the diagram closely during assembly.

12 Rear Lower Suspension Arm Installation

Attach after the Suspension Mounts have been installed.

Rear dog bone

Rear lower suspension arm

Pay attention to the direction of the part!

Lower suspension arm spacer, thin (4mm)

Inner suspension arm pin

M3x12 FH TP screw

Install after the suspension mount has been attached!

Rear suspension mount

Pay attention to the direction of the marked letters!

Marked 'R0+2'!

M3x12 FH TP screw

Install after the suspension mount has been attached!

Attach after the Suspension Mounts have been installed.

Rear dog bone

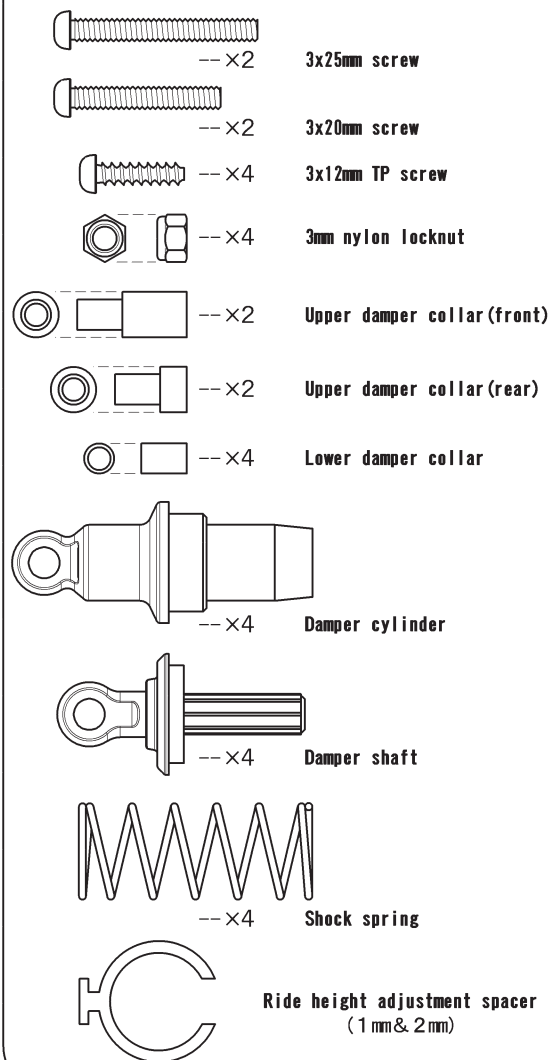
Rear lower suspension arm

Pay attention to the direction of the part!

Slide the dog bone into the outdrive, position the arm and insert the suspension arm pin into the mount. Also pay close attention to the placement of the spacers.

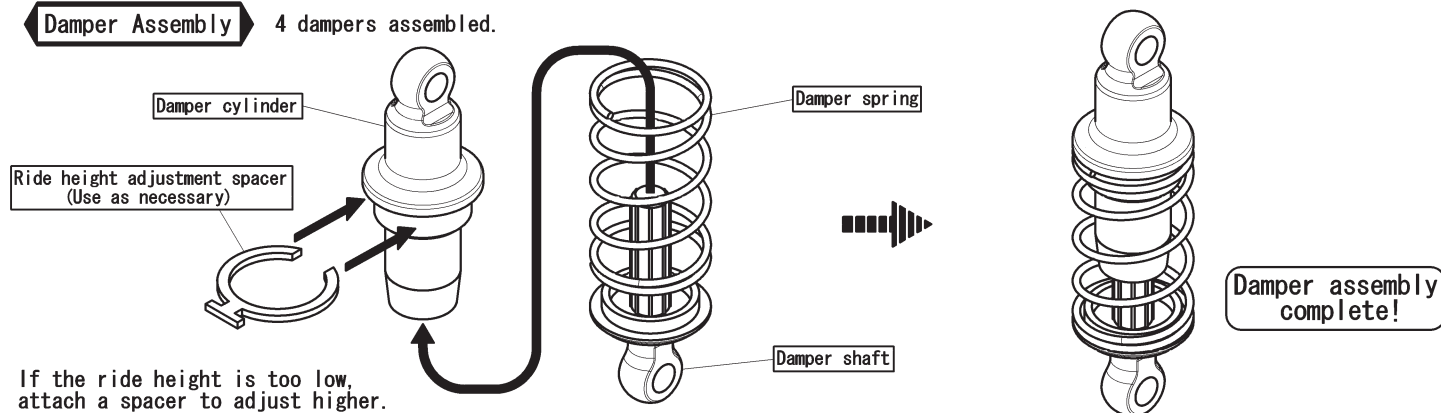
Attach the upper camber link to the ball stud. (Repeat on the opposite side.)

[List of Parts Used]

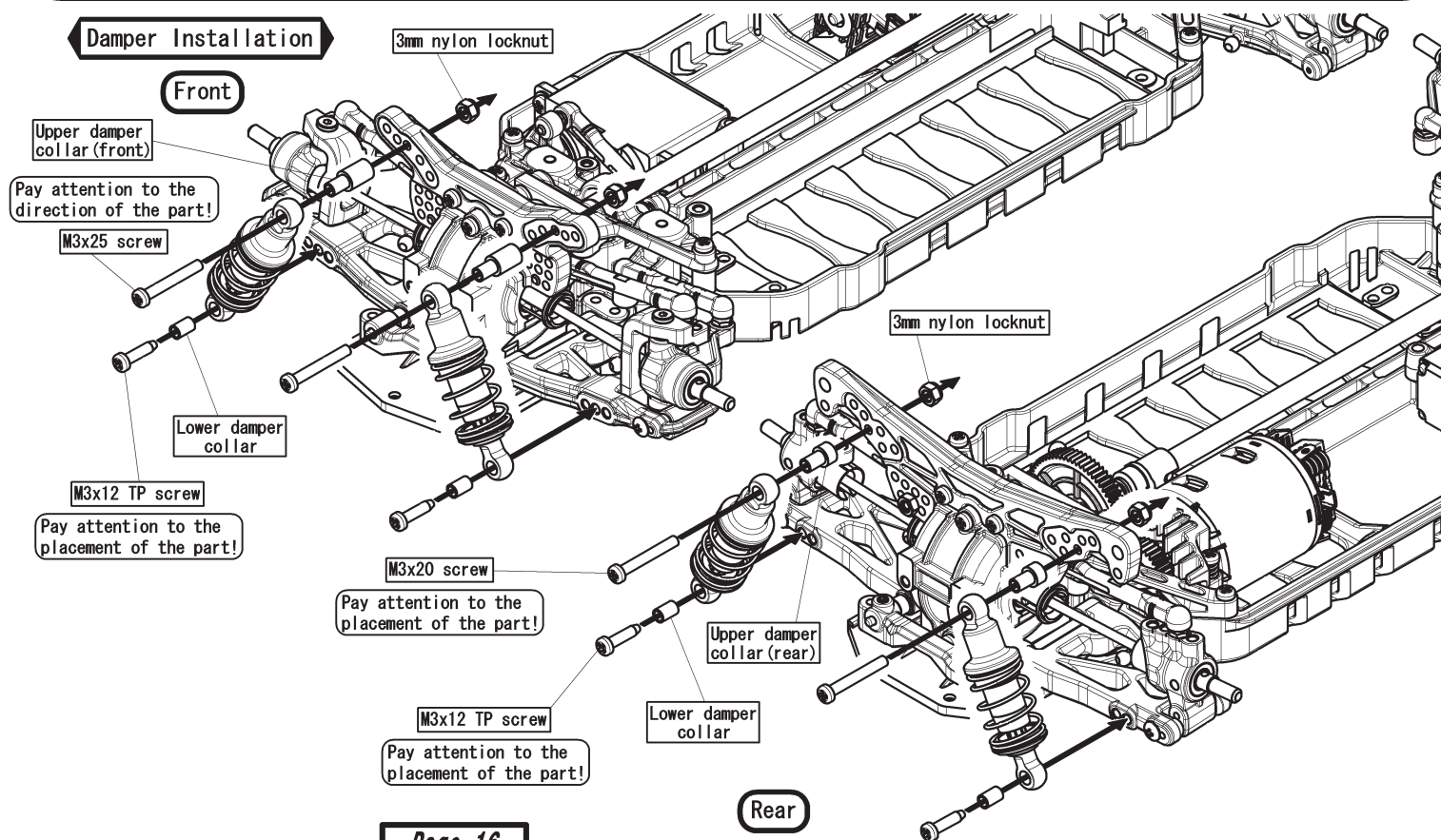


13 Front and Rear Damper Installation

Damper Assembly 4 dampers assembled.

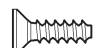


Damper Installation



Important!— When installing the dampers to the shock towers and lower suspension arms, make sure that they are installed in the correct location.

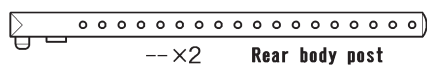
[List of Parts Used]

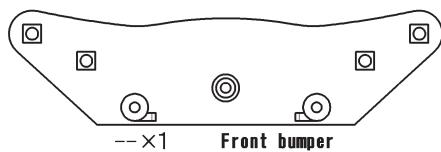
 --x4 3x10mm FH TP screw

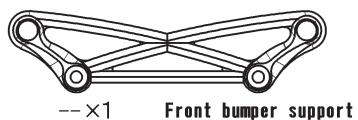
 --x3 3x12mm FH TP screw

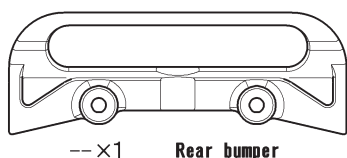
 --x2 3x10mm TP screw

 --x2 Front body post

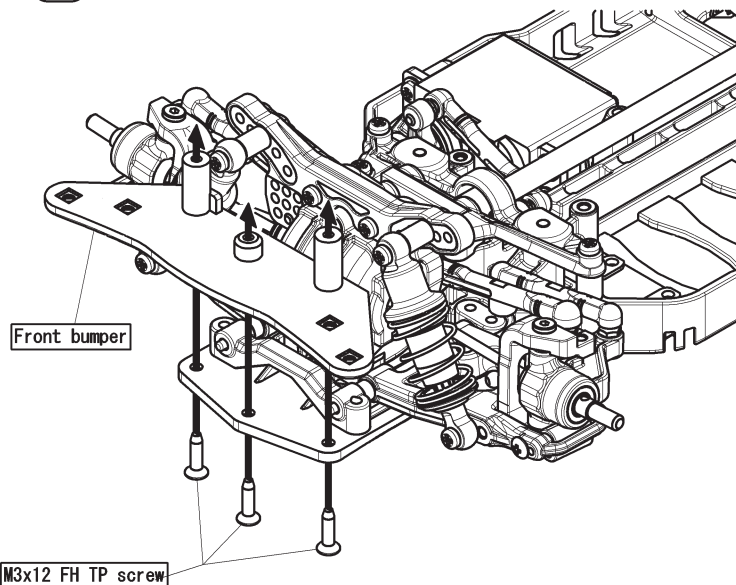
 --x2 Rear body post

 --x1 Front bumper

 --x1 Front bumper support

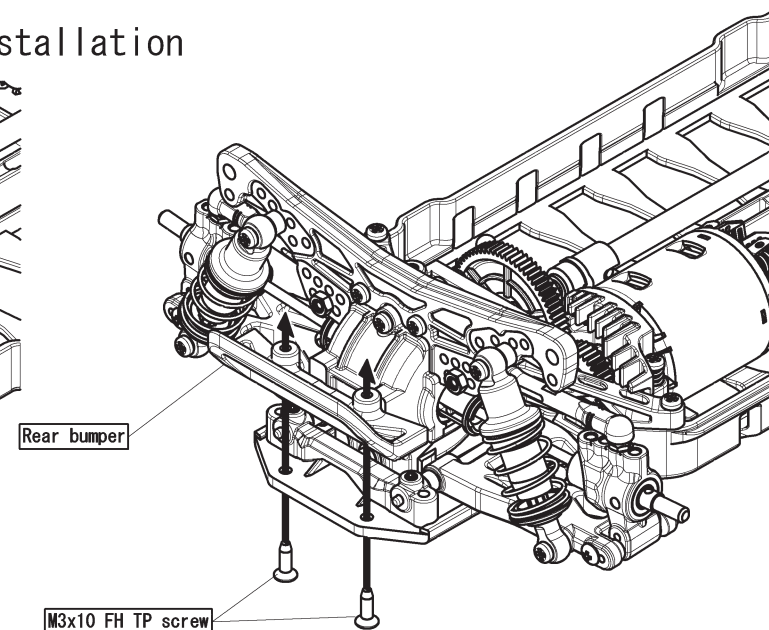
 --x1 Rear bumper

14 Front & Rear Bumper, Body Post Installation



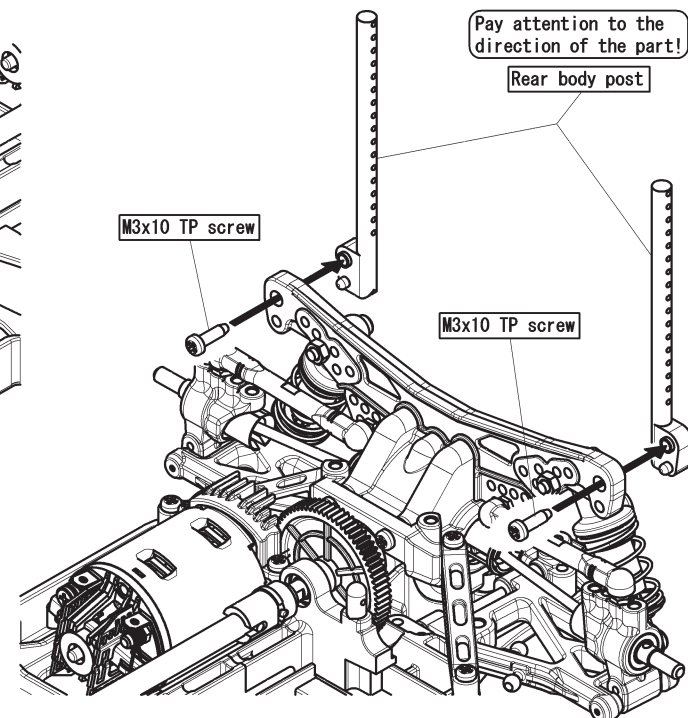
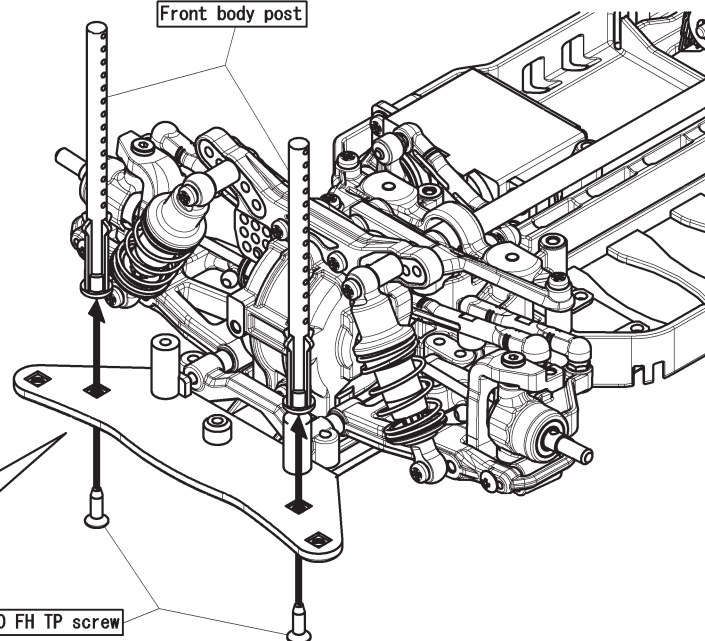
Pay attention to the direction of the part!

Front body post



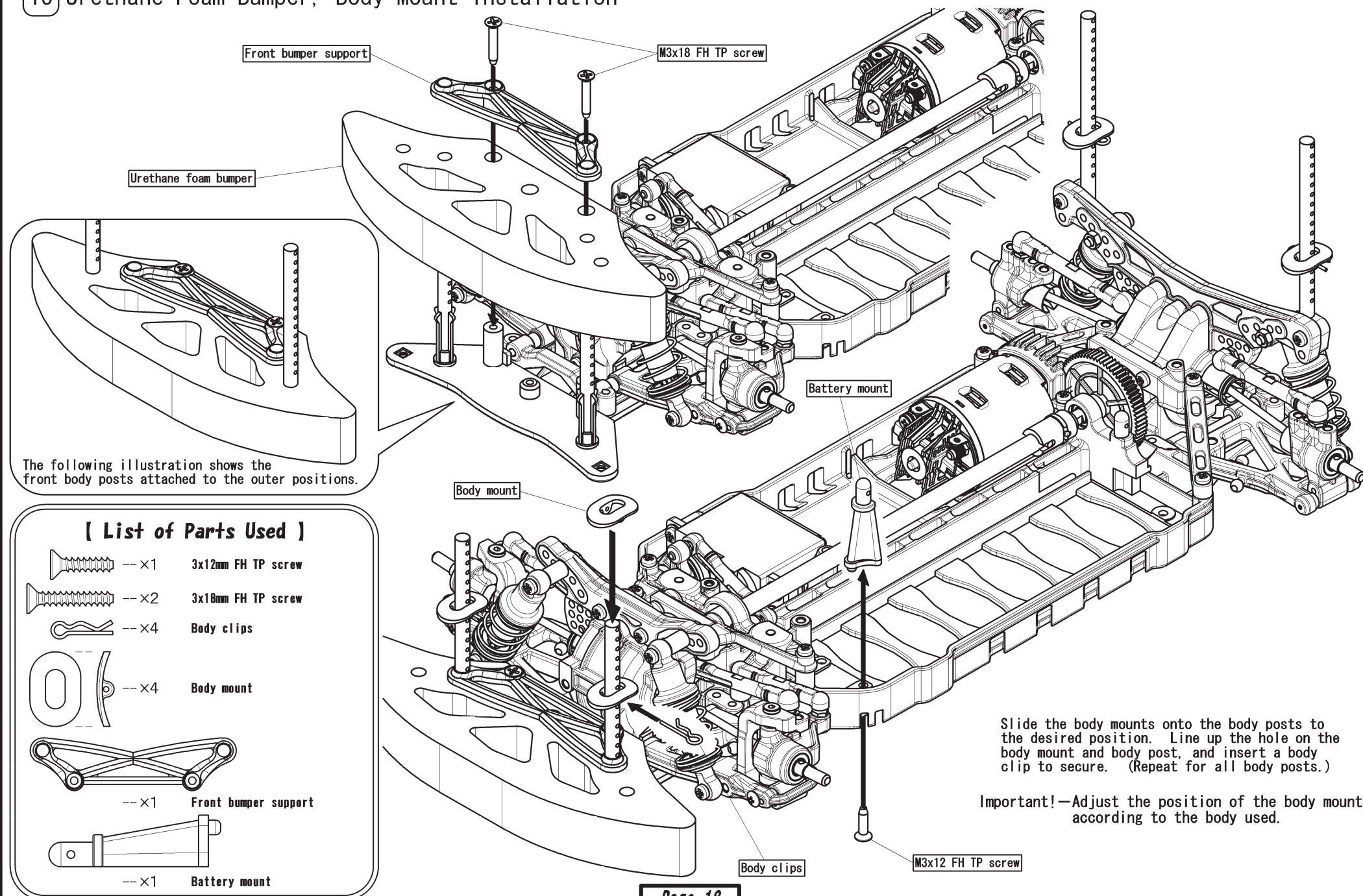
Pay attention to the direction of the part!

Rear body post

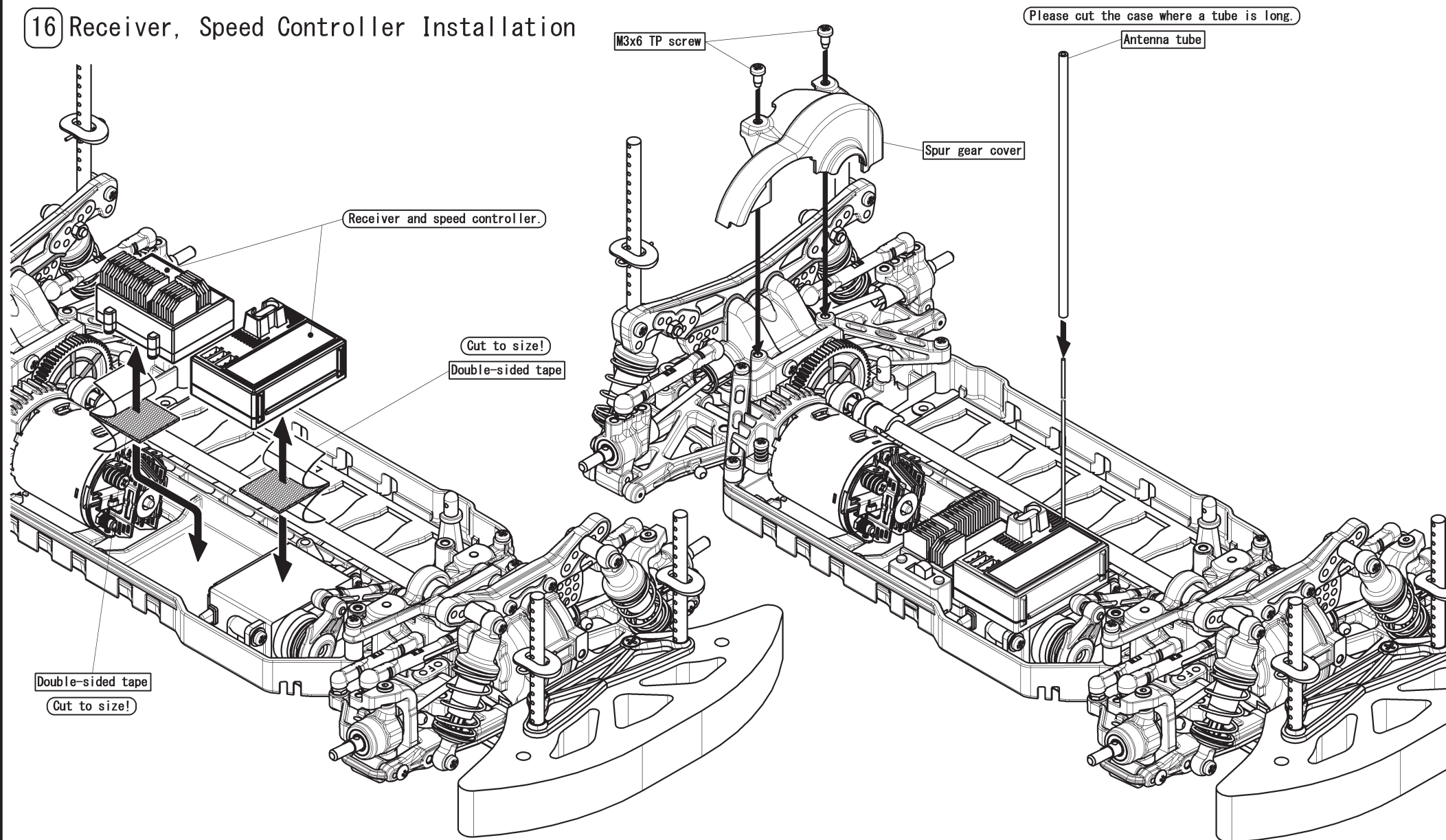


Important!
The front body post mounting location will vary depending on the body used. Confirm the correct mounting location by reading the instruction manual included with the body.

15 Urethane Foam Bumper, Body Mount Installation



16 Receiver, Speed Controller Installation



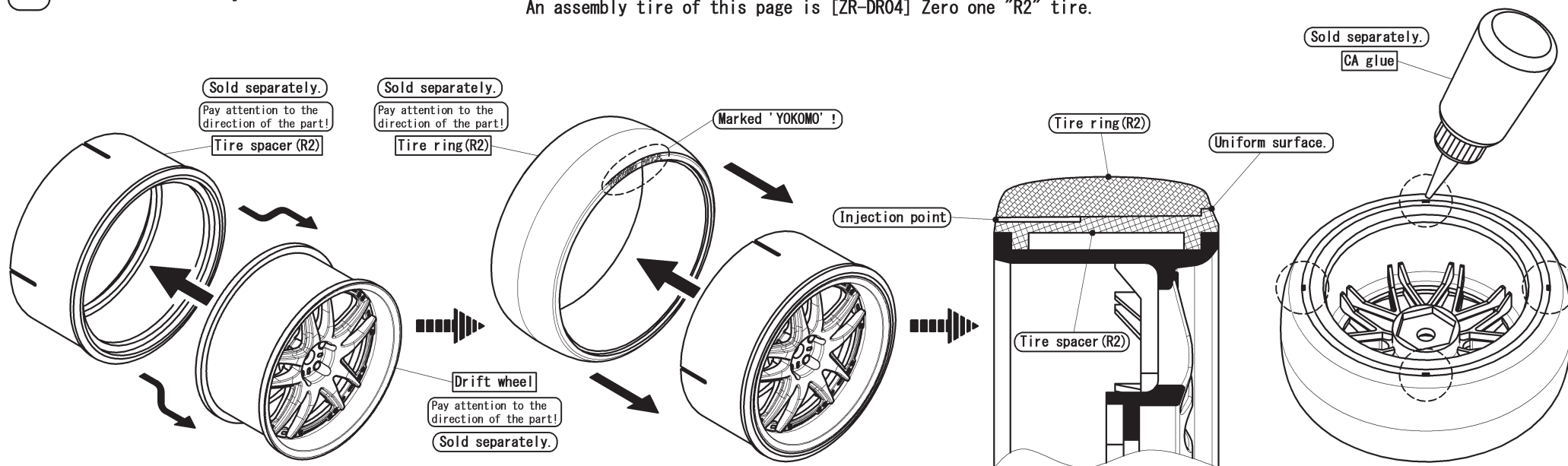
Important!① Secure the receiver and speed controller to the chassis using double-sided tape.
(Cleaning the surface with motor spray will ensure better adhesion.)

Slide the antenna wire through the bottom of the antenna mount and insert into the antenna tube. Leave about 1cm of wire at the top of the tube.
Insert the antenna tube into the antenna mount.

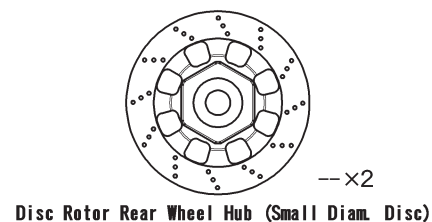
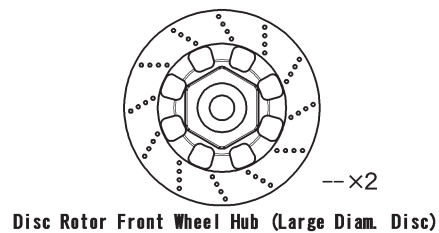
Important!② Make sure to bundle any remaining antenna wire so that it does not interfere with the drivetrain.

17 Tire Assembly

Assemble 4 sets. Important!— Drift wheel and drift tire not included. Please purchase separately.
An assembly tire of this page is [ZR-DR04] Zero one "R2" tire.



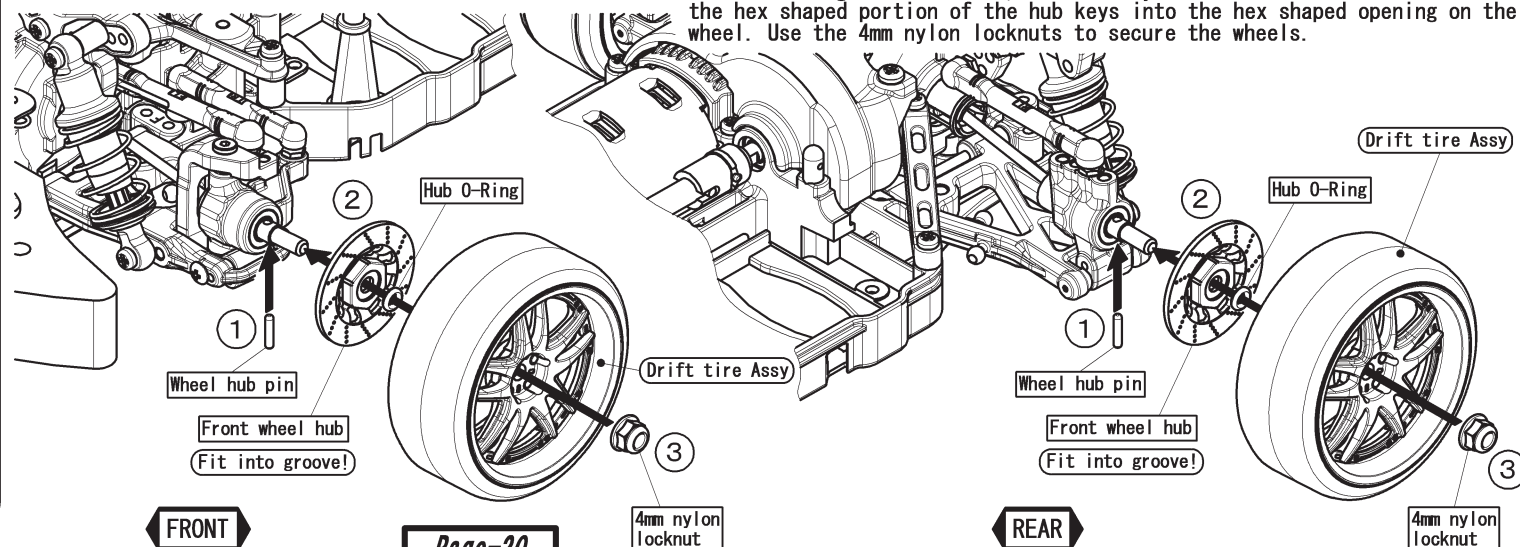
[List of Parts Used]



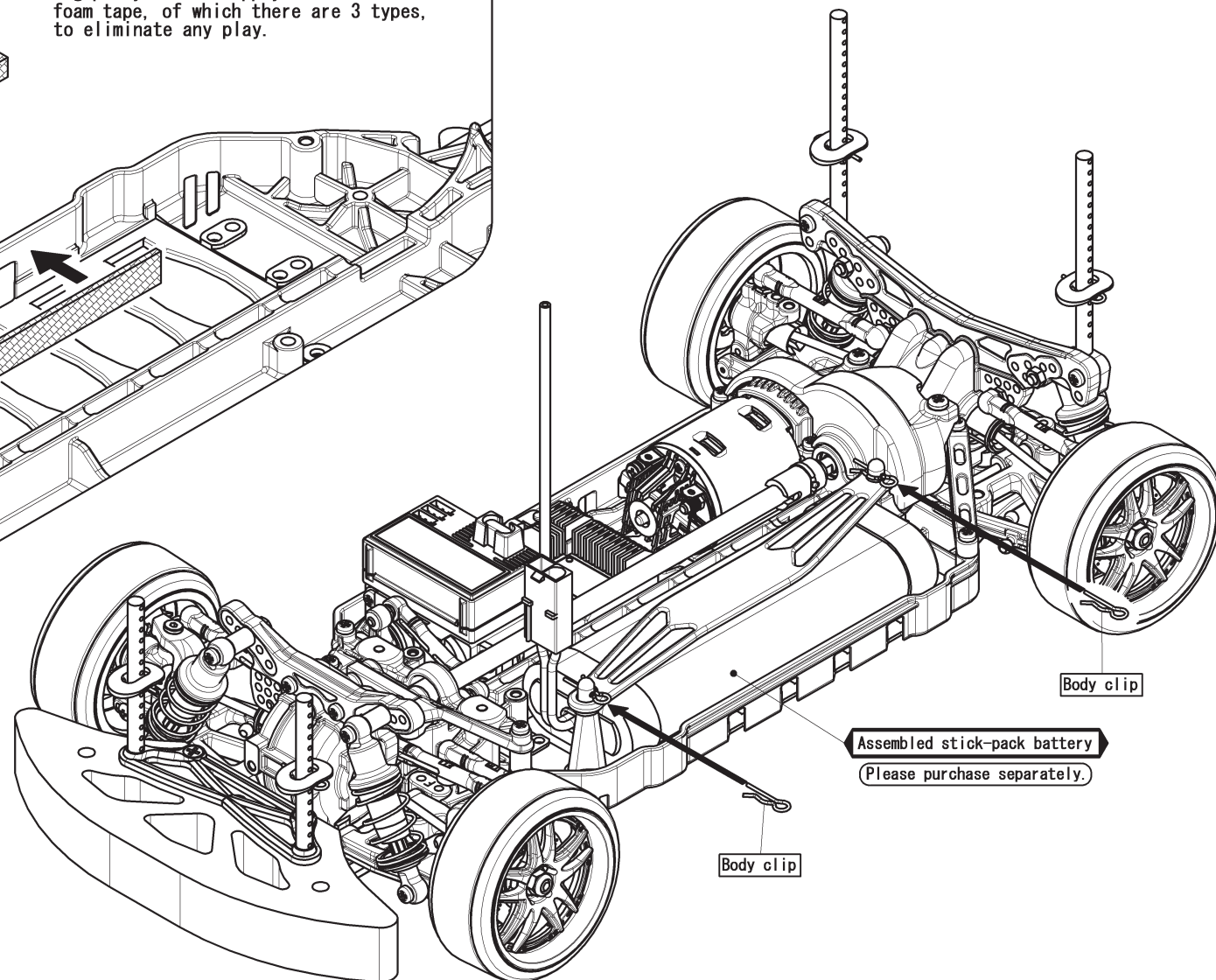
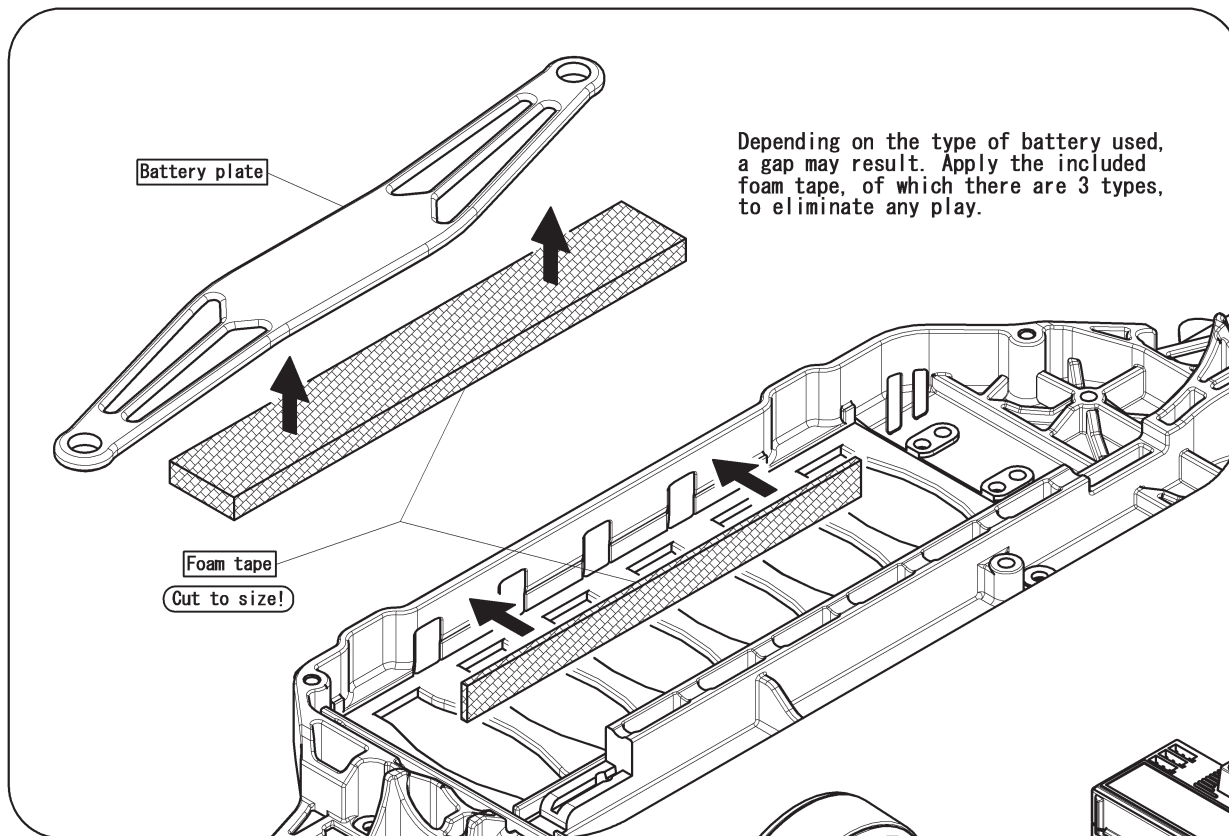
18 Wheel Hub, Tire Installation

[Repeat on both sidea.]

Insert the wheel hub pin into both front and rear axles. Attach the wheel hub onto the axles so that the pin fits into the groove in the hub. Slide the hub o-ring onto the axle, followed by the wheel hub. Make sure that the hex shaped portion of the hub keys into the hex shaped opening on the wheel. Use the 4mm nylon locknuts to secure the wheels.

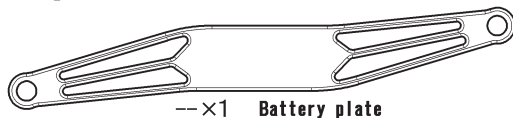


19 Battery Mounting



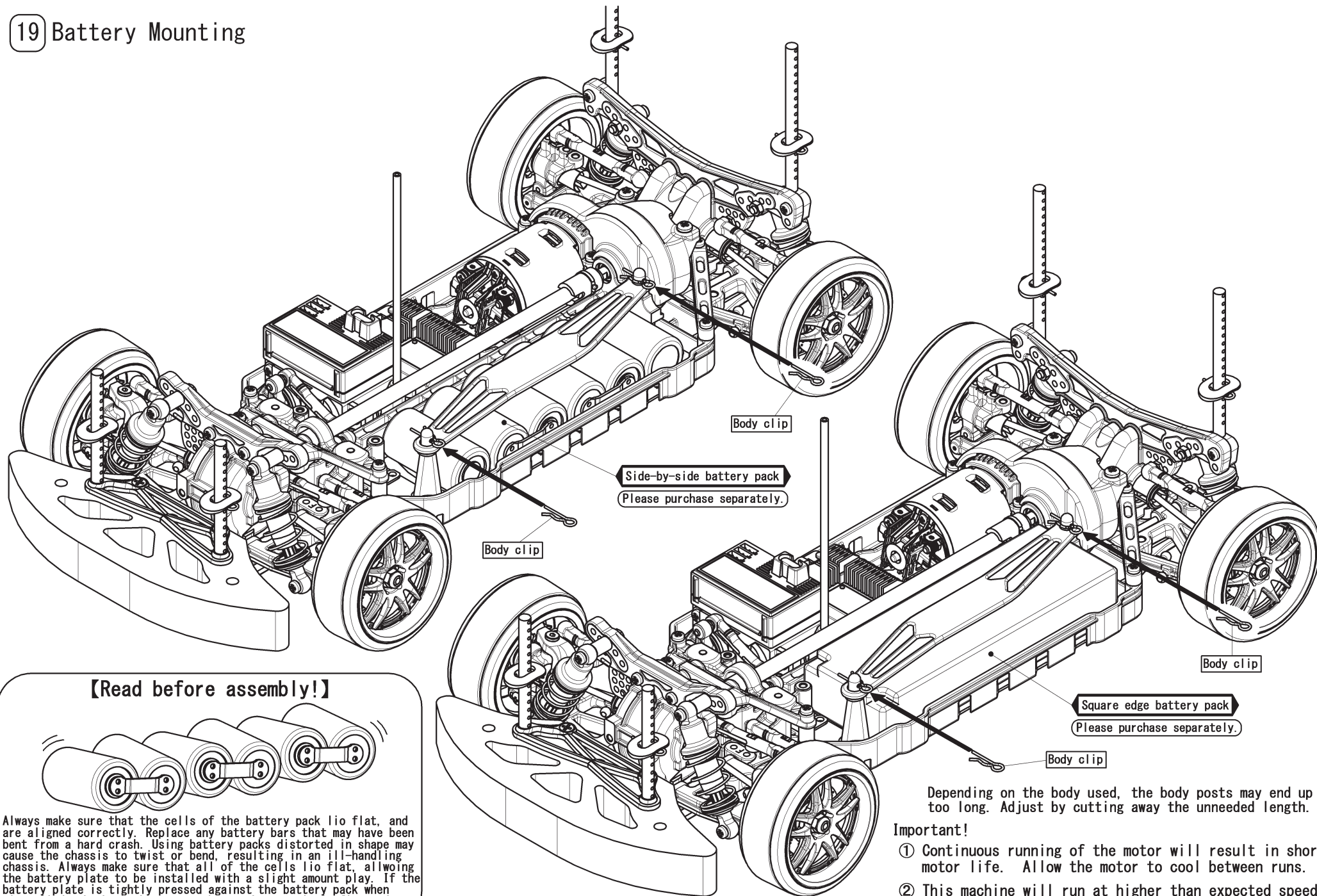
[List of Parts Used]

---x2 Body clips



Also included: foam tape x 3 ea.

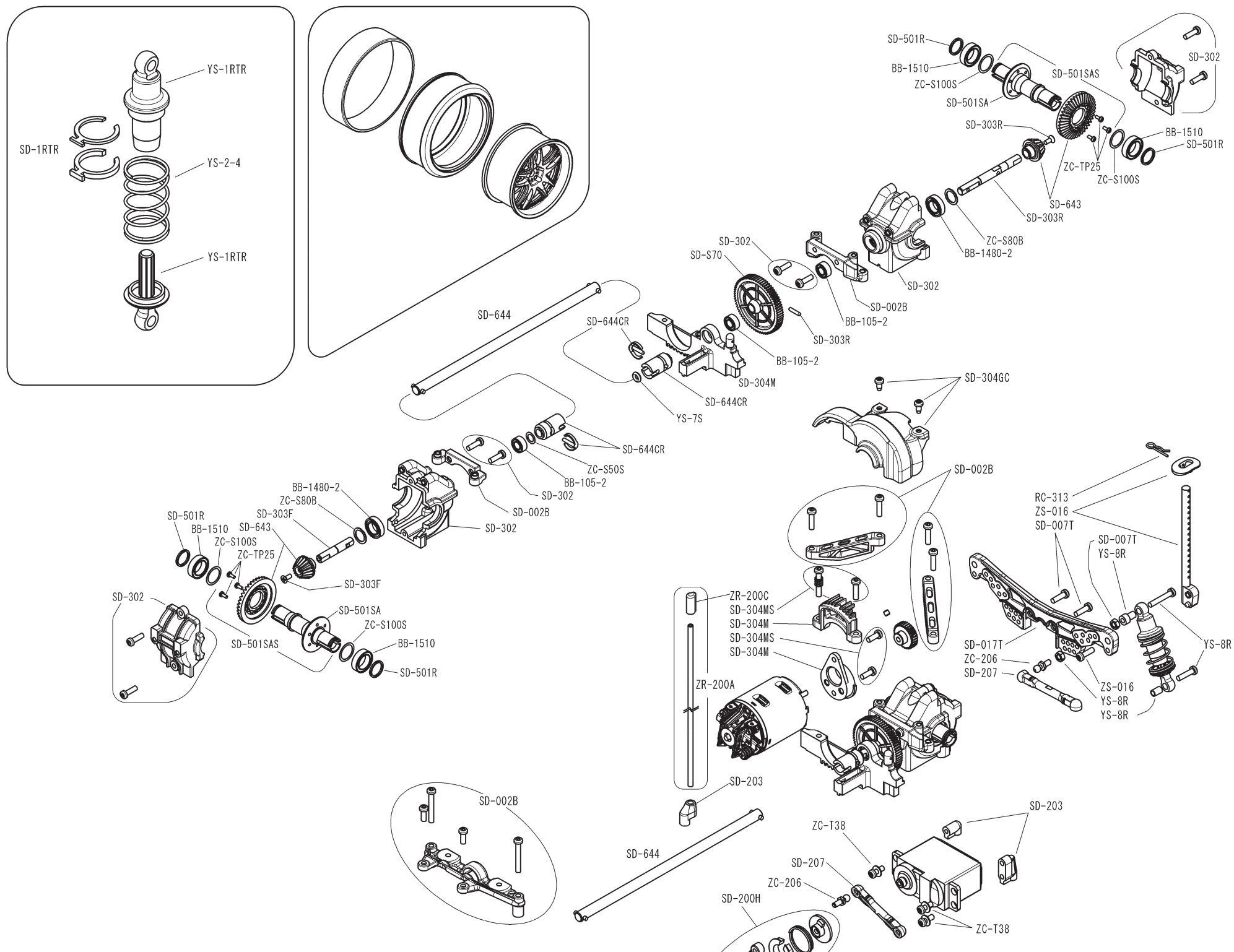
19

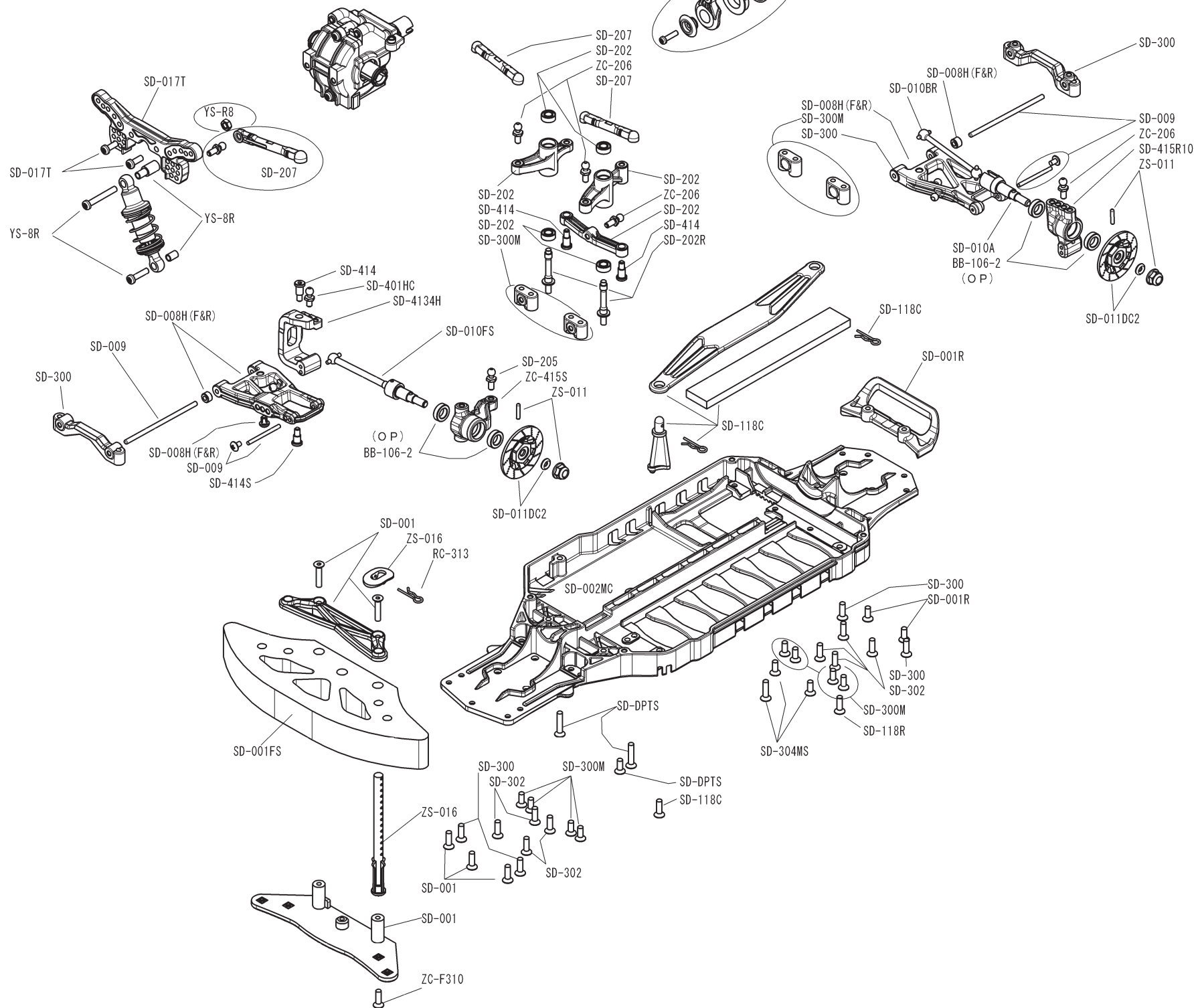


Depending on the body used, the body posts may end up too long. Adjust by cutting away the unneeded length.

Important!

- ① Continuous running of the motor will result in shorter motor life. Allow the motor to cool between runs.
- ② This machine will run at higher than expected speeds, so please exercise caution when running. Choose open, safe areas to run. Enjoy!





MEMO

[illegible]

AS A MANUFACTURER OF WORLD CHAMPIONSHIP WINNING CARS,
YOKOMO WILL CONTINUE TO PROVIDE THE BEST AVAILABLE TECHNOLOGY TO R/C ENTHUSIASTS ALL OVER THE WORLD.
ENJOY THIS PRODUCT KNOWING THAT YOU ARE DRIVING ONE OF THE BEST HANDLING R/C CARS EVER DESIGNED.



世界のブランド YOKOMO

ヨコモは競技用 R/C カー（ラジオコントロールカー）の専門メーカーです。その製品は、全日本選手権、全米選手権、ヨーロッパ選手権、そして R/C カーレースの最高峰である世界選手権レースでも優勝。世界の R/C カーマニアに愛用されています。