



SP

S P O R T

1/10 SCALE EP TOURING CAR CHASSIS KIT

この度はヨコモ製R/Cカーキットをお買い求め頂き、誠に有り難うございます。このキットは、ワールドチャンピオン メーカーであるヨコモの高性能・競技用R/Cカーです。
本説明書に従った正しい組立・安全な走行をして頂ければ、誰でも手軽に楽しむことができます。

Thank you for purchasing this Yokomo product. This high performance competition kit has been proudly manufactured by Yokomo - World Champion R/C car manufacturer.
Proper assembly of this product will provide fun, safe enjoyment.

R/C カーを安全に楽しんで頂くための 注意事項

お子様(中学生以下)が 組立・走行する際は、必ず保護者の方が付き添い 安全を確認して下さい。

組立の注意

- 幼児のいる場所では組み立てないで下さい。小さな部品を飲み込む等、非常に危険です。
- 組立の前に必ず内容をお確かめ下さい。万一不良部品、不足部品などがあった場合は、ヨコモ アフターサービス部までお問い合わせ下さい。
- 組立の前に説明書を最後まで読み、全体の流れをつかむと効率的な組立が出来ます。
- 組み立てる際は、様々な工具が必要になります。安全の為に必ず作業内容に合った工具を使用して下さい。又、カッターナイフ等を使用する際は危険を伴いますので、注意して下さい。
- 部品には様々な素材を使用しています。切削加工された金属パーツ等はエッジが鋭く、慎重な組立が必要となります。ケガをしないように注意して下さい。
- プラスチックパーツなどを切断する際は、切断した部品が飛び危険があるので注意して下さい。
- 回転部や駆動部は出来るだけスムーズに動作するように組み立てて下さい。
- 配線やコード類はきれいにまとめて下さい。回転部分や走行路面にコードが接触すると危険です。又、配線は確実に接続されていないとショートなどの恐れや、性能を十分に発揮出来ない場合があります。
- 必要以上の分解、改造をすると、安全性が低下したり走行性能が十分に発揮出来なくなる場合があります。
- 塗装は、周囲に火気の無いことを確認し、換気の良い場所で行って下さい。

走行の注意

- ヨコモ製R/Cカーは競技用の為、時速40kmを超える速いスピードが出るモデルもあります。ルールを守って安全な場所や、R/Cカー用サーキットで走らせて下さい。
- 公道等、周囲の人の迷惑になるような場所では絶対に走らせないで下さい。
- R/Cカーは電波を利用する為、何らかのトラブルで最悪の場合は暴走する事があります。狭い場所や室内は避け、出来るだけ広い、障害物のない場所で走らせて下さい。
- 周囲にR/Cカーを走らせている人がいる場合は、電波が重ならないように、周波数を確認し合って、安全を確かめて下さい。
- R/Cカーは水を嫌います。雨の日や、水たまりのある場所で走らせると、R/Cメカが壊れたり、暴走する危険があります。
- R/Cカーの駆動部分、ギヤやベルト、タイヤなどは高回転で回ります。バッテリーを接続した後は危険ですので、回転部分に手を触れないで下さい。
- 走行後のR/Cカーは各部が高温になる事があります。危険ですので冷却期間をおいてから、メンテナンスなどをして下さい。

走らせる手順

- ①タイヤが空転するように、台の上にR/Cカーを置きます。
- ②スピードコントローラのスイッチがOFFになっている事を確認してから、モーターとバッテリーを接続します。
- ③送信機のアンテナを伸ばし、スイッチをONにします。(送信機の電圧が下がっていると危険です。常に電圧の高い状態で使用して下さい。)
- ④受信機のスイッチをONにします。

走行終了手順

- ①スピードコントローラのスイッチをOFFにします。
- ②バッテリーの接続を外します。
- ③送信機のスイッチをOFFにし、アンテナを縮めます。

バッテリーの取り扱い

(バッテリーに付属の説明書に基づき使用して下さい。)

- バッテリーを充電する際は、周囲に燃えやすい物のない安全な場所で行って下さい。又、高温な場所での充電も避けて下さい。
- バッテリーの充電中は充電状況を常に確認して下さい。充電器の誤動作などで過充電すると、最悪の場合は発火する危険性があります。バッテリー温度が50度を越えたら充電を中止して下さい。
- 走行後のバッテリーは高い温度になります。連続使用するとバッテリーを傷める事になりますので、冷却期間を置いてから充電して下さい。又、走行後のバッテリーはコンディション放電する事によって、性能を持続させる事が出来ます。
- 不要になったバッテリーは一般のゴミと一緒に捨てず、お手数でも電池専用の回収箱に捨てて下さい。

モーターの取り扱い

(モーターに付属の説明書に基づき使用して下さい。)

- 7.2Vのバッテリーでモーターのから回しをすると危険です。モーター内部を破損し部品が飛び出す事も考えられますので、もしモーターのブレークインをする時は、モーターをしっかり固定し3~5V程度でから回して下さい。
- モーターは定期的なメンテナンスが必要です。劣化するとスピードが出なくなったり、走行時間が短くなります。定期的にクリーニングしたり、ブラシが減ってきたら交換する等のメンテナンスをして下さい。
- モーターの性能に合ったギヤ比を選択して下さい。ギヤ比が最適でないとモーターの性能を十分に発揮出来ないだけでなく、他のR/Cメカを壊す原因にもなります。
- 走行後のモーターは非常に高い温度になります。連続走行するとモーターを傷める事になりますので、冷却期間を置いてから走行して下さい。

PRECAUTIONS FOR SAFE ENJOYMENT OF YOUR R/C CAR

For children under the age of 13, parental guidance is recommended when running.

ASSEMBLY PRECAUTIONS

- Do not assemble around small children. The parts can be dangerous if accidentally swallowed.
- Check the contents carefully before assembly. Please contact Customer Support if you happen to notice any defective or missing items.
- You will find the assembly process much easier by carefully reading through the manual, and familiarizing yourself with the instructions.
- Many different tools are required during assembly. For safety purposes, please use suitable tools. Exercise extra caution when using a sharp tool such as a hobby knife.
- Many different materials are used for the parts. Use extra care when handling parts with sharp edges, such as machined metal parts.
- When cutting plastic parts, watch for any flying parts.
- Try to assemble any rotating parts or drivetrain parts as smooth as possible.
- Bundle wires neatly away from the ground or any moving drivetrain components. Make sure that all wires are properly connected to prevent shorting.
- Unnecessary modifications may be unsafe and hinder performance.
- Always paint in a well ventilated area away from flames.

PRECAUTIONS BEFORE RUNNING

- Yokomo R/C cars are built for competition use, and some models may exceed speeds of 40km per hour. Practice common sense and run the car in open safe places, or R/C car tracks.
- Do not run the car on public roads with high amounts of traffic, or in areas that may cause an inconvenience to people in that area.
- R/C cars are controlled using a radio frequency. In a worst-case scenario, radio interferences may cause loss of control.
- If others near you are running R/C cars, confirm that they are not running on the same frequency.
- R/C cars do not like water. Avoid running on rainy days, or areas with water puddles. Exposure of the electronics to water may cause loss of control or damage to the electronics.
- The drivetrain of an R/C car consists of many moving parts like gears, belts, shafts, and tires. Avoid touching these areas when the battery is connected.
- Many parts of an R/C car will become hot after running. Allow the parts to sufficiently cool before conducting any maintenance.

BEGINNING A RUN

- ①Place the R/C car on a stand so the wheels are off the ground.
- ②Confirm that the speed controller switch is OFF, and connect the motor and battery.
- ③Extend the transmitter antenna and turn the switch ON. (It is unsafe to use a transmitter with low voltage. Make sure that the transmitter batteries are good before running.)
- ④Turn the speed controller switch ON.

FINISHING A RUN

- ①Turn the speed controller switch OFF.
- ②Disconnect the battery.
- ③Turn the transmitter switch OFF, and retract the antenna.

BATTERY USAGE

(Carefully read the instruction included with the batteries.)

- When charging batteries, make sure that the surrounding area is void of anything highly flammable. Also avoid charging in high-temperature locations.
- When charging batteries, frequently monitor the charging it catch on fire. If the battery reaches 50 degrees Celcius or more, stop charging.
- Batteries will become hot after running. Continuous use of the battery pack may result in damage to the cells. Allow the battery too cool down before re-charging. Using a battery conditioner after running may prolong the life and performance of the battery.
- Please do not discard old battery packs in the trash. Although inconvenient, please locate a battery disposal center.

MOTOR USAGE

(Carefully read the instruction included with the motor.)

- Connecting a 7.2V battery directly to the motor can be very dangerous. This may cause the internal parts of the motor to break apart, causing some parts to fly out of the motor. To break-in the motor, safely secure the motor and run the motor at about 3-5V.
- Motors require periodic maintenance. Slower speeds and decreased run times may indicate a worn-out motor. Periodically clean the motor and change the brushes when needed.
- Choose a gear ratio that matches the power characteristics of the motor. Using a gear ratio unsuited to the characteristics of the motor will not only prevent the motor from performing at its optimum, but may even cause damage to the other electronics.
- Motors will generally become very hot after running. Continuous running will reduce the life of the motor. Allow the motor to sufficiently cool between each run.

【組み立てに必要な物】

ACCESSORIES AND TOOLS NEEDED FOR [SD SPORT TOURING] ASSEMBLY

■ 走行の為に別にお買い求め頂く物 ■

ADDITIONAL ITEMS REQUIRED FOR USE (NOT INCLUDED IN KIT)

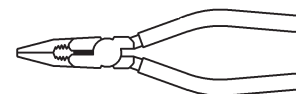
- 2チャンネルプロポ（1サーボ 1アンプ仕様）
**TWO CHANNEL R/C SURFACE RADIO SYSTEM
AND ELECTRONIC SPEED CONTROL**
- 走行用7.2V バッテリーパック
7.2V BATTERY PACK
- 走行用バッテリー充電器
BATTERY CHARGER
- 走行用モーター
MOTOR
- タイヤ(タイヤ付キットは不要)
TIRES
- 走行用ボディー(ボディー付キットは不要)
BODY
- ボディー塗装用カラー
BODY SPRAY PAINT

■ 別途用意する工具 ■

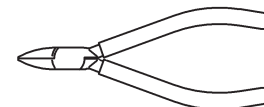
ASSEMBLING TOOLS REQUIRED (NOT INCLUDED IN KIT)



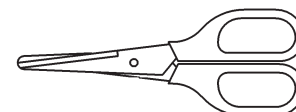
ドライバー（大,小）
SCREW DRIVER (SMALL & LARGE)



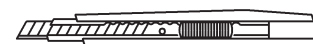
ラジオペンチ
NEEDLE NOSE PLIERS



ニッパー
SIDE CUTTER



ハサミ
SCISSORS



カッター
HOBBY KNIFE

■ キットに入っている工具 ■

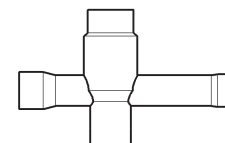
TOOLS (INCLUDED)



六角レンチ
ALLEN WRENCH
(1.5mm & 2.0mm)



ターンバックルレンチ
TURNBUCLE WRENCH



十字レンチ
NUT WRENCH

**[SD SPORT TOURING]の性能を十分に発揮させる為に
イラストを良く参照し説明の順番に従って確実に組み上げて下さい。**

**For assembly, follow the figures and the instructions closely
so that your [SD SPORT TOURING] will perform at its best!!**

[Bag-1 Contents]

 --x8 3x12mm FH TP screw

 --x2 Front suspension mount

 --x2 Rear suspension mount

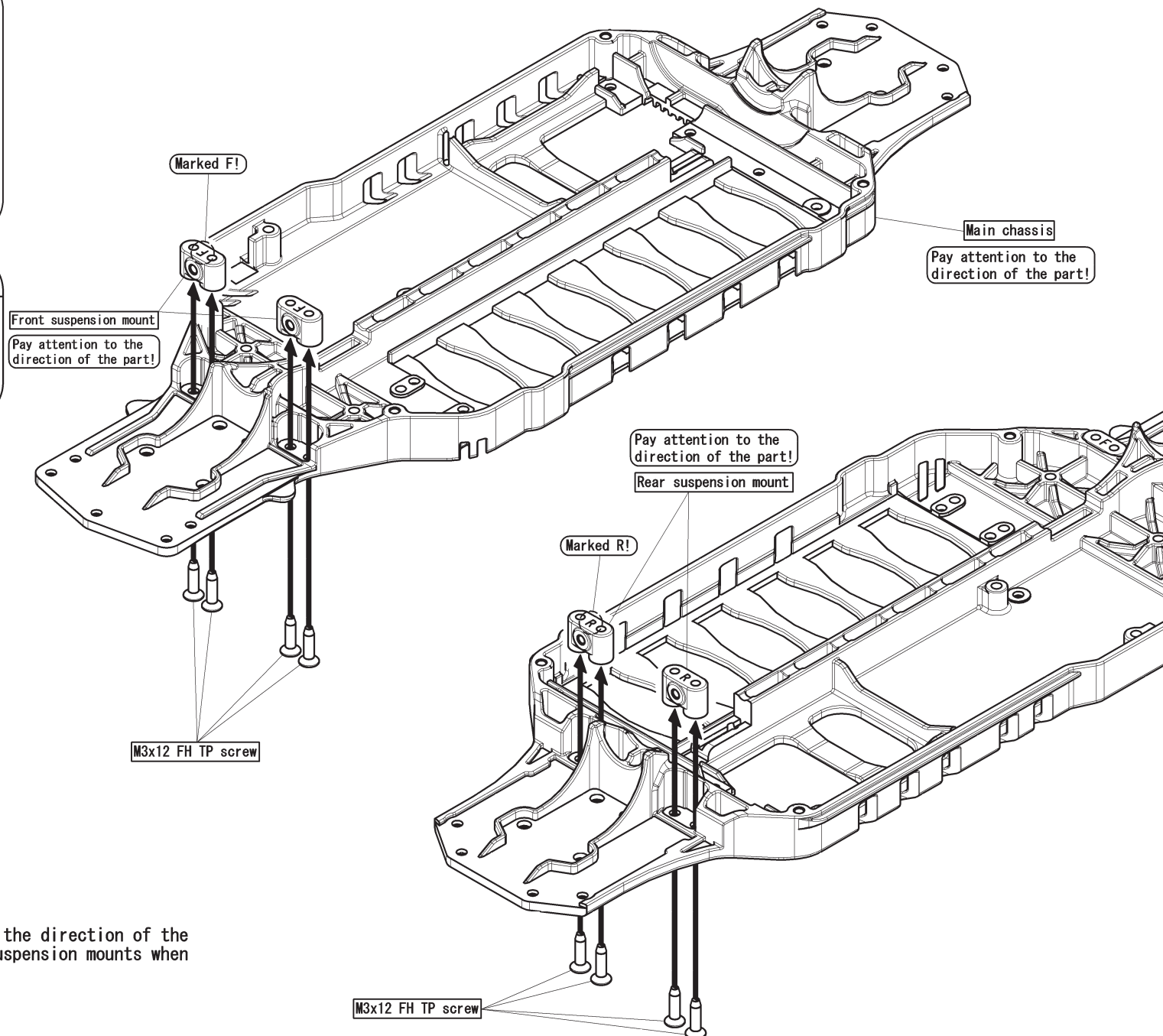
【Read before assembly!】

The screws included in this kit have 2 different types of thread. Pay special attention to where the screws are used.

※Tapping screws cannot be used on metal parts.

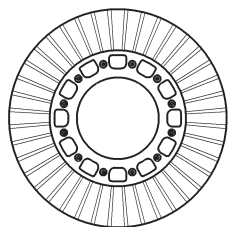
 Tapping Screw
(Wider thread)

 Screw (Coarse pitch)
(Tighter thread)

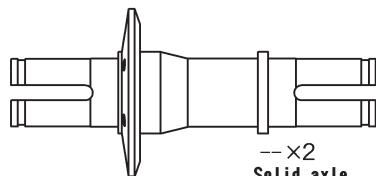


Important!— Pay attention to the direction of the front and rear suspension mounts when installing.

[Bag-2 Contents]



--x1 Ring gear



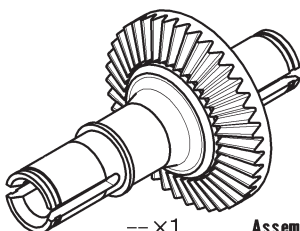
--x2 Solid axle
(1 replacement spares included)



--x4 Diff outdrive ring



--x3 2x5mm TP screw



--x1 Assembled ball differential

The front and rear ball differentials included in the kit come pre-assembled, but may require some adjustments. Please read [Ball Differential Assembly] on the following page to become familiar with how the ball differential works. When replacing parts or disassembling the differential for maintenance, [Diff Lube GS-SDL] and [Black Grease GS-SBG] are required in addition to the parts listed above. (Handling performance will be affected when the action of the ball differential becomes rough, so periodic maintenance is recommended.)



--x4 10x13mm shim



--x4 10x15mm bearing

Solid Axle Assembly

Pay attention to the direction of the part!

Ring gear

Solid axle

Pay attention to the direction of the part!

10x15 bearing

M2x5 TP screw

Tighten evenly!

10x13 shim

10x13 shim

Snap onto the outdrive so that the ring fits into the groove.

Outdrive ring

10x15 bearing

Outdrive ring

Snap onto the outdrive so that the ring fits into the groove.

Ball Differential Assembly

Assembled ball differential

10x13 shim

10x15 bearing

10x13 shim

Snap onto the outdrive so that the ring fits into the groove.

Outdrive ring

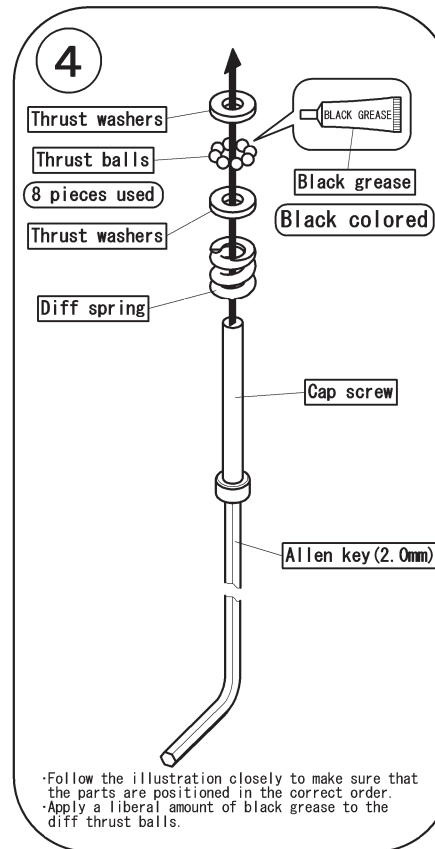
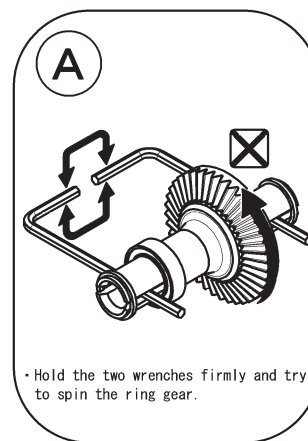
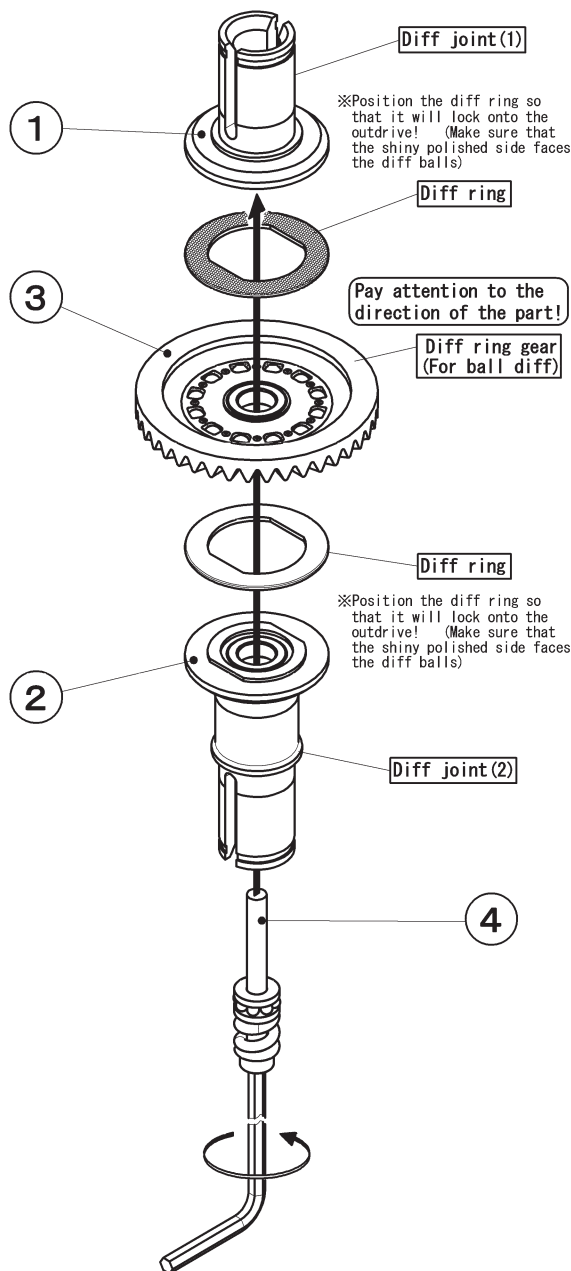
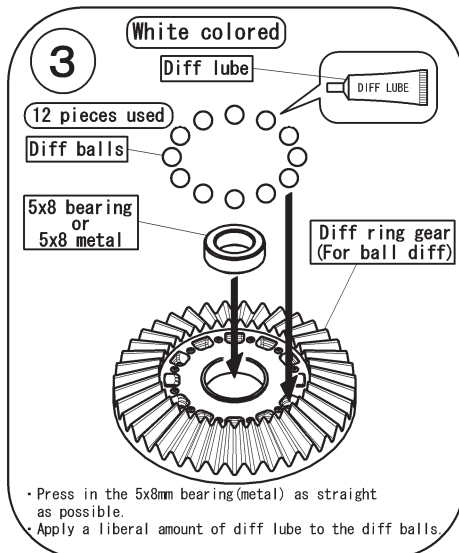
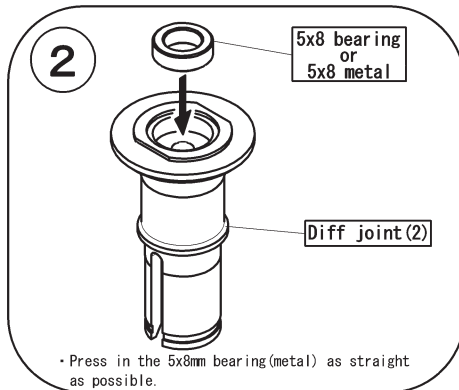
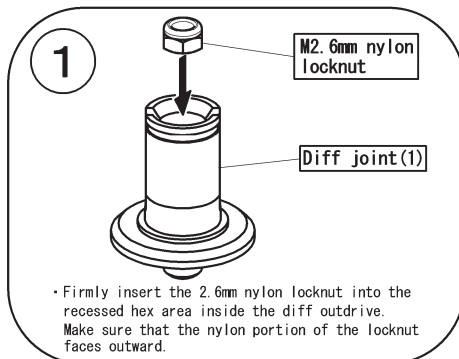
10x15 bearing

Outdrive ring

Snap onto the outdrive so that the ring fits into the groove.

Important!— When attaching the ring gear to the solid axle, make sure that the 2x5mm tapping screws are threaded properly into the holes, and tightened evenly.

Ball Diff Assembly ※Carefully read the following instructions prior to assembling the ball differential.

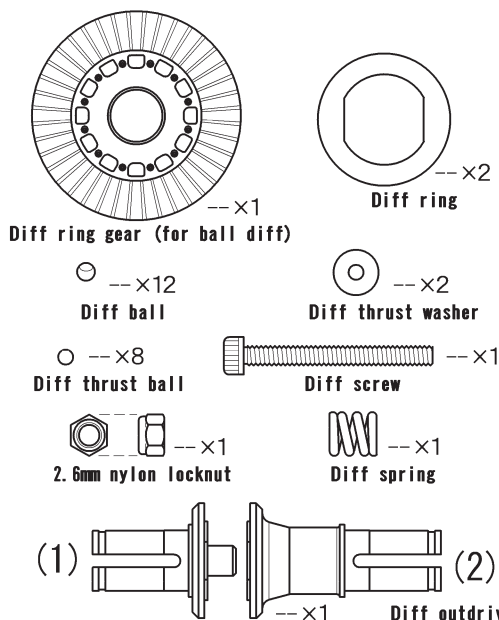


Important!

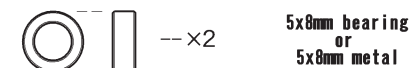
- ① The diff rings and diff balls are coated with oil to prevent rust during shipment. To help prevent the diffs from slipping, make sure to clean the diff rings and diff balls with motor spray prior to assembly.
- ② Be aware of the top and bottom sides of the diff rings. The top side of the diff ring is polished and faces the diff balls. The bottom side has a matte finish and faces the outdrive.
- ③ Always apply diff lube to the diff balls, and black grease to the diff thrust balls.
- ④ When tightening the diff, use two allen keys to test the tightness of the diff (as shown in illustration A). Slowly tighten the diff screw until the ring gear cannot be turned by hand. (Tighten the diff screw until the diff does not slip when the car is run.)

[Ball Diff Assembly Parts]

Parts needed for one ball diff.



Other transmission case and chassis brace parts



[Bag-3 Contents]

2.6x6mm flat head screw (w/threadlock applied) --x2

3x8mm flat head screw --x2

3x12mm flat head screw --x1

3x10mm FH TP screw --x4

3x12mm TP screw --x8

3x12mm TP screw

Hub pin --x1

O-ring --x1

Front input shaft --x1

Rear input shaft --x1

Drive gear --x2

Center drive cup --x2

Drive cup clip --x2

Spur gear --x1

Motor mount --x1

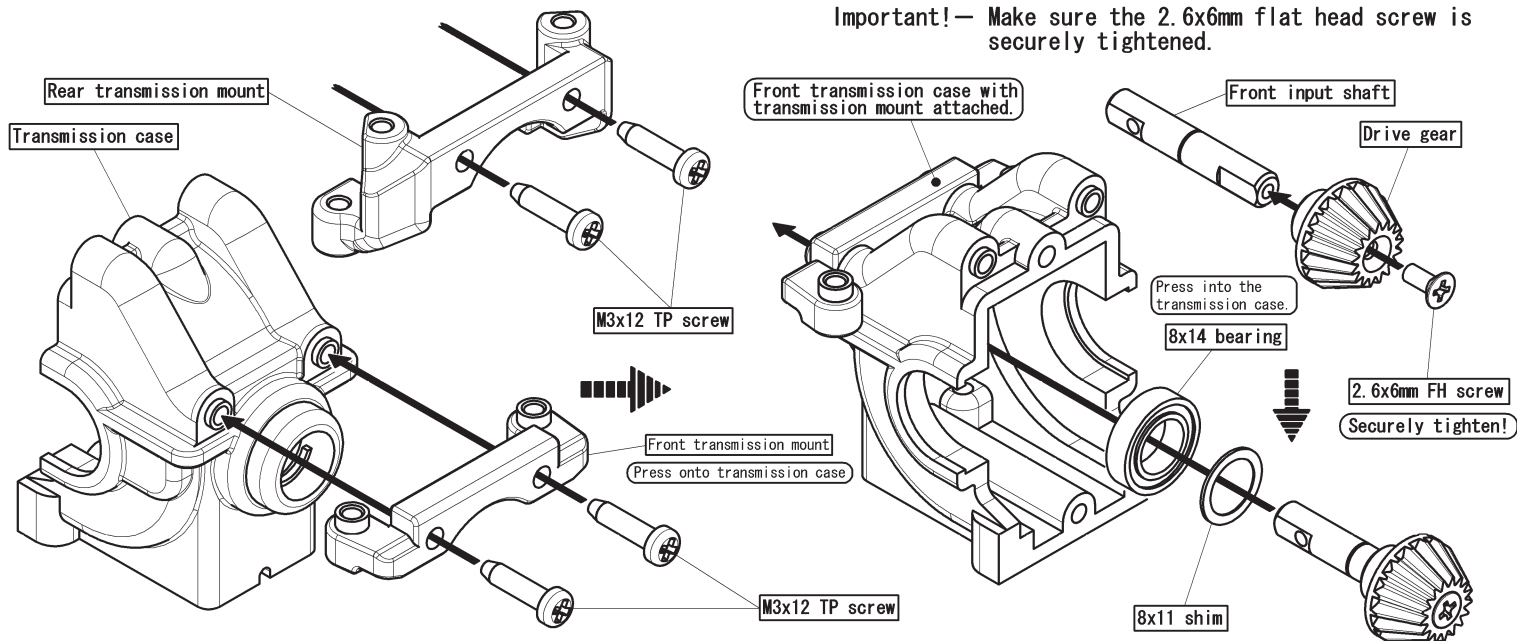
Other transmission case and chassis brace parts

5x8mm shim --x1

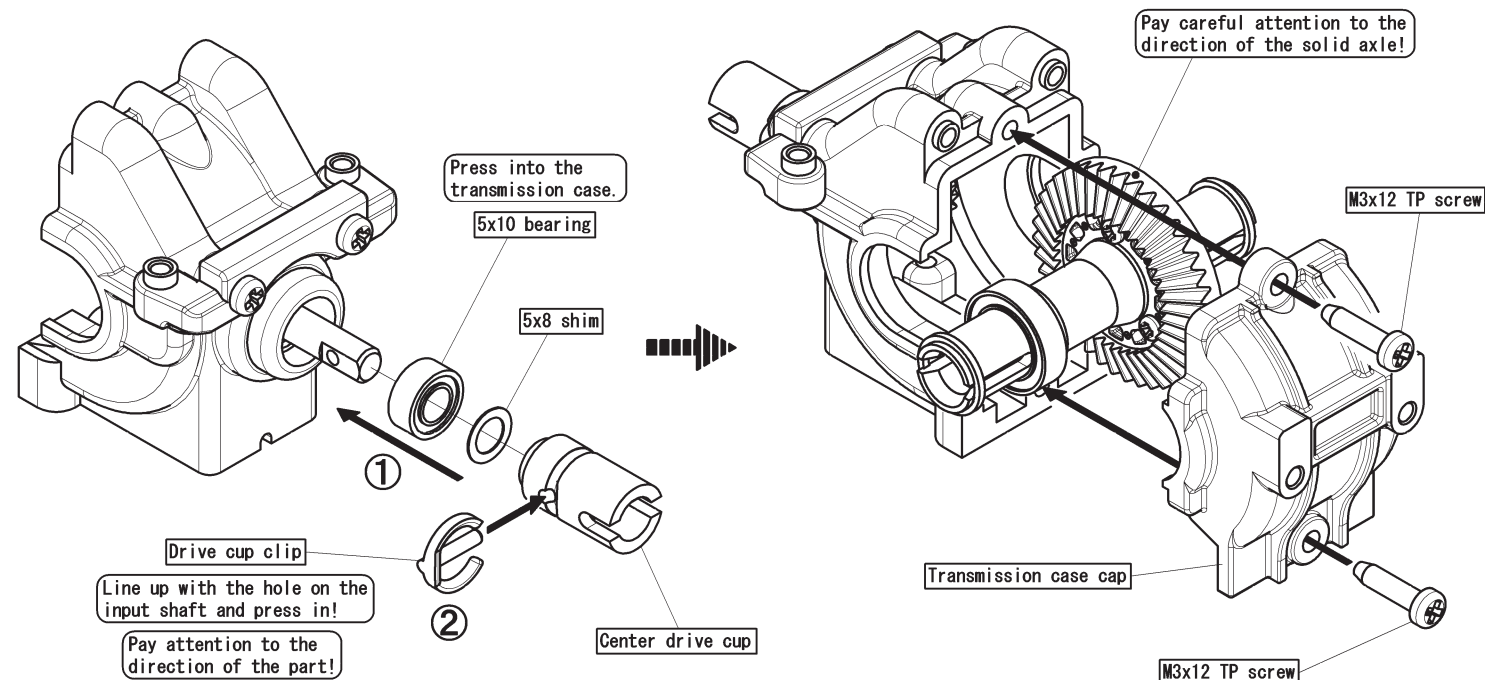
8x11mm shim --x2

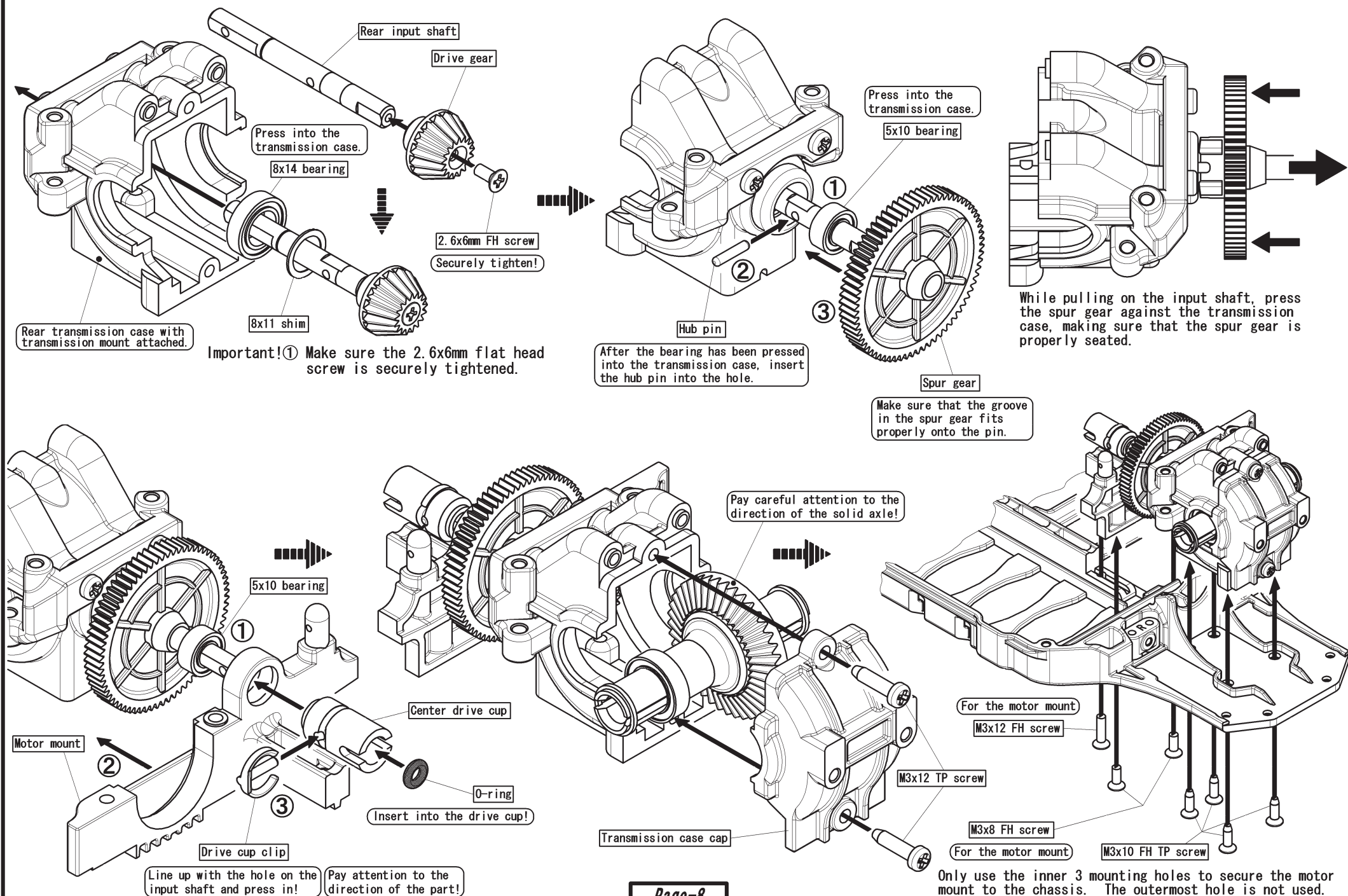
5x10mm bearing --x3

8x14mm bearing --x2



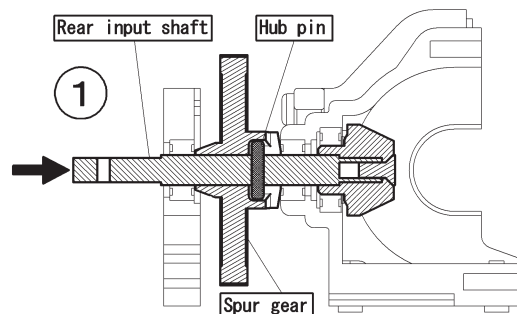
Attach the front transmission mount to the transmission case using the 3x12mm TP screws. Also attach the rear transmission mount to the other transmission case in the same way (to be used on the following page.)



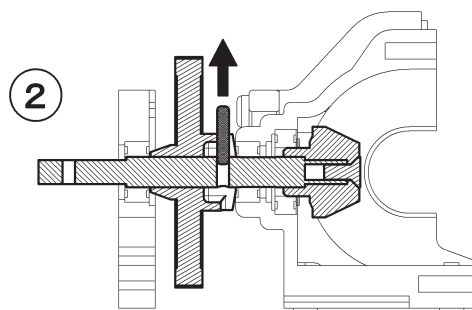


Maintenance Tip!

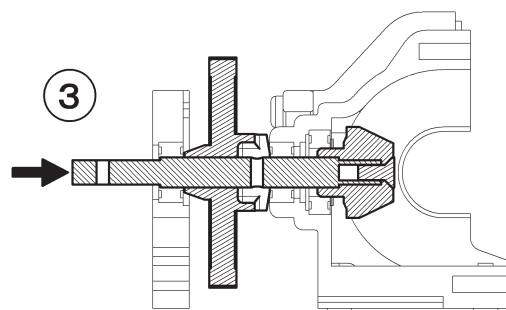
Spur Gear Hub Removal



Remove the transmission cap, solid axle and center drive cup. Slide the input shaft towards the rear.

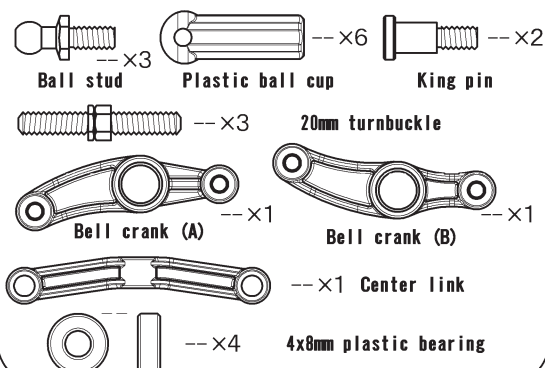


Slide the rear input shaft until the hub pin is visible inside the groove (of the spur gear), and pull out the hub pin. (If the hub pin falls out easily, lightly coat it with a rubber type adhesive.)

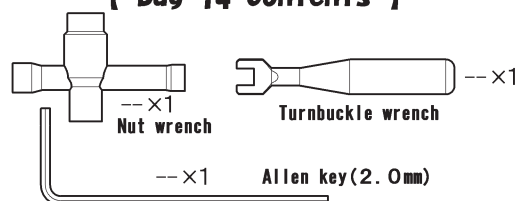


Pull out the rear input shaft completely to remove the spur gear. (When re-assembling, repeat the above steps in reverse.)

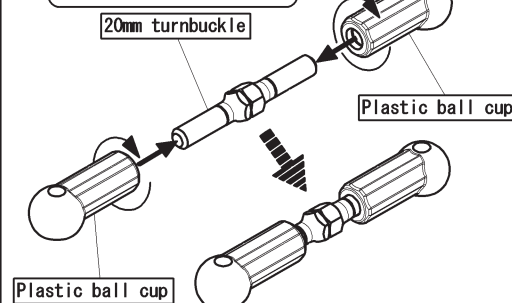
[Bag-4 Contents]



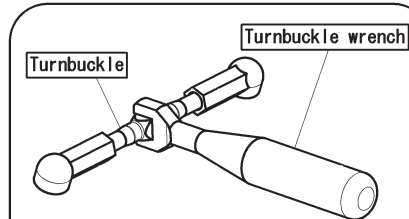
[Bag-14 Contents]



One side of the turnbuckle is reverse threaded.



Assemble the tie-rod by attaching a plastic ball cup to both ends of the turnbuckle.

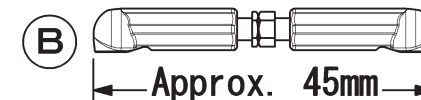


• Bag contains a turnbuckle wrench. Please use it to make adjustments to the length of the tie-rod.

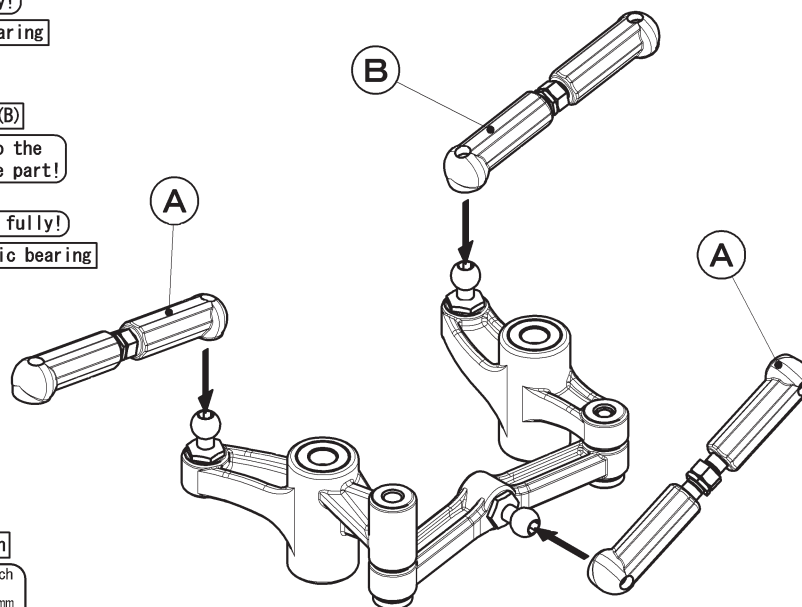
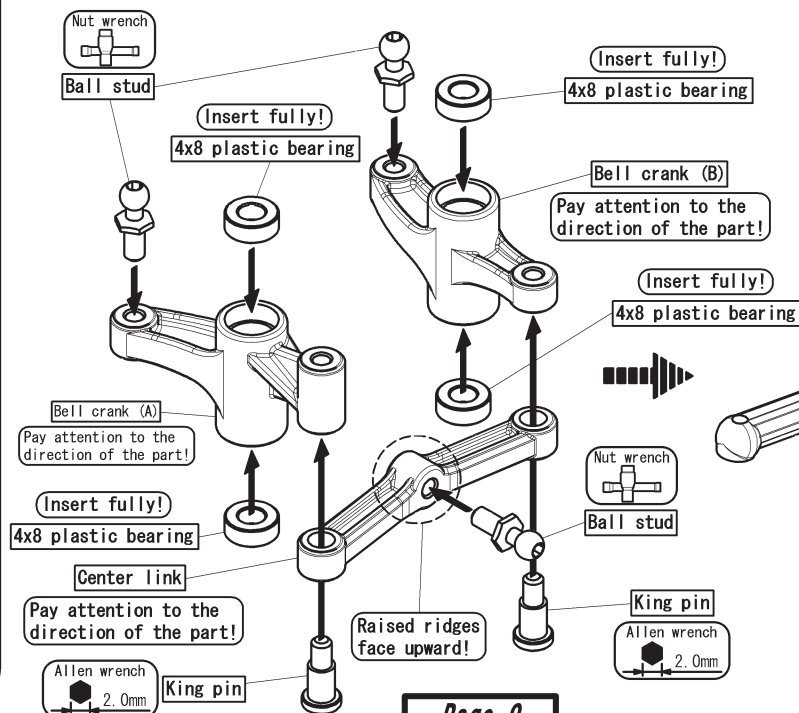
Assemble 2 rods




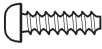

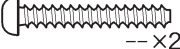
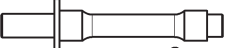
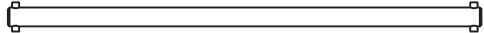
Assemble 1 rod



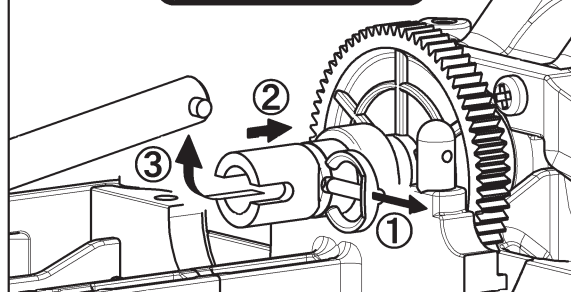
Length tuning is required by the servo to be used.



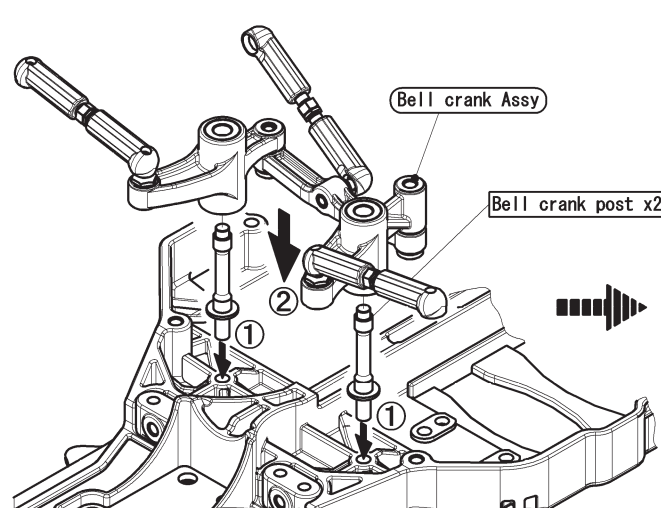
[Bag-5 Contents]

-  --×4 3x10mm FH TP screw
-  --×2 3x10mm TP screw
-  --×4 3x12mm TP screw
-  --×2 3x20mm TP screw
-  --×2 Bell crank post
-  --×1 Main drive shaft

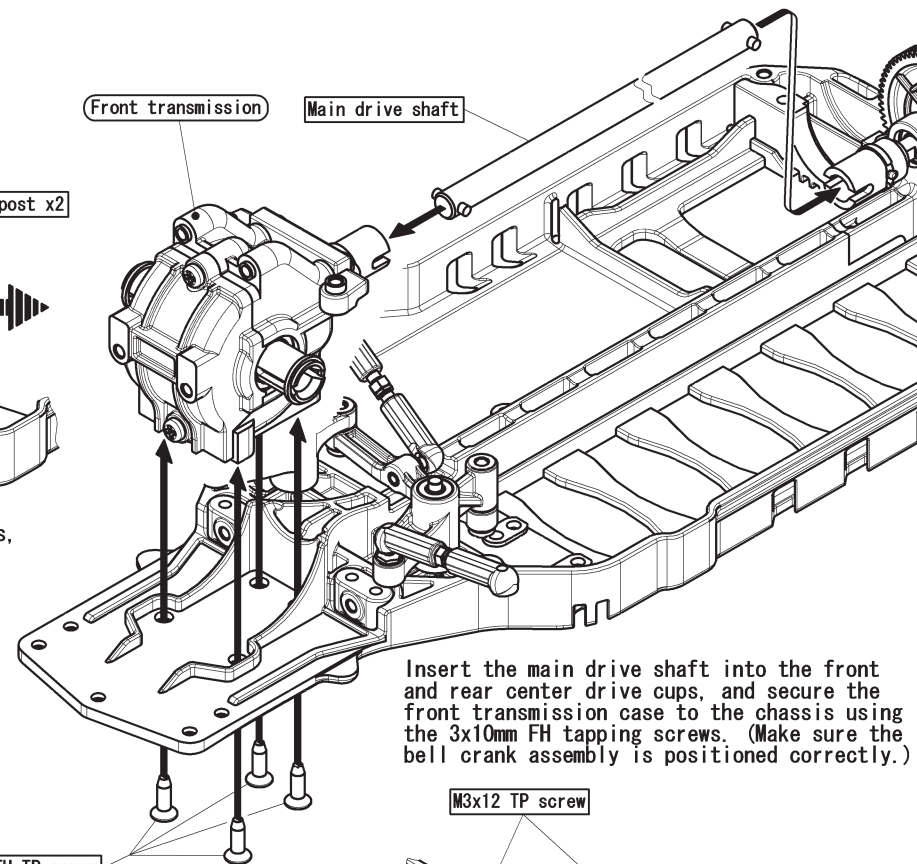
Maintenance Tip!



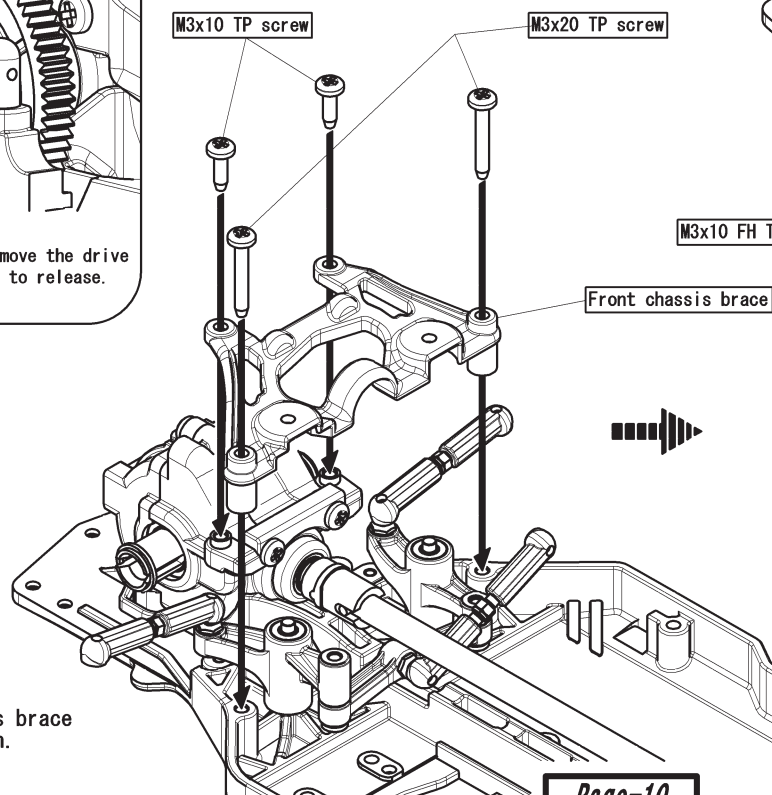
For easy removal of the main drive shaft, remove the drive cup ring and slide the center drive cup back to release.



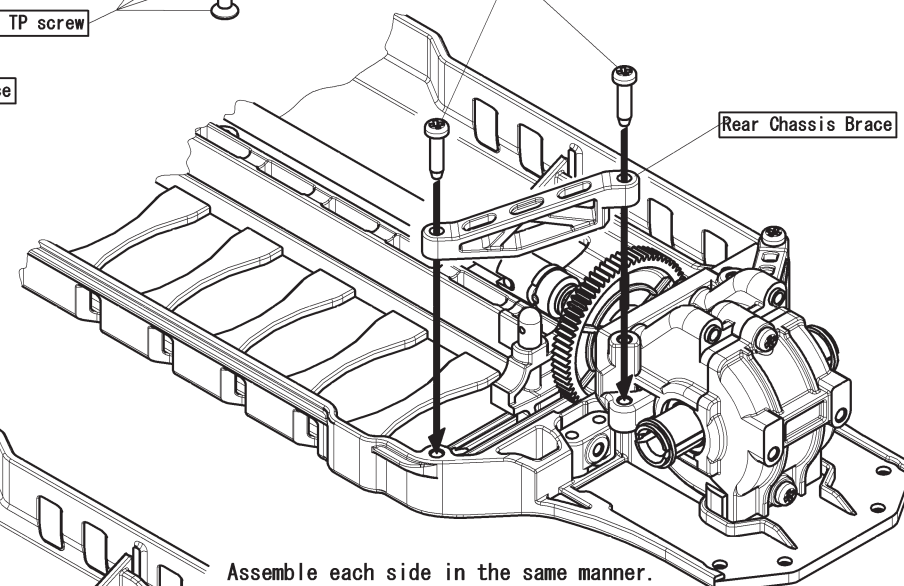
Insert the two bell crank posts into the chassis, and slide the previously assembled bell crank assembly onto the posts.



Insert the main drive shaft into the front and rear center drive cups, and secure the front transmission case to the chassis using the 3x10mm FH tapping screws. (Make sure the bell crank assembly is positioned correctly.)

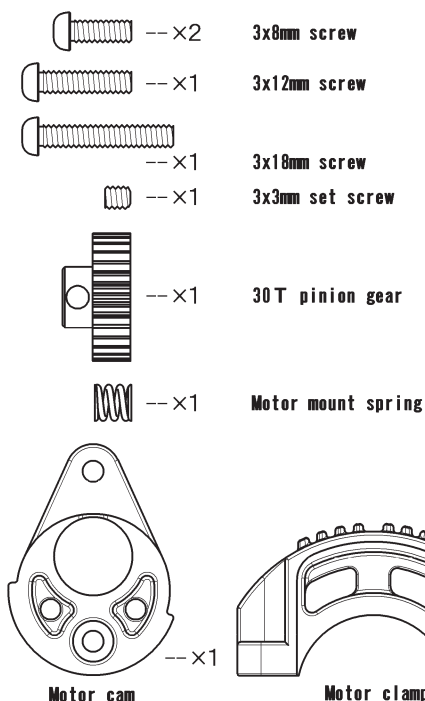


Secure the front chassis brace with the screws as shown.

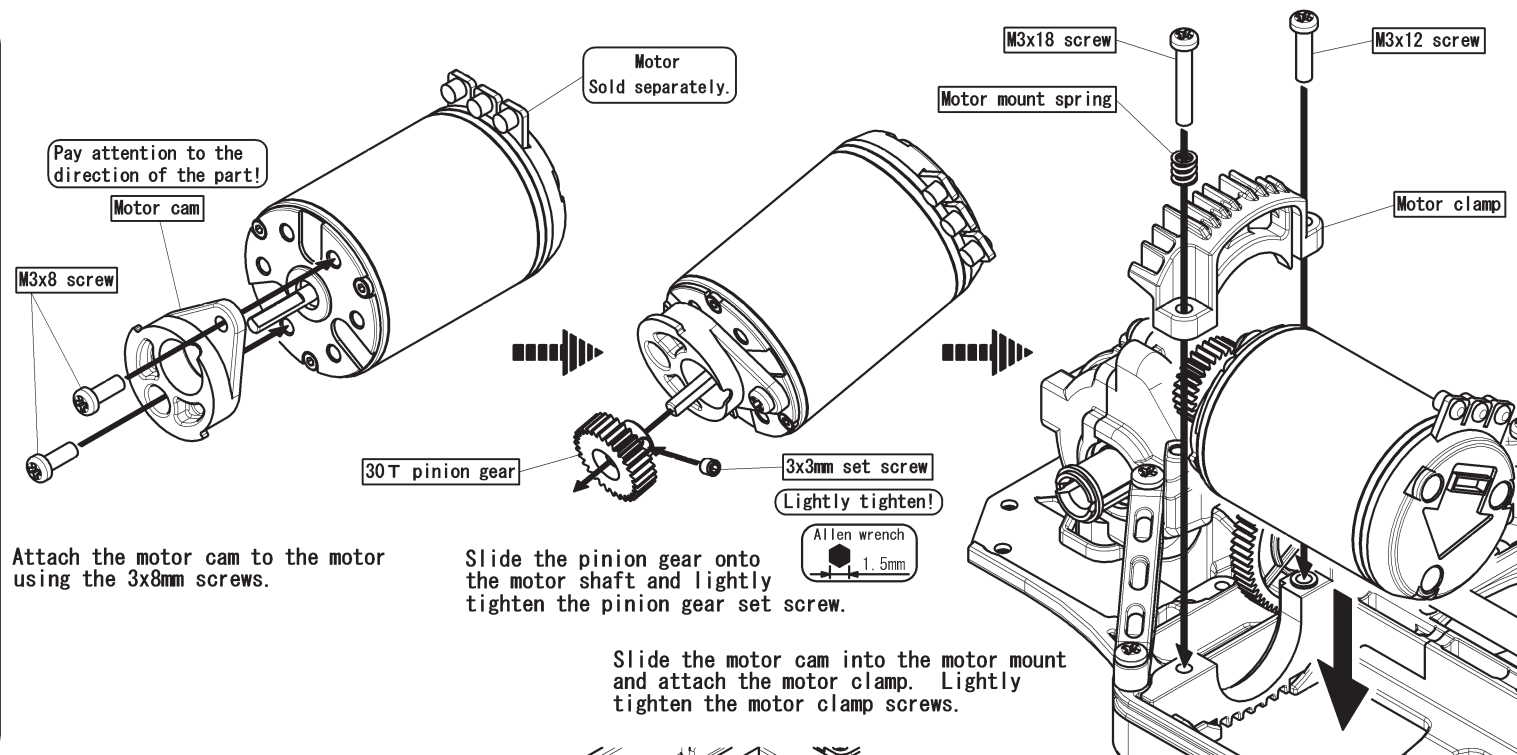


Assemble each side in the same manner.

[Bag-6 Contents]



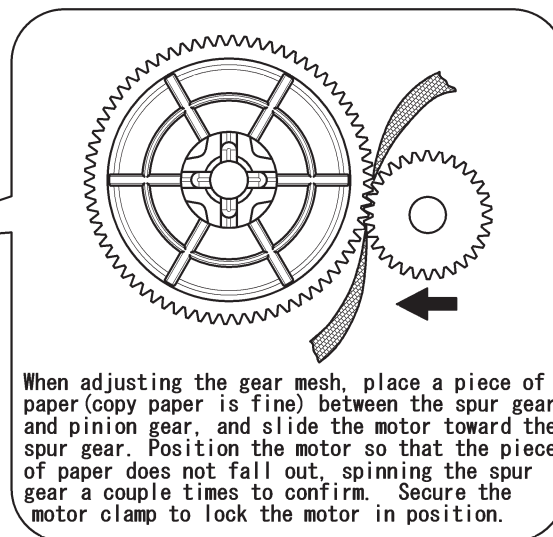
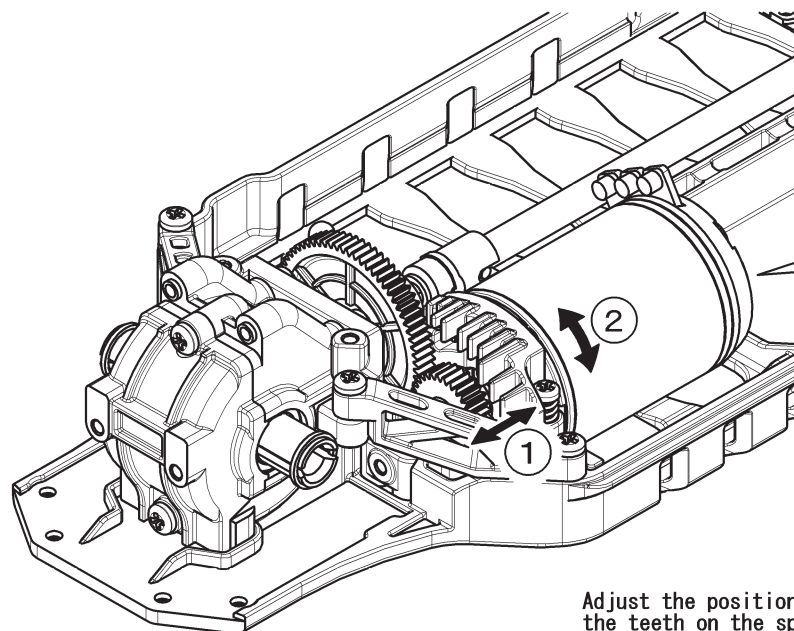
[Bag-14 Contents]



Attach the motor cam to the motor using the 3x8mm screws.

Slide the pinion gear onto the motor shaft and lightly tighten the pinion gear set screw.

Slide the motor cam into the motor mount and attach the motor clamp. Lightly tighten the motor clamp screws.

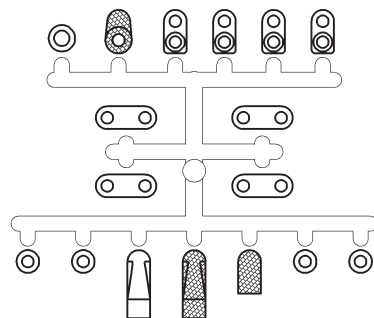
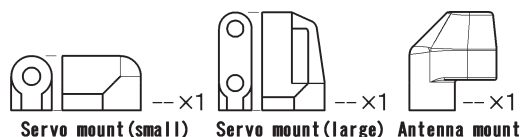
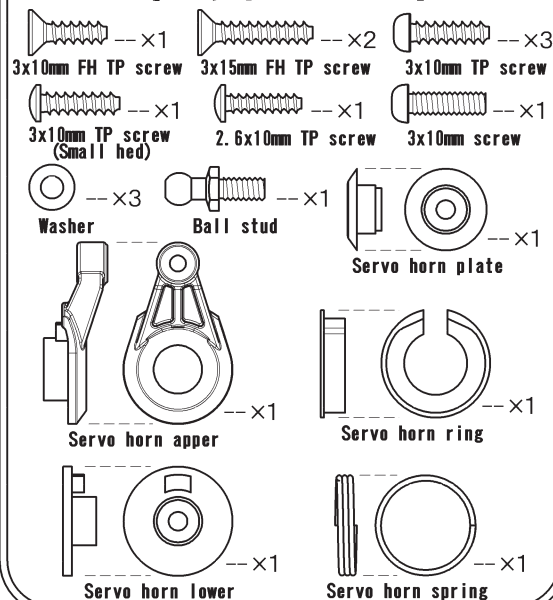


Adjust the position of the pinion gear so that it lines up with the teeth on the spur gear. Secure the pinion gear in position by tightening the set screw. Once the gear mesh is adjusted and the M3x12 screw is tightened, tighten the M3x18 screw until the spring is compressed, then back off one full turn.

Important!

- ① Motor not included in kit. Please purchase separately.
- ② Install the pinion so that the set screw is tightened onto the flat portion of the motor shaft.
- ③ Adjust the gear mesh to allow a very small gap between the teeth of the pinion and spur gear.
(improper adjustment of the pinion and spur may result in damage to the gears.)
- ④ Continuous running of the motor will result in shorter motor life. Allow the motor to cool between runs.

[Bag-7 Contents]



Shaded parts are used for this step.

Important!② Make sure that the servo is centered before attaching the servo horn lower. (Refer to your radio manual for more information.)

③ Kit includes 3 servo horns. Select the servo horn designated for use with the servo being used. (Using an incorrect servo horn may result in damage to the servo.)

Pay attention to the direction of the part!

Servo horn upper (use the shorter horn!)

Ball stud

Attach at an angle!

Servo horn ring

Servo horn spring

Make sure that the ends of the servo horn spring do not catch on the edges of the servo horn ring.

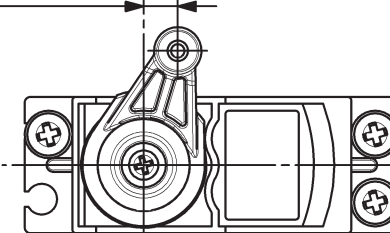
2 servo horns are provided. Use the shorter servo horn. As shown in the illustration, attach the servo horn ring at an angle.



Mark	Manufacturer
Y	Yokomo S005
Y F	Yokomo S003, Futaba
J K S	JR, KO, Sanwa

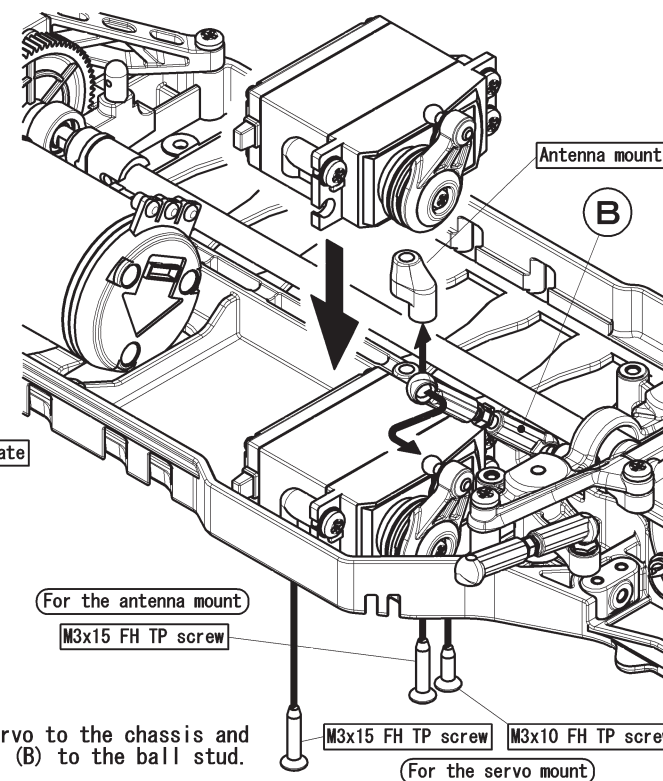
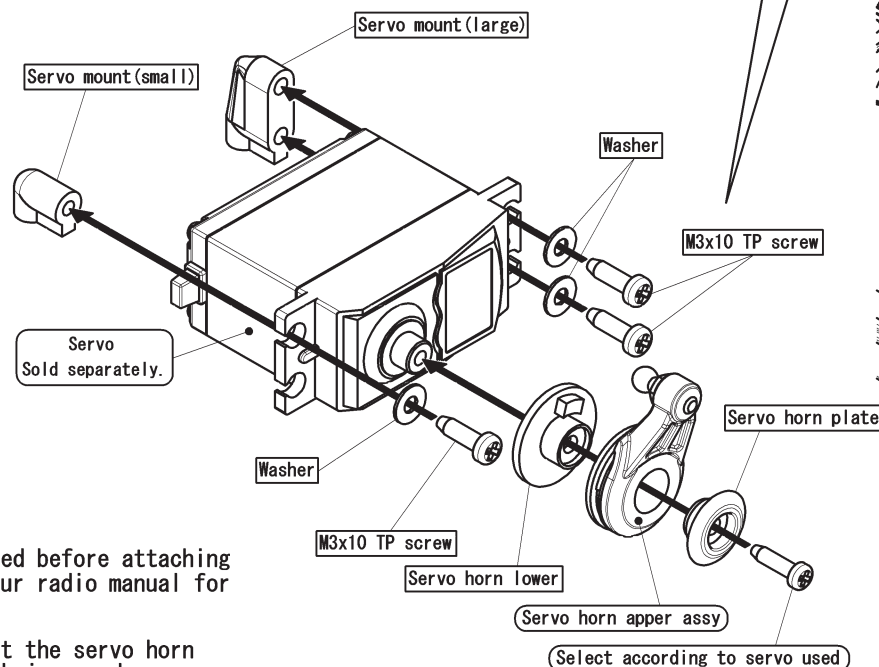
The included servo horn lower are marked with a letter designating servo compatibility. Select the servo horn matching the servo being used.

1 notch

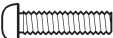








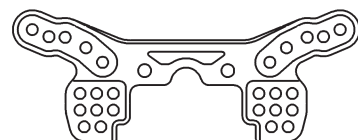
After the servo has been centered, attach the servo horn so that the hole on arm is 5mm off center (or about 1 notch).

Important!① Attach the servo horn to the servo using the same (or similar) screw included with the servo unit. (3 different screws are included in the kit: 2.6x10mm tapping screw, 3x10mm tapping screw, 3x10mm screw)

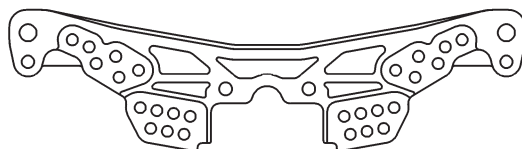


[Bag-8 Contents]

-  --×4 3x12mm button head screw
-  --×2 3x10mm TP screw
-  --×2 3x12mm TP screw
-  --×2 3mm nut
-  --×4 33mm turnbuckle
-  --×4 Ball stud
-  --×4 Shock cap ball




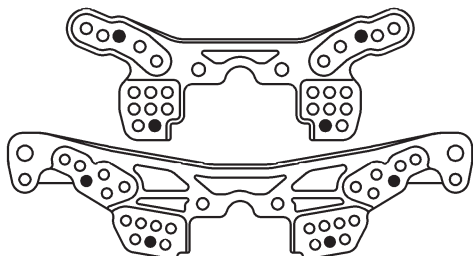
--×1 Front shock tower



--×1 Rear shock tower

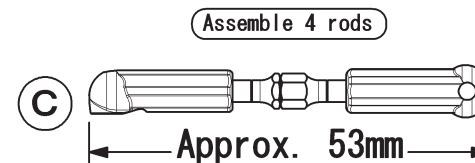
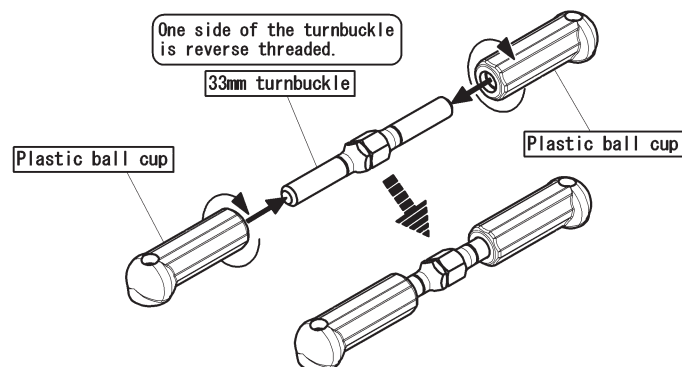
Remaining parts from [Bag-4 Contents]

-  --×8 Plastic ball cup

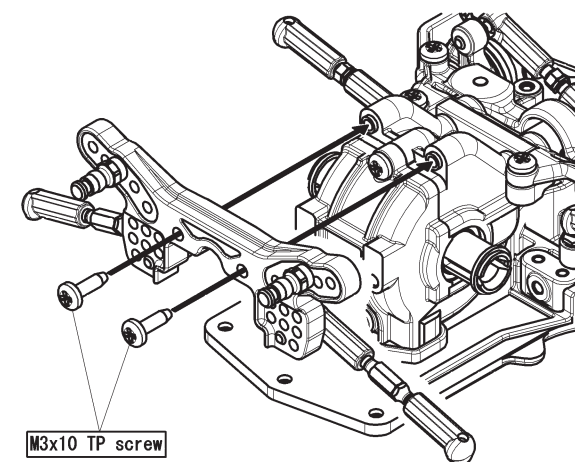
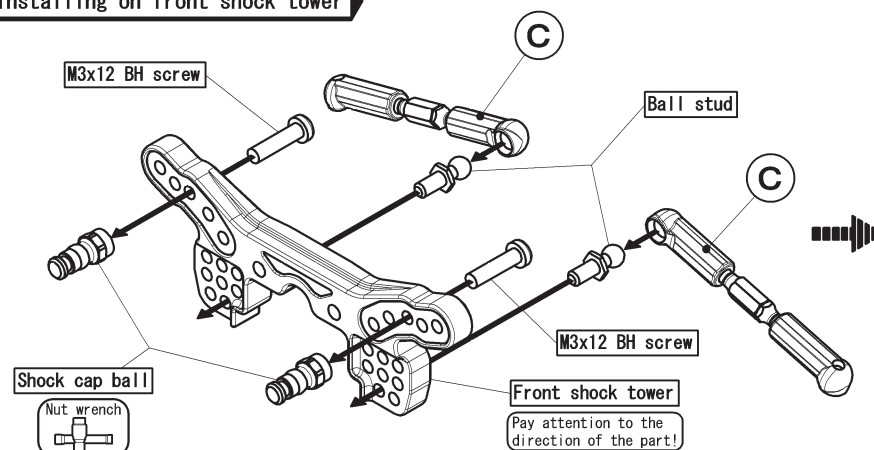


Use marked holes.

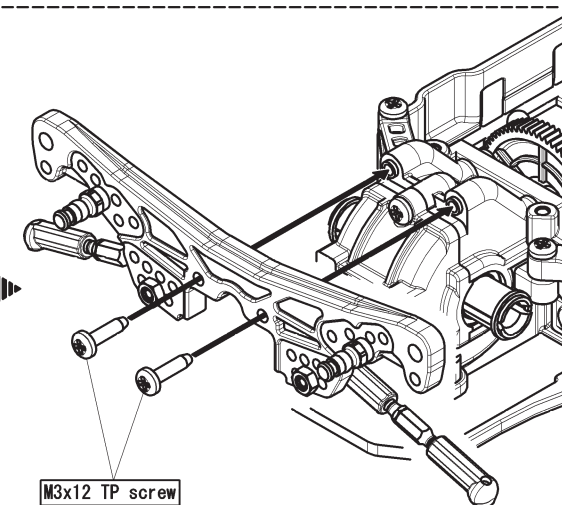
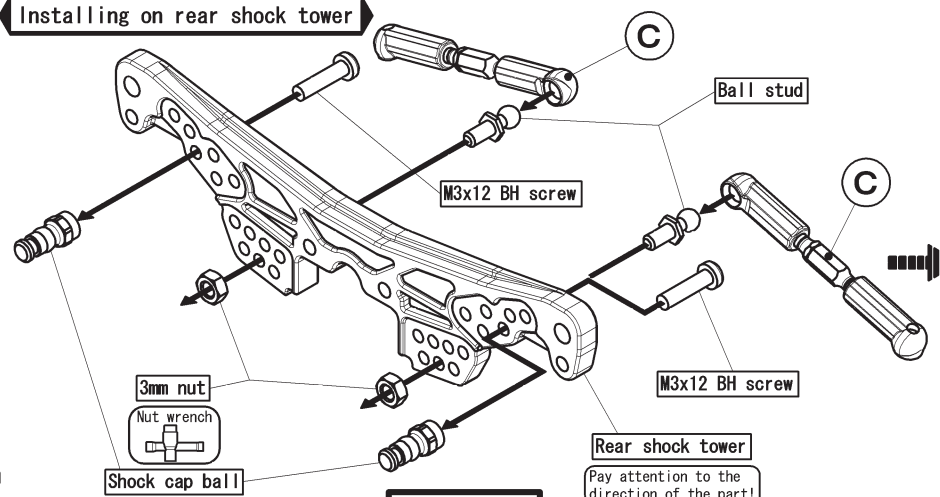
Important!—Pay close attention to the direction both front and rear shock towers.



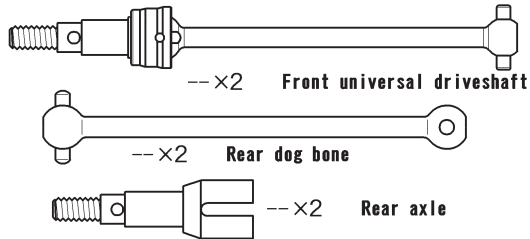
Installing on front shock tower



Installing on rear shock tower

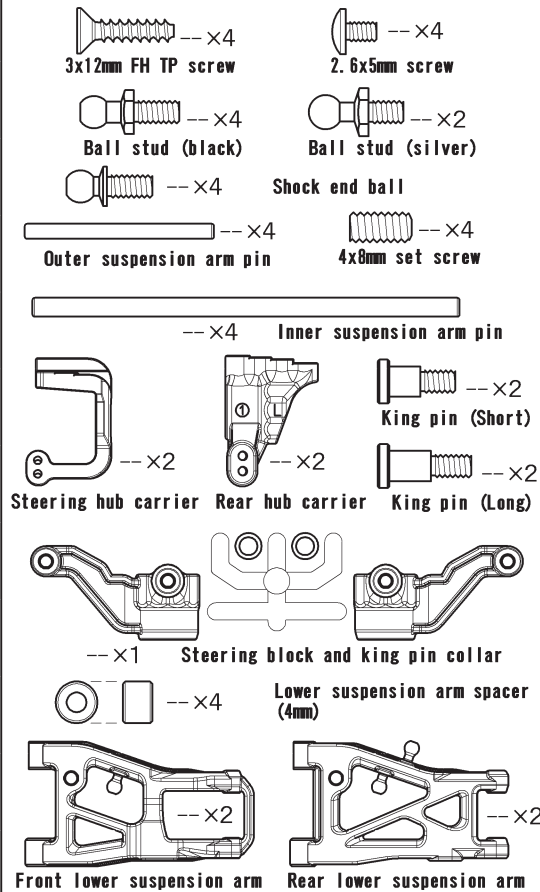


[Bag-9 Contents]

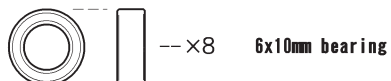


Also included: joint grease x 1

[Bag-10 Contents]

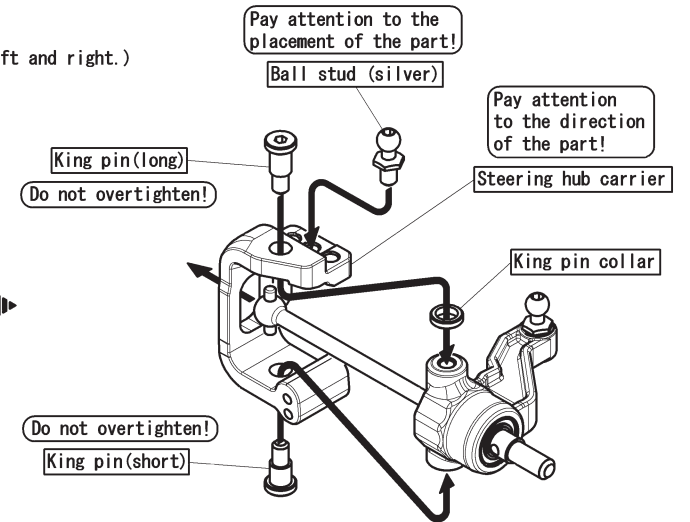
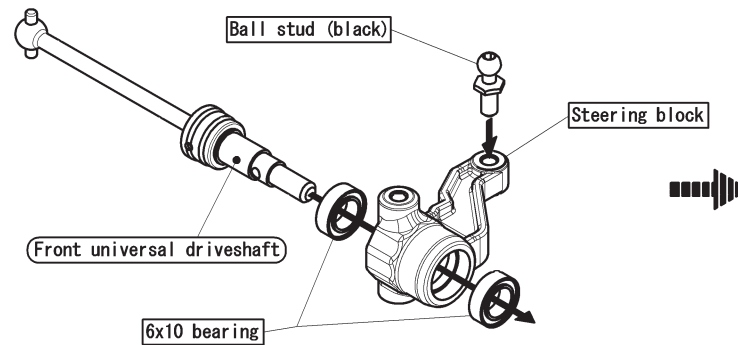


Also included: suspension mount x 1



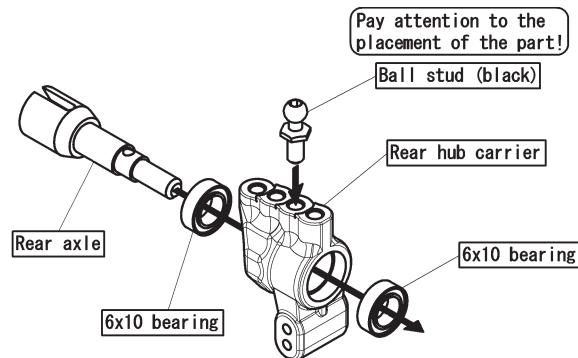
Front Hub Carrier Assembly

Assemble 2 sets.
(The steering hub carriers are different left and right.)



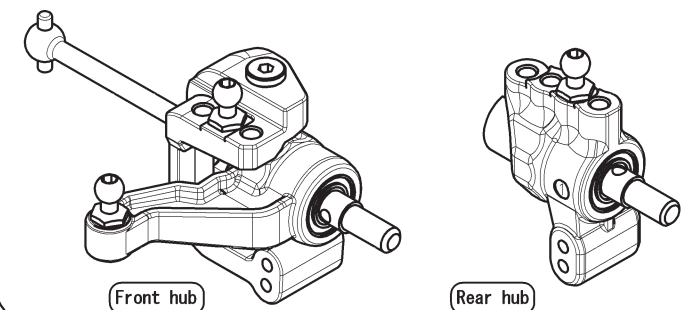
Rear Hub Carrier Assembly

Assemble 2 sets.



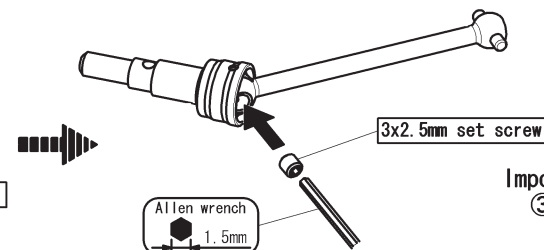
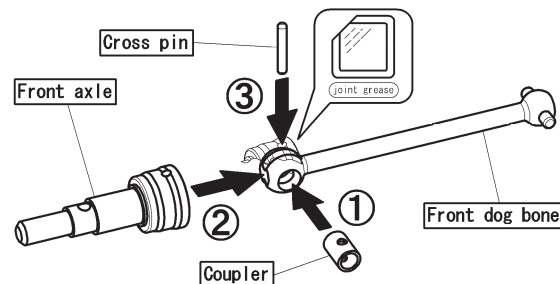
Important! ① The left and right steering hub carriers are different.
② Slowly tighten the upper king pin. Overtightening the king pin may cause the king pin collar to be squished, preventing the steering block from moving freely.

[Assemble each side in the same manner.]



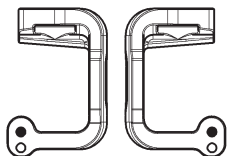
Front Universal Driveshaft Assembly

Perform when maintenance is required.

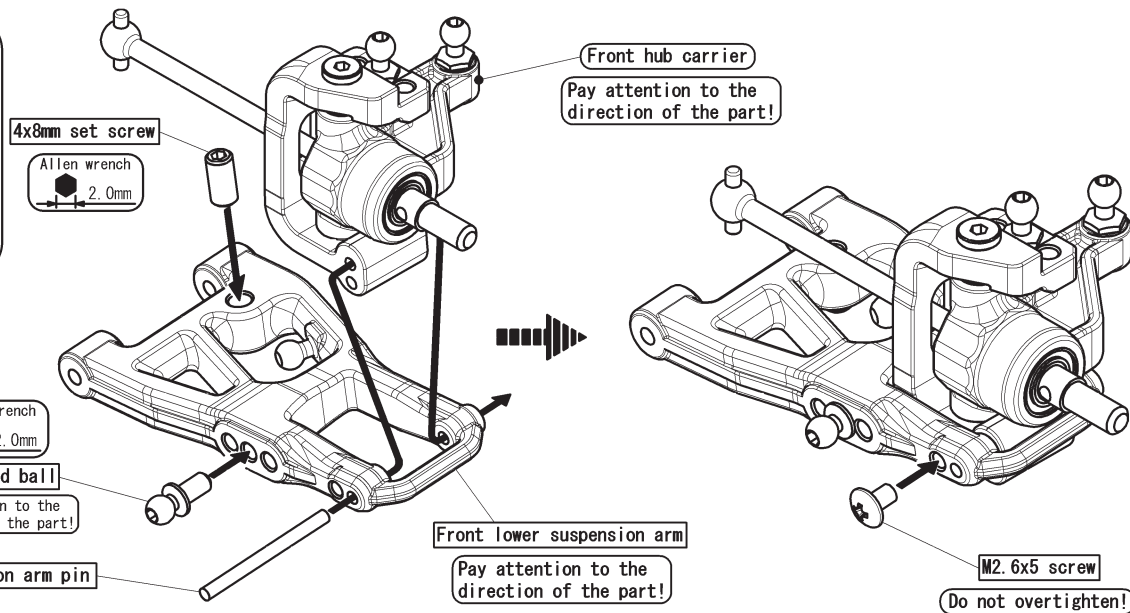


Important!
③ Apply joint grease to the dog bone when assembling.
(Black grease (sold separately) can also be used.)

Front Assembly

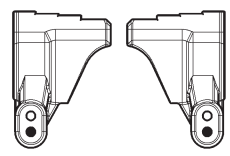


Use the marked holes.

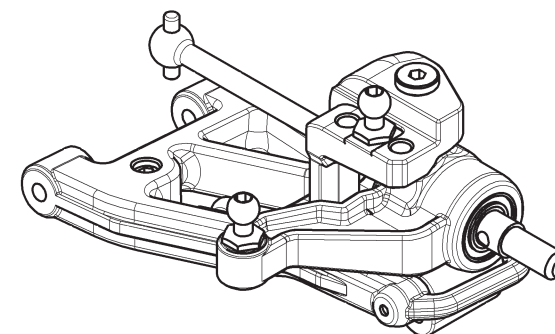
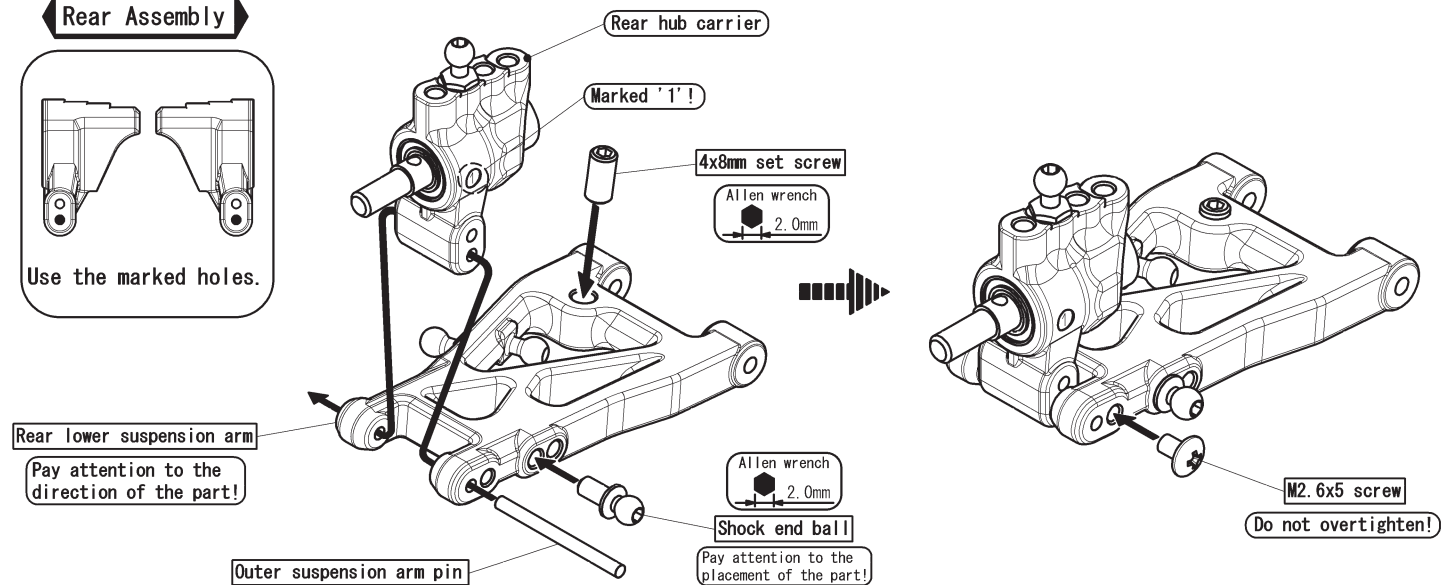


In the front, tighten the M4x8 Set Screw until approximately 2mm of screw thread are show beneath the lower suspension arm. In the rear, tighten the screw so that the threads do not show beneath the lower suspension arm.

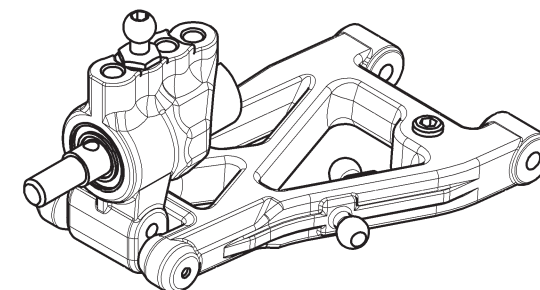
Rear Assembly



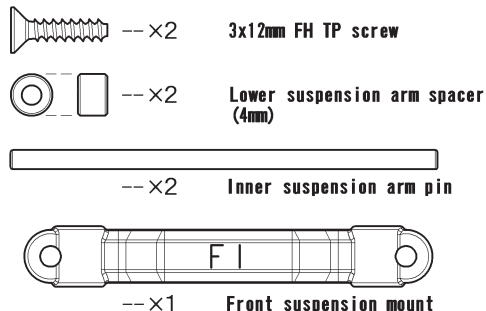
Use the marked holes.



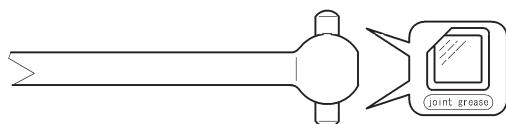
【 Assemble each side in the same manner. 】



[PARTS USED ON THIS PAGE]



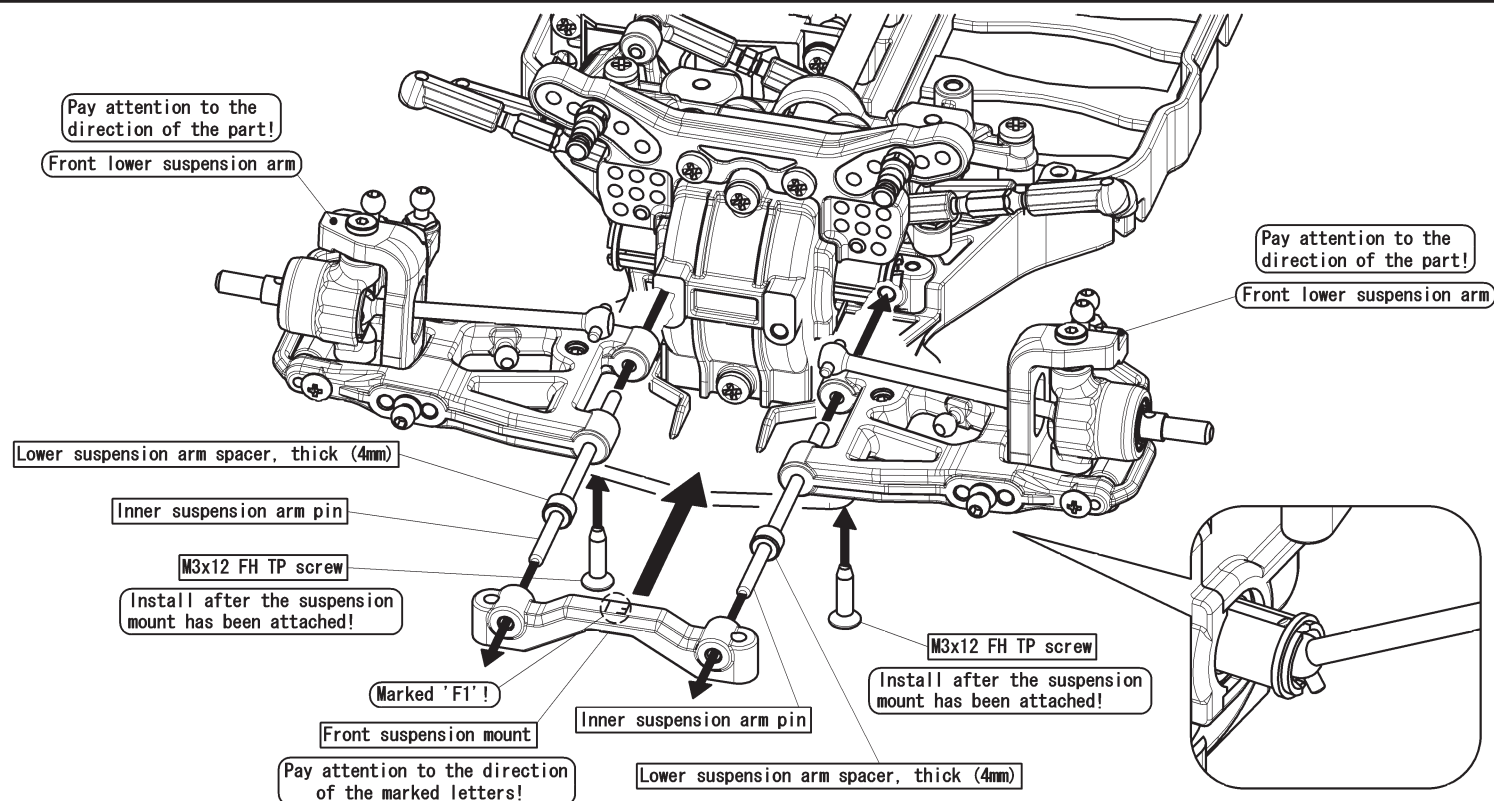
[Read before assembly!]



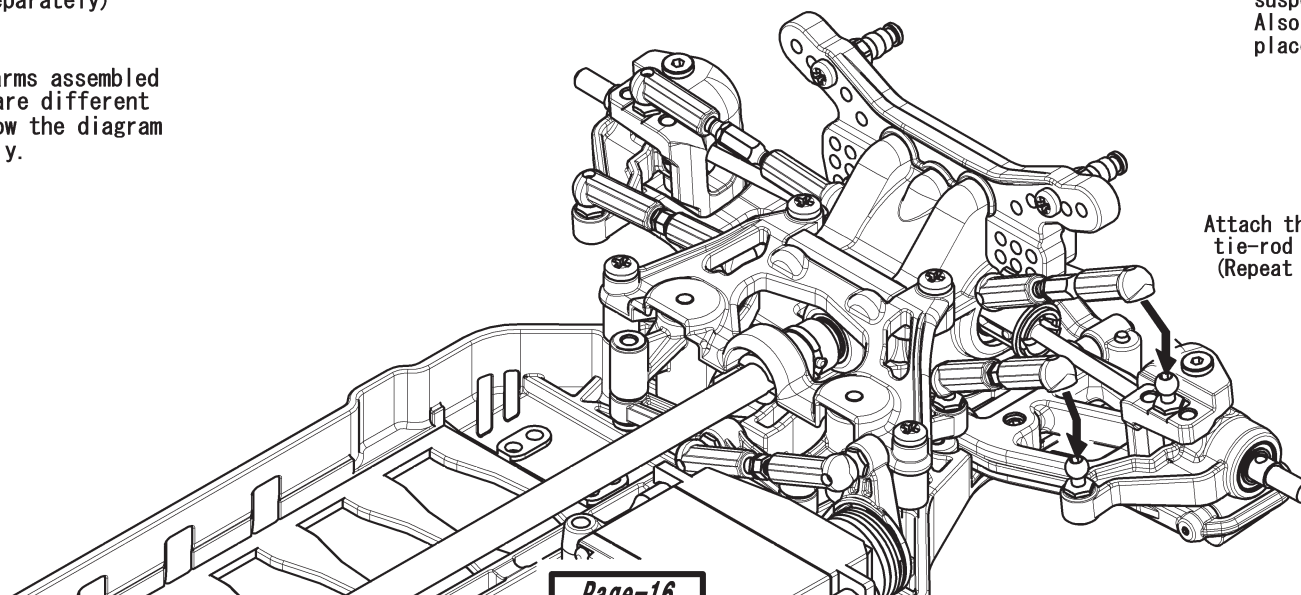
Apply (joint grease) to the front and rear dog bone pins.

Important!① Always apply joint grease to the front dog bone pins. (Black grease (sold separately) can also be used.)

② The front suspension arms assembled in the previous step are different left and right. Follow the diagram closely during assembly.



Slide the dog bone into the outdrive, position the arm and insert the suspension arm pin into the mount. Also pay close attention to the placement of the spacers.



[PARTS USED ON THIS PAGE]

3x12mm FH TP screw --x2

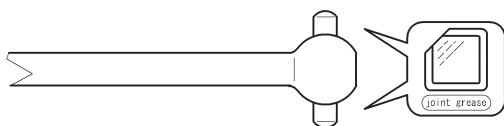
Lower suspension arm spacer (4mm) --x2

Rear dog bone --x2

Inner suspension arm pin --x2

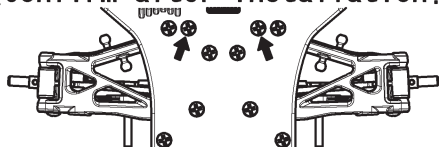
Rear suspension mount --x1

【Read before assembly!】



Apply (joint grease) to the front and rear dog bone pins.

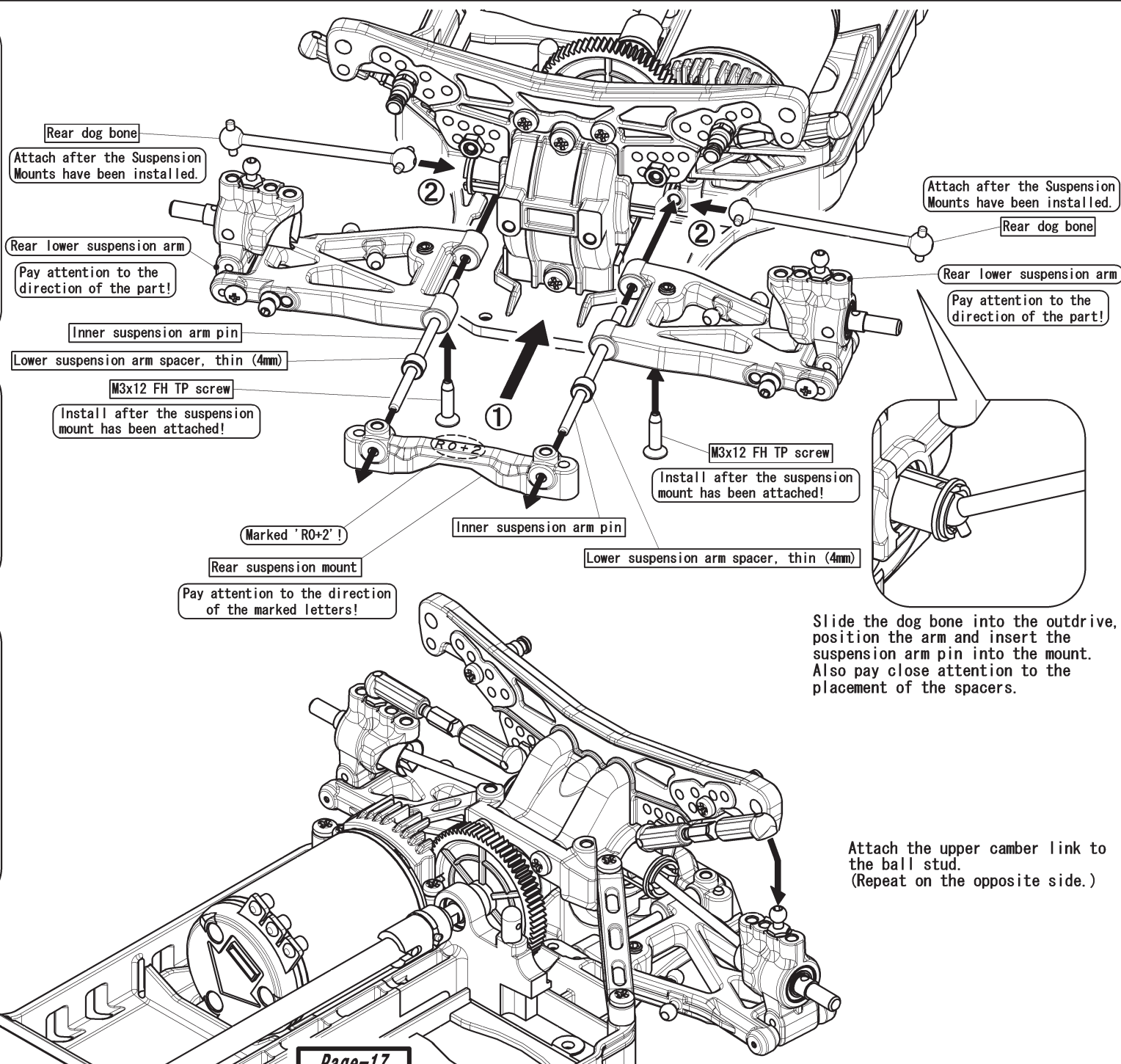
【Confirm after installation!】



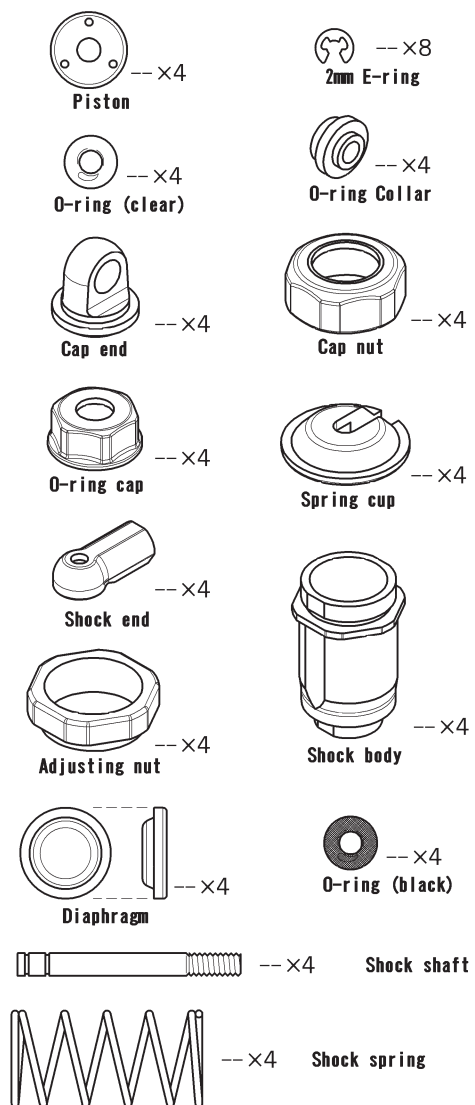
After the suspension arms have been installed, check to see that the suspension arms move freely. If the suspension arms do not move freely, check the suspension mount screws to see if they are overtightened. Overtightening the suspension mount screws may cause the suspension hinge pins distort. During assembly, check the movement of each arm and loosen the screws as necessary. If loosening the screws does not seem to work, remove the indicated screws as shown on the right. (Removing the indicated screws will not affect the handling characteristics of the chassis. Follow these instructions for the front also.)

Important!

- ① Always apply joint grease to the rear dog bone pins. (Black grease (sold separately) can also be used.)
- ② The rear suspension arms assembled in the previous step are different left and right. Follow the diagram closely during assembly.



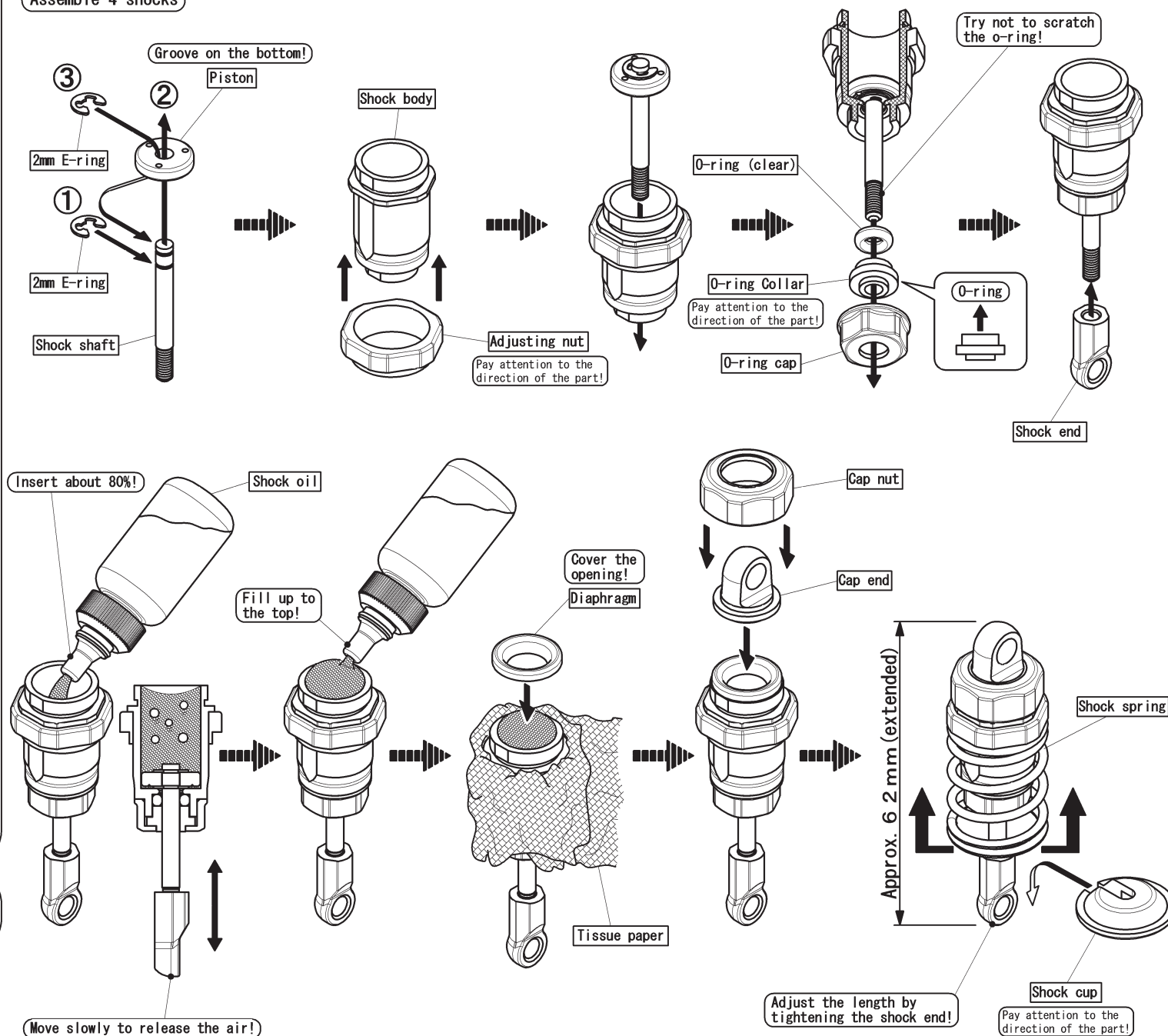
[Bag-11 Contents]



[Bag-15 Contents]

#400 shock oil x 1

Assemble 4 shocks



Front Assembly

O-ring (black)

O-ring (black)

O-ring (black) is attached.

Shock Assembly

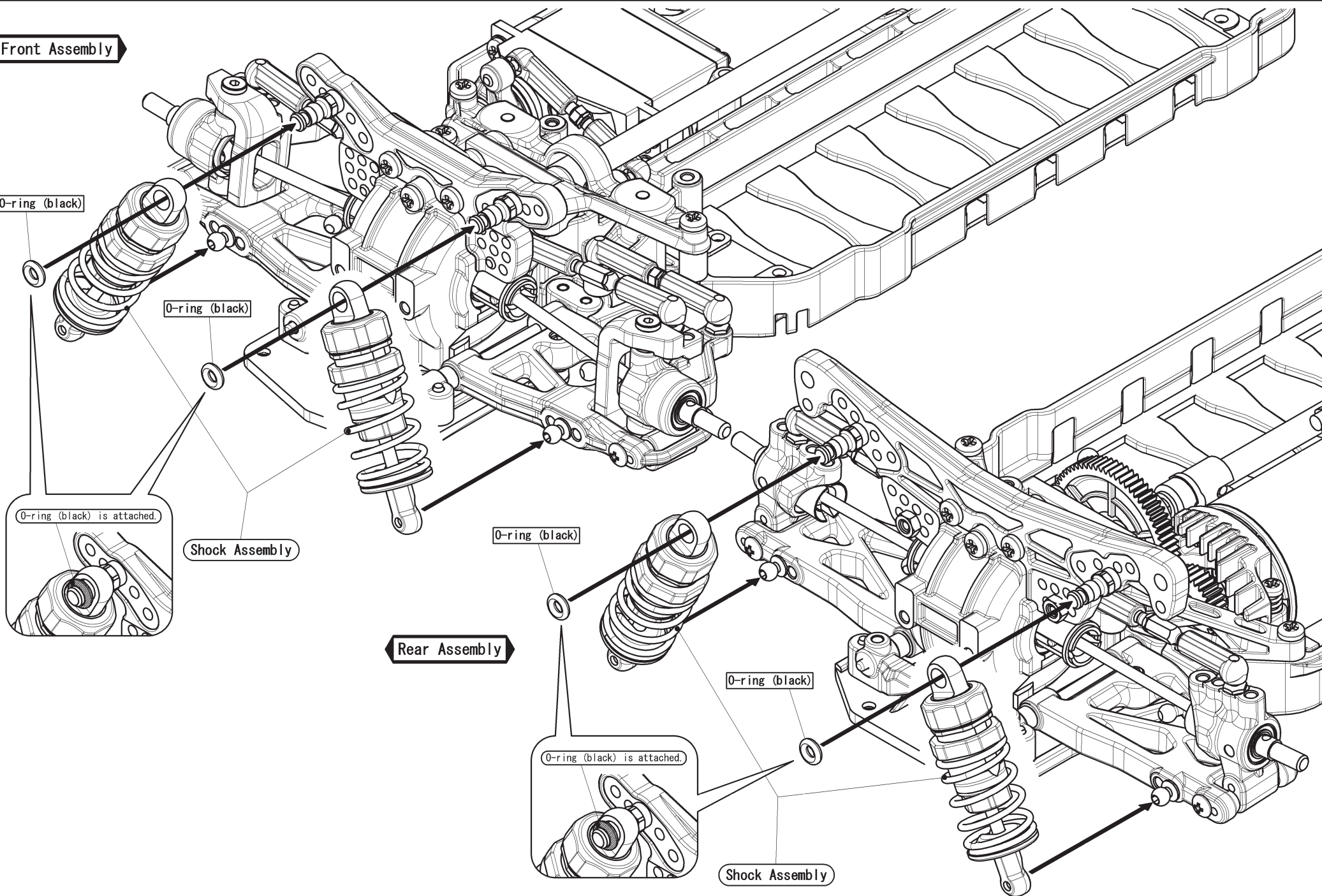
Rear Assembly

O-ring (black)

O-ring (black)

O-ring (black) is attached.

Shock Assembly



[Bag-12 Contents]

3x10mm FH TP screw --x4
3x12mm FH TP screw --x4

3x18mm FH TP screw --x2
3x6mm TP screw --x2

3x10mm TP screw --x2

Front body post --x2

Rear body post --x2

Body clips --x10
Body mount --x4

Front bumper --x1

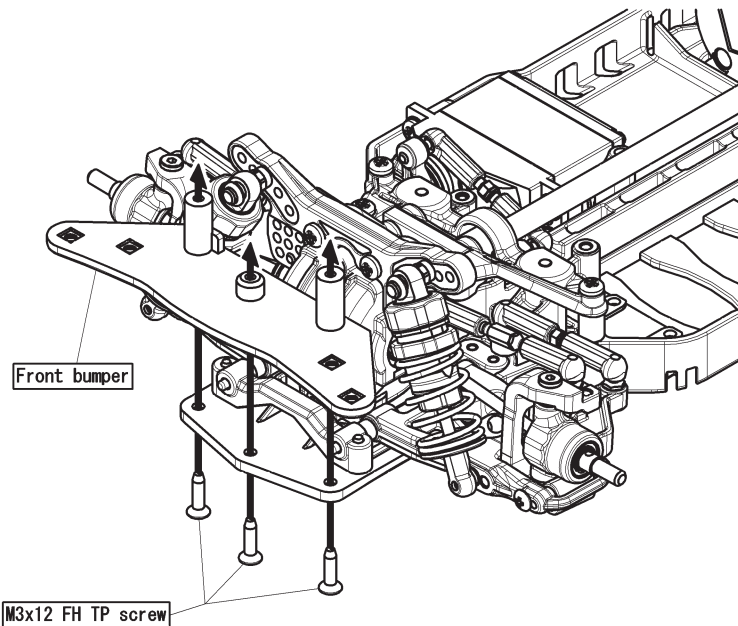
Front bumper support --x1

Rear bumper --x1

Battery mount --x1

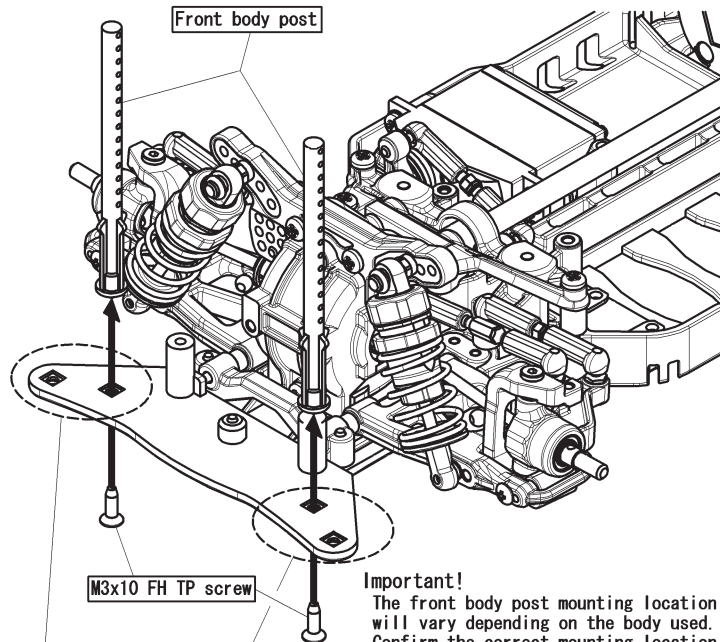
Battery plate --x1

Also included: double-sided tape x 1.
spur gear cover x 1.
foam tape x 3.
nylon band x 2.



Pay attention to the direction of the part!

Front body post

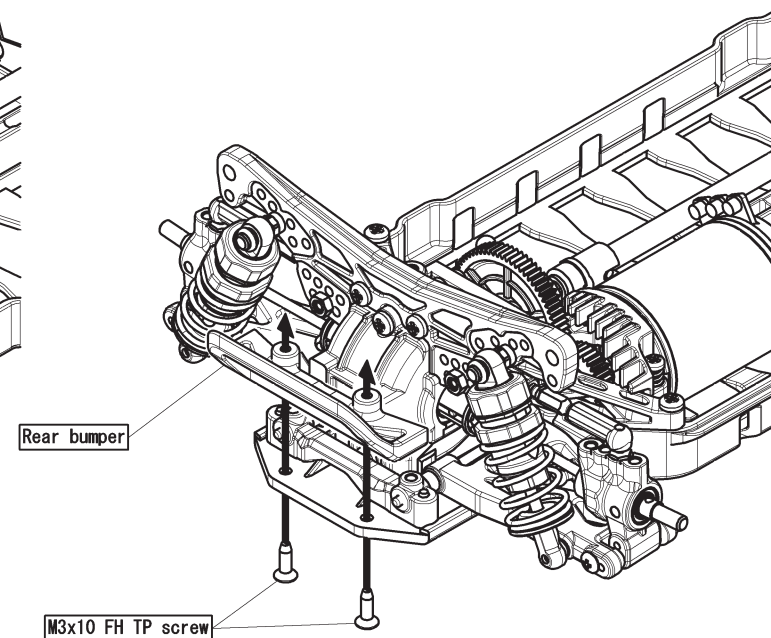


Pay attention to the placement of the part!

M3x10 FH TP screw

Important!

The front body post mounting location will vary depending on the body used. Confirm the correct mounting location by reading the instruction manual included with the body.

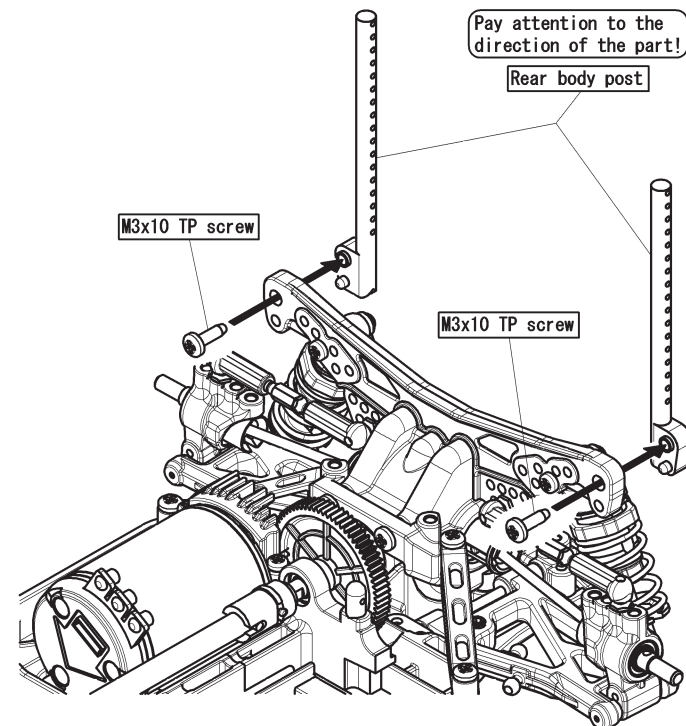


Pay attention to the direction of the part!

Rear body post

M3x10 TP screw

M3x10 TP screw



Front bumper support

M3x18 FH TP screw


Urethane foam bumper
(Included in kit.)


The following illustration shows the front body posts attached to the outer positions.

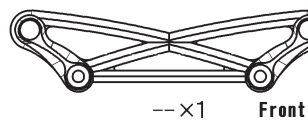
[PARTS USED ON THIS PAGE]

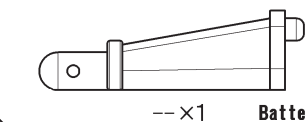
 --x1 3x12mm FH TP screw

 --x2 3x18mm FH TP screw

 --x4 Body clips

 --x4 Body mount

 --x1 Front bumper support

 --x1 Battery mount

Battery mount

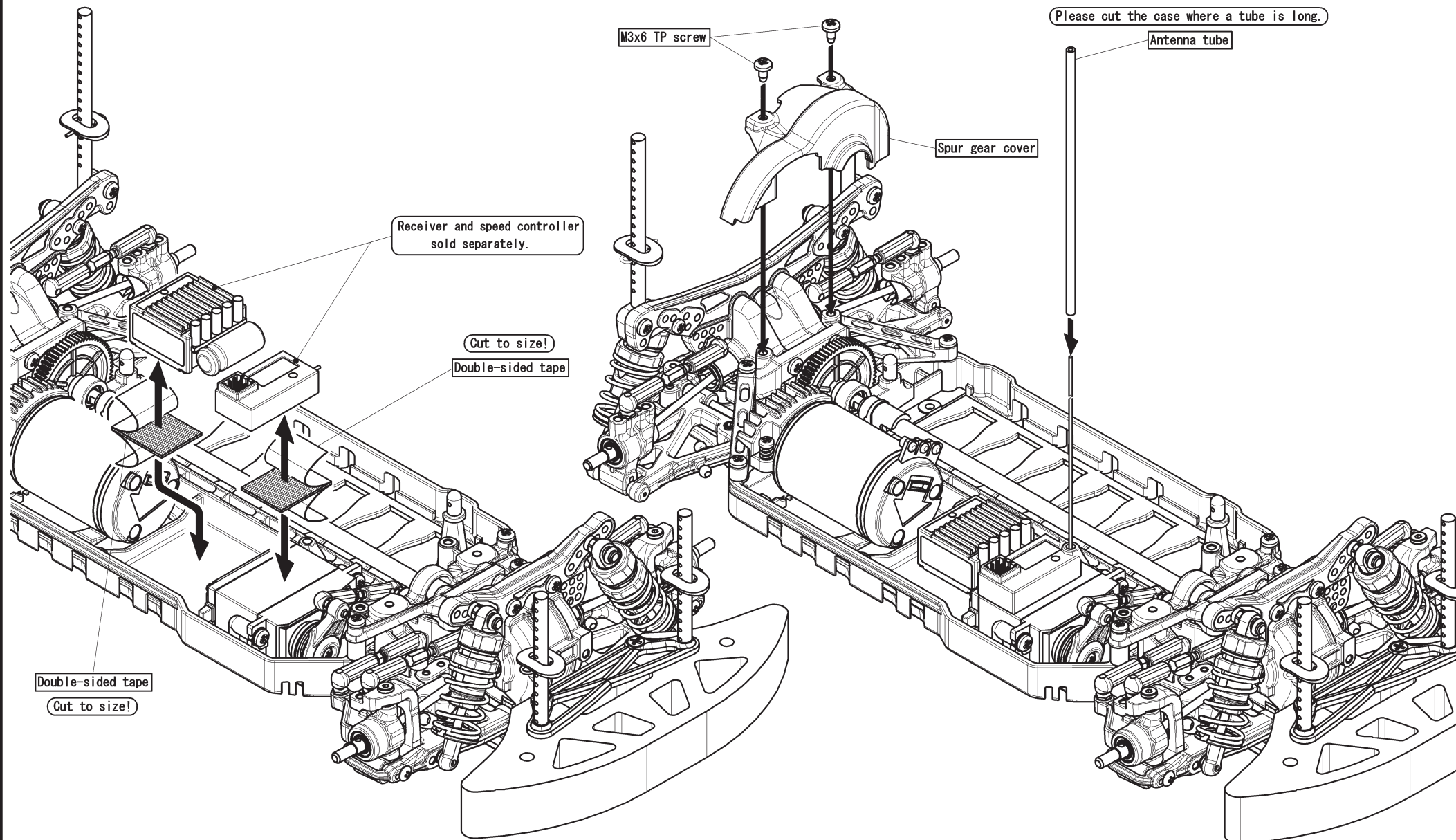
Body mount

Body clips

M3x12 FH TP screw

Slide the body mounts onto the body posts to the desired position. Line up the hole on the body mount and body post, and insert a body clip to secure. (Repeat for all body posts.)

Important!—Adjust the position of the body mount according to the body used.



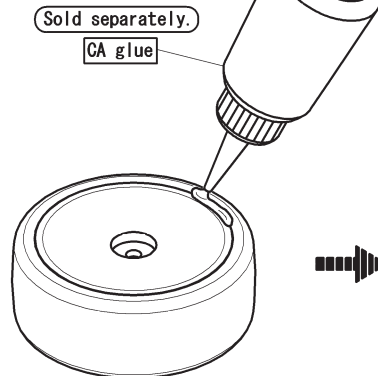
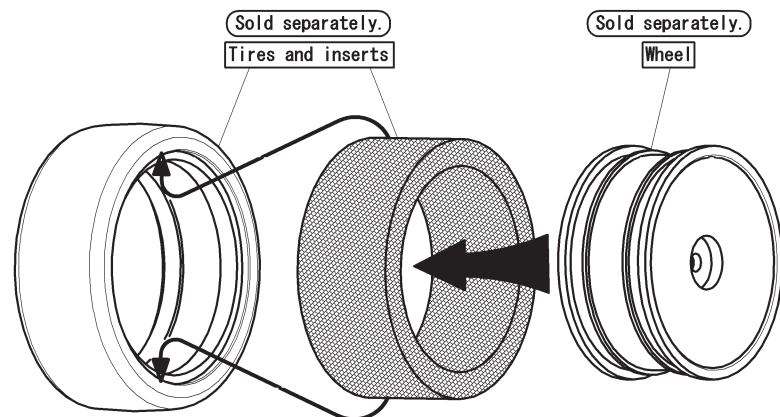
Important!① Secure the receiver and speed controller to the chassis using double-sided tape.
(Cleaning the surface with motor spray will ensure better adhesion.)

Slide the antenna wire through the bottom of the antenna mount and insert into the antenna tube. Leave about 1cm of wire at the top of the tube.
Insert the antenna tube into the antenna mount.

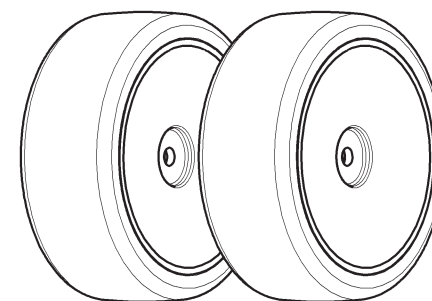
Important!② Make sure to bundle any remaining antenna wire so that it does not interfere with the drivetrain.

Tire Assembly

Place the insert into the tire, and mount the tire onto the wheel.
(Wheels and tires and inserts sold separately.)

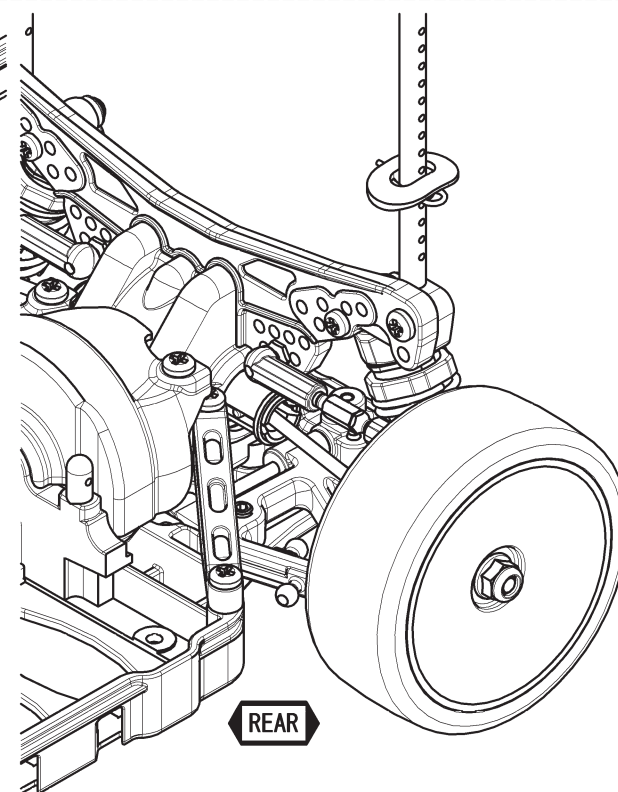
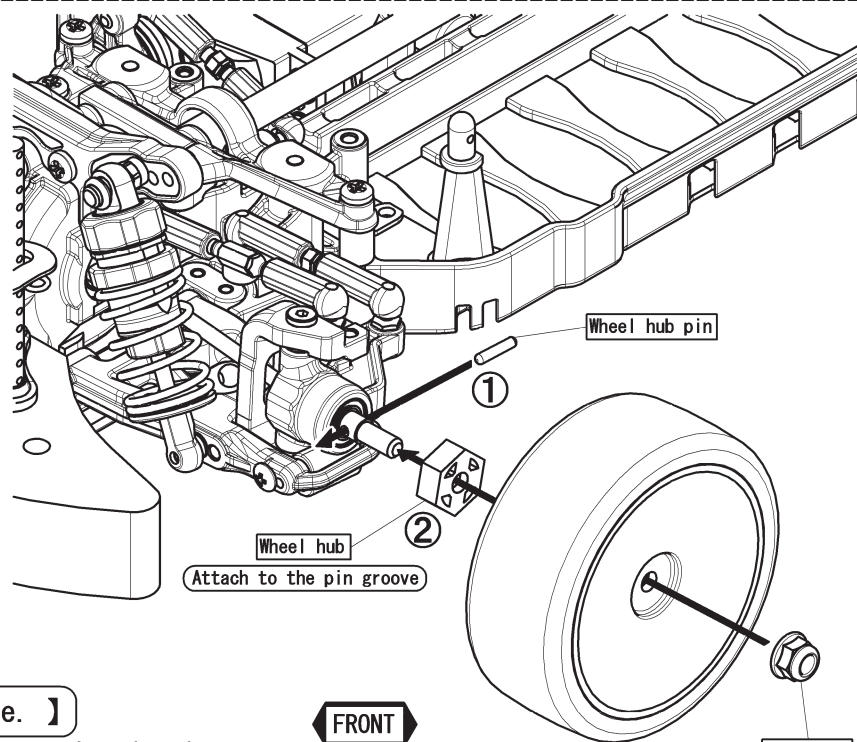
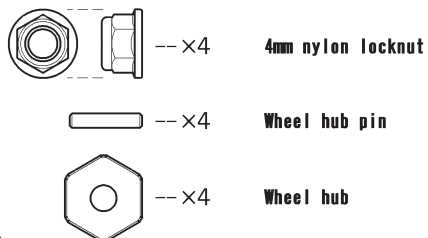


Pull the sidewall of the tire slightly away from the rim and apply CA (Cyanoacrylate) glue in between the tire bead and rim. Make sure that the bead settles onto the rim properly after each application. Slowly work your way around the tire. Allow glue to dry, then repeat on other side.



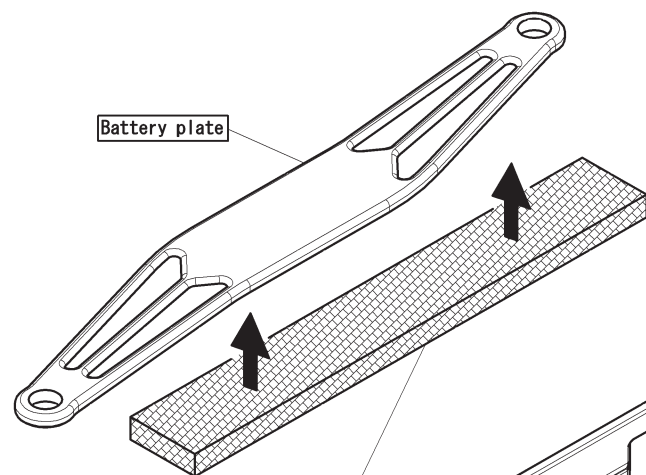
Assemble 4 pieces.

[Bag-13 Contents]



[Repeat for the opposite side.]

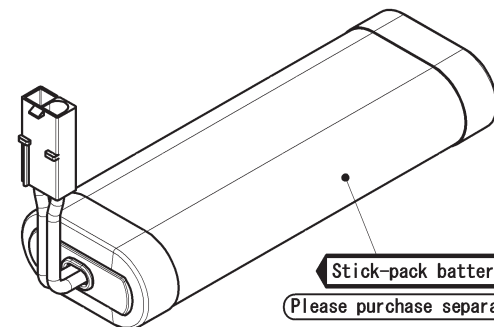
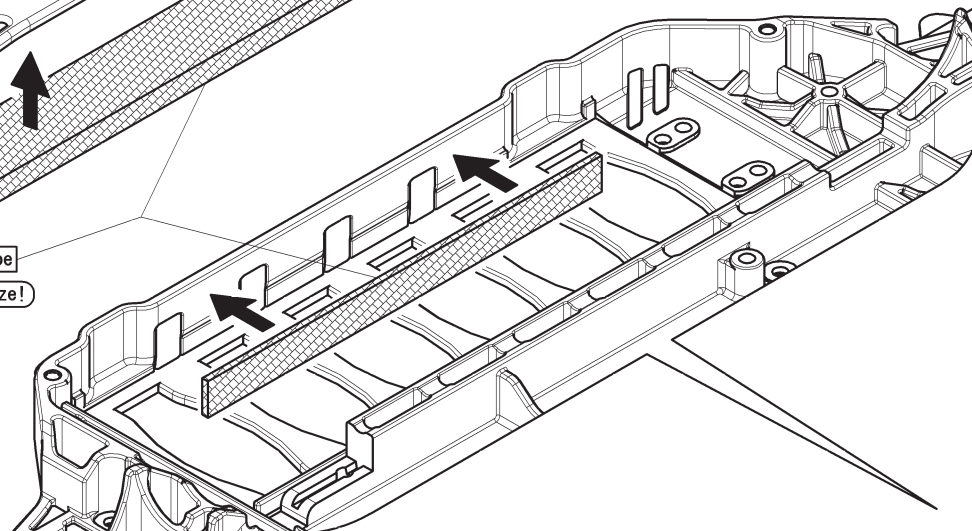
Insert the wheel hub pin into both the front and rear axles. Attach the wheel hub onto the axles so that pin fits into the groove on the hub. Use the M4 nylon locknuts to secure the wheels.



Battery plate

Foam tape
Cut to size!

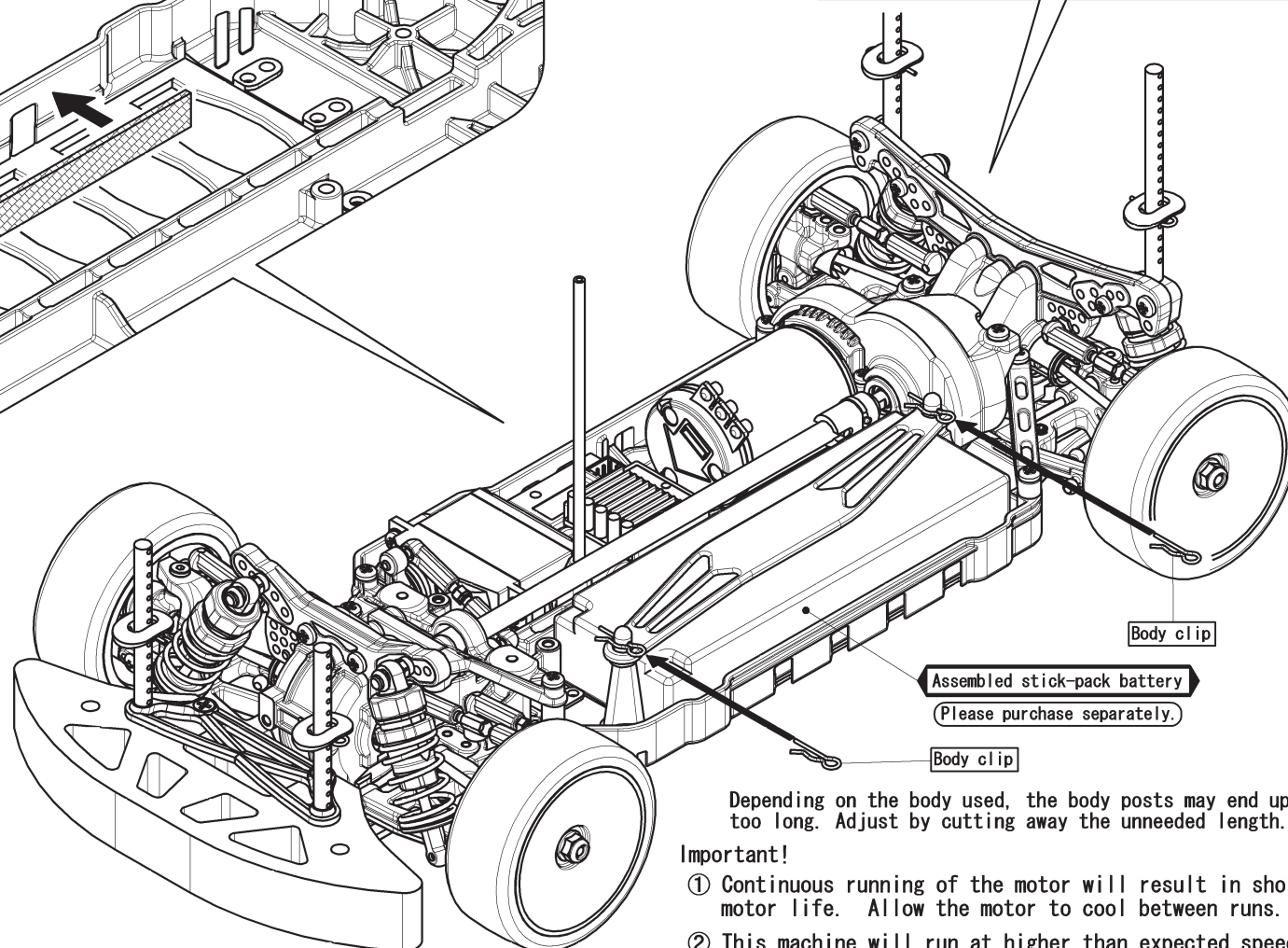
Depending on the type of battery used, a gap may result. Apply the included foam tape, of which there are 3 types, to eliminate any play.



Stick-pack battery

Please purchase separately.

Stick-pack battery can also be used.



Body clip

Assembled stick-pack battery

Please purchase separately.

Body clip

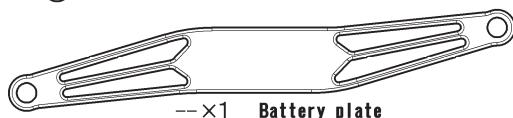
Depending on the body used, the body posts may end up too long. Adjust by cutting away the unneeded length.

Important!

- ① Continuous running of the motor will result in shorter motor life. Allow the motor to cool between runs.
- ② This machine will run at higher than expected speeds, so please exercise caution when running. Choose open, safe areas to run. Enjoy!

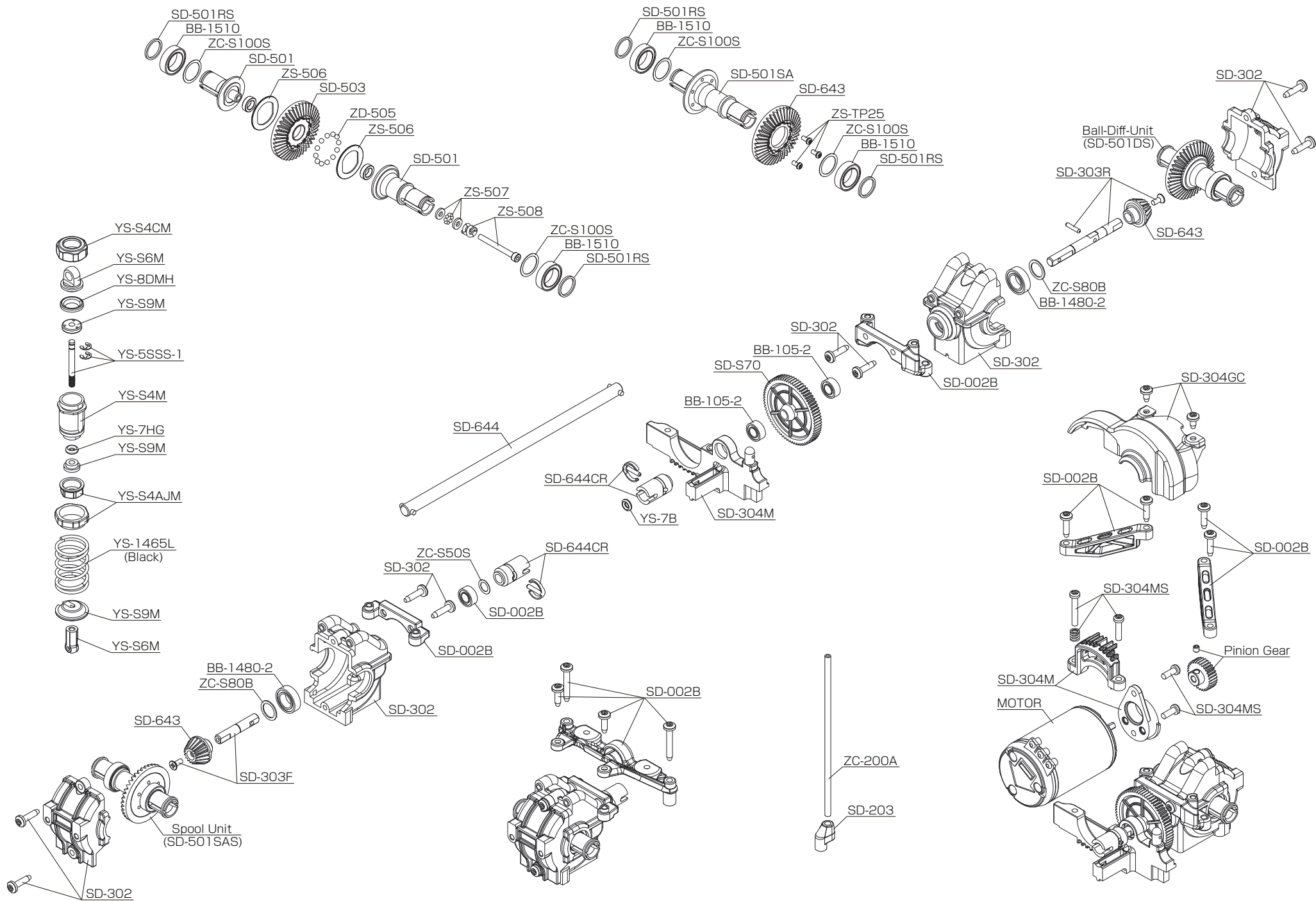
Remaining parts from [Bag-12 Contents]

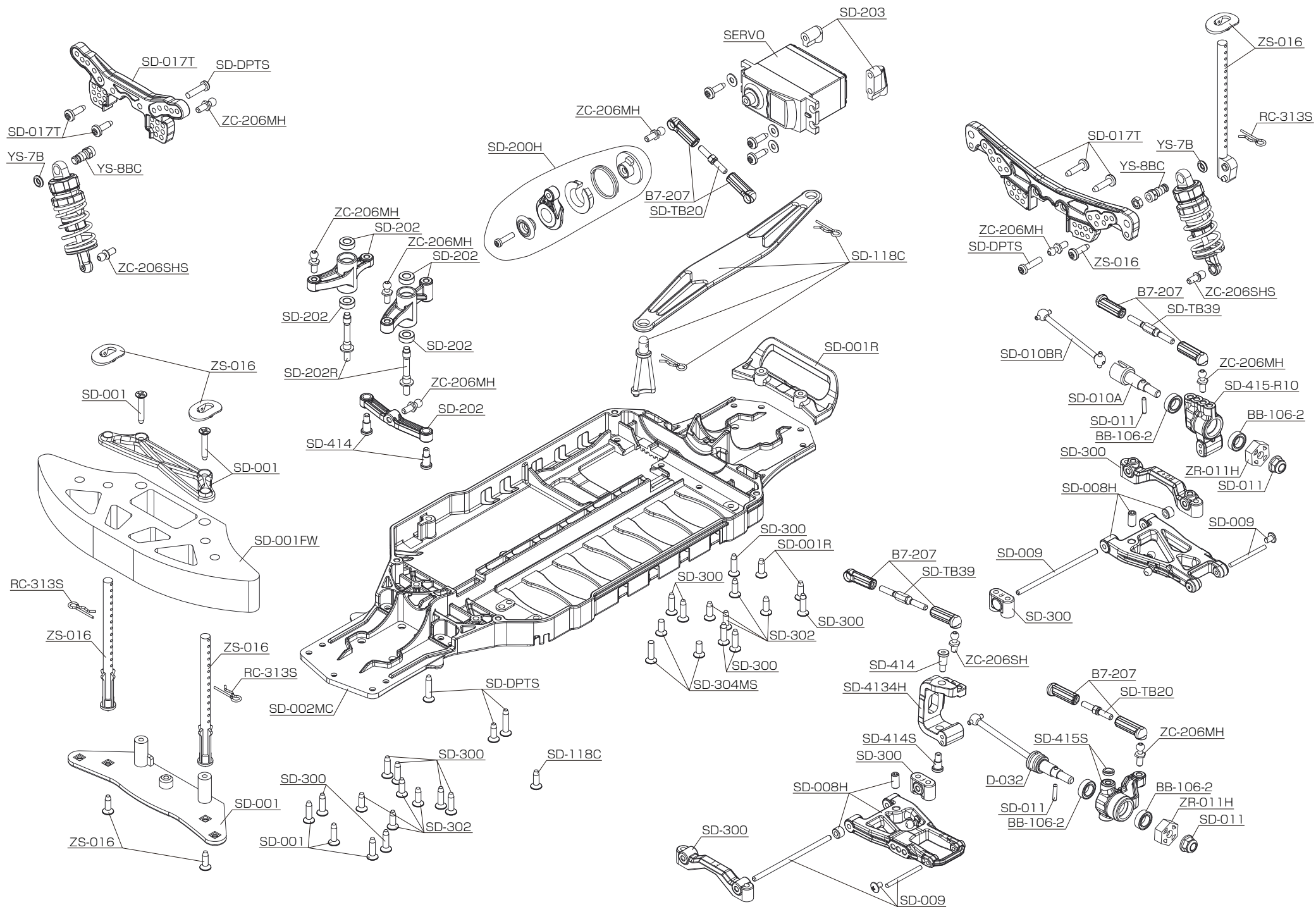
--x2 Body clips



--x1 Battery plate

Also included: foam tape x 3 ea.





◆SD-SPORTS GEAR RATIO (DP48)◆

	I.D.R	SPUR GEAR															
	2.352	68	69	70	71	72	73	74	75	76	77	78	79	80	81	82	83
PINION GEAR	16	9.996	10.143	10.290	10.437	10.584	10.731	10.878	11.025	11.172	11.319	11.466	11.613	11.760	11.907	12.054	12.201
	17	9.408	9.546	9.685	9.823	9.961	10.100	10.238	10.376	10.515	10.653	10.792	10.930	11.068	11.207	11.345	11.483
	18	8.885	9.016	9.147	9.277	9.408	9.539	9.669	9.800	9.931	10.061	10.192	10.323	10.453	10.584	10.715	10.845
	19	8.418	8.541	8.665	8.789	8.913	9.037	9.160	9.284	9.408	9.532	9.656	9.779	9.903	10.027	10.151	10.275
	20	7.997	8.114	8.232	8.350	8.467	8.585	8.702	8.820	8.938	9.055	9.173	9.290	9.408	9.526	9.643	9.761
	21	7.616	7.728	7.840	7.952	8.064	8.176	8.288	8.400	8.512	8.624	8.736	8.848	8.960	9.072	9.184	9.296
	22	7.270	7.377	7.484	7.591	7.697	7.804	7.911	8.018	8.125	8.232	8.339	8.446	8.553	8.660	8.767	8.873
	23	6.954	7.056	7.158	7.261	7.363	7.465	7.567	7.670	7.772	7.874	7.976	8.079	8.181	8.283	8.385	8.488
	24	6.664	6.762	6.860	6.958	7.056	7.154	7.252	7.350	7.448	7.546	7.644	7.742	7.840	7.938	8.036	8.134
	25	6.397	6.492	6.586	6.680	6.774	6.868	6.962	7.056	7.150	7.244	7.338	7.432	7.526	7.620	7.715	7.809
	26	6.151	6.242	6.332	6.423	6.513	6.604	6.694	6.785	6.875	6.966	7.056	7.146	7.237	7.327	7.418	7.508
	27	5.924	6.011	6.098	6.185	6.272	6.359	6.446	6.533	6.620	6.708	6.795	6.882	6.969	7.056	7.143	7.230
	28	5.712	5.796	5.880	5.964	6.048	6.132	6.216	6.300	6.384	6.468	6.552	6.636	6.720	6.804	6.888	6.972
	29	5.515	5.596	5.677	5.758	5.839	5.921	6.002	6.083	6.164	6.245	6.326	6.407	6.488	6.569	6.650	6.732
	30	5.331	5.410	5.488	5.566	5.645	5.723	5.802	5.880	5.958	6.037	6.115	6.194	6.272	6.350	6.429	6.507
	31	5.159	5.235	5.311	5.387	5.463	5.539	5.614	5.690	5.766	5.842	5.918	5.994	6.070	6.146	6.221	6.297
	32	4.998	5.072	5.145	5.219	5.292	5.366	5.439	5.513	5.586	5.660	5.733	5.807	5.880	5.954	6.027	6.101
	33	4.847	4.918	4.989	5.060	5.132	5.203	5.274	5.345	5.417	5.488	5.559	5.631	5.702	5.773	5.844	5.916
	34	4.704	4.773	4.842	4.912	4.981	5.050	5.119	5.188	5.257	5.327	5.396	5.465	5.534	5.603	5.672	5.742
	35	4.570	4.637	4.704	4.771	4.838	4.906	4.973	5.040	5.107	5.174	5.242	5.309	5.376	5.443	5.510	5.578
	36	4.443	4.508	4.573	4.639	4.704	4.769	4.835	4.900	4.965	5.031	5.096	5.161	5.227	5.292	5.357	5.423
	37	4.323	4.386	4.450	4.513	4.577	4.640	4.704	4.768	4.831	4.895	4.958	5.022	5.085	5.149	5.213	5.276
	38	4.209	4.271	4.333	4.395	4.456	4.518	4.580	4.642	4.704	4.766	4.828	4.890	4.952	5.013	5.075	5.137
	39	4.101	4.161	4.222	4.282	4.342	4.402	4.463	4.523	4.583	4.644	4.704	4.764	4.825	4.885	4.945	5.006
	40	3.998	4.057	4.116	4.175	4.234	4.292	4.351	4.410	4.469	4.528	4.586	4.645	4.704	4.763	4.822	4.880

◆SD-SPORTS GEAR RATIO (DP64)◆

	I.D.R	SPUR GEAR																								
	2.352	88	89	90	91	92	93	94	95	96	97	98	99	100	101	102	103	104	105	106	107	108	109	110	111	112
PINION GEAR	22	9.408	9.515	9.622	9.729	9.836	9.943	10.049	10.156	10.263	10.370	10.477	10.584	10.691	10.798	10.905	11.012	11.119	11.225	11.332	11.439	11.546	11.653	11.760	11.867	11.974
	23	8.999	9.101	9.203	9.306	9.408	9.510	9.613	9.715	9.817	9.919	10.022	10.124	10.226	10.328	10.431	10.533	10.635	10.737	10.840	10.942	11.044	11.146	11.249	11.351	11.453
	24	8.624	8.722	8.820	8.918	9.016	9.114	9.212	9.310	9.408	9.506	9.604	9.702	9.800	9.898	9.996	10.094	10.192	10.290	10.388	10.486	10.584	10.682	10.780	10.878	10.976
	25	8.279	8.373	8.467	8.561	8.655	8.749	8.844	8.938	9.032	9.126	9.220	9.314	9.408	9.502	9.596	9.690	9.784	9.878	9.972	10.067	10.161	10.255	10.349	10.443	10.537
	26	7.961	8.051	8.142	8.232	8.322	8.413	8.503	8.594	8.684	8.775	8.865	8.956	9.046	9.137	9.227	9.318	9.408	9.498	9.589	9.679	9.770	9.860	9.951	10.041	10.132
	27	7.666	7.753	7.840	7.927	8.014	8.101	8.188	8.276	8.363	8.450	8.537	8.624	8.711	8.798	8.885	8.972	9.060	9.147	9.234	9.321	9.408	9.495	9.582	9.669	9.756
	28	7.392	7.476	7.560	7.644	7.728	7.812	7.896	7.980	8.064	8.148	8.232	8.316	8.400	8.484	8.568	8.652	8.736	8.820	8.904	8.988	9.072	9.156	9.240	9.324	9.408
	29	7.137	7.218	7.299	7.380	7.462	7.543	7.624	7.705	7.786	7.867	7.948	8.029	8.110	8.191	8.273	8.354	8.435	8.516	8.597	8.678	8.759	8.840	8.921	9.002	9.084
	30	6.899	6.978	7.056	7.134	7.213	7.291	7.370	7.448	7.526	7.605	7.683	7.762	7.840	7.918	7.997	8.075	8.154	8.232	8.310	8.389	8.467	8.546	8.624	8.702	8.781
	31	6.677	6.753	6.828	6.904	6.980	7.056	7.132	7.208	7.284	7.359	7.435	7.511	7.587	7.663	7.739	7.815	7.891	7.966	8.042	8.118	8.194	8.270	8.346	8.422	8.498
	32	6.468	6.542	6.615	6.689	6.762	6.836	6.909	6.983	7.056	7.130	7.203	7.277	7.350	7.424	7.497	7.571	7.644	7.718	7.791	7.865	7.938	8.012	8.085	8.159	8.232
	33	6.272	6.343	6.415	6.486	6.557	6.628	6.700	6.771	6.842	6.913	6.985	7.056	7.127	7.199	7.270	7.341	7.412	7.484	7.555	7.626	7.697	7.769	7.840	7.911	7.983
	34	6.088	6.157	6.226	6.295	6.364	6.433	6.503	6.572	6.641	6.710	6.779	6.848	6.918	6.987	7.056	7.125	7.194	7.264	7.333	7.402	7.471	7.540	7.609	7.679	7.748
	35	5.914	5.981	6.048	6.115	6.182	6.250	6.317	6.384	6.451	6.518	6.586	6.653	6.720	6.787	6.854	6.922	6.989	7.056	7.123	7.190	7.258	7.325	7.392	7.459	7.526
	36	5.749	5.815	5.880	5.945	6.011	6.076	6.141	6.207	6.272	6.337	6.403	6.468	6.533	6.599	6.664	6.729	6.795	6.860	6.925	6.991	7.056	7.121	7.187	7.252	7.317
	37	5.594	5.658	5.721	5.785	5.848	5.912	5.975	6.039	6.102	6.166	6.230	6.293	6.357	6.420	6.484	6.547	6.611	6.675	6.738	6.802	6.865	6.929	6.992	7.056	7.120
	38	5.447	5.509	5.571	5.632	5.694	5.756	5.818	5.880	5.942	6.004	6.066	6.128	6.189	6.251	6.313	6.375	6.437	6.499	6.561	6.623	6.685	6.747	6.808	6.870	6.932
	39	5.307	5.367	5.428	5.488	5.548	5.609	5.669	5.729	5.790	5.850	5.910	5.970	6.031	6.091	6.151	6.212	6.272	6.332	6.393	6.453	6.513	6.574	6.634	6.694	6.754
	40	5.174	5.233	5.292	5.351	5.410	5.468	5.527	5.586	5.645	5.704	5.762	5.821	5.880	5.939	5.998	6.056	6.115	6.174	6.233	6.292	6.350	6.409	6.468	6.527	6.586
	41	5.048	5.106	5.163	5.220	5.278	5.335	5.392	5.450	5.507	5.564	5.622	5.679	5.737	5.794	5.851	5.909	5.966	6.023	6.081	6.138	6.196	6.253	6.310	6.368	6.425
	42	4.928	4.984	5.040	5.096	5.152	5.208	5.264	5.320	5.376	5.432	5.488	5.544	5.600	5.656	5.712	5.768	5.824	5.880	5.936	5.992	6.048	6.104	6.160	6.216	6.272
	43	4.813	4.868	4.923	4.977	5.032	5.087	5.142	5.196	5.251	5.306	5.360	5.415	5.470	5.524	5.579	5.634	5.689	5.743	5.798	5.853	5.907	5.962	6.017	6.071	6.126
	44	4.704	4.757	4.811	4.864	4.918	4.971	5.025	5.078	5.132	5.185	5.239	5.292	5.345	5.399	5.452	5.506	5.559	5.613	5.666	5.720	5.773	5.827	5.880	5.933	5.987
	45	4.599	4.652	4.704	4.756	4.809	4.861	4.913	4.965	5.018	5.070	5.122	5.174	5.227	5.279	5.331	5.383	5.436	5.488	5.540	5.593	5.645	5.697	5.749	5.802	5.854
	46	4.499	4.551	4.602	4.653	4.704	4.755	4.806	4.857	4.909	4.960	5.011	5.062	5.113	5.164	5.215	5.266	5.318	5.369	5.420	5.471	5.522	5.573	5.624	5.675	5.727
	47	4.404	4.454	4.504	4.554	4.604	4.654	4.704	4.754	4.804	4.854	4.904	4.954	5.004	5.054	5.104	5.154	5.204	5.254	5.305	5.355	5.405	5.455	5.505	5.555	5.605
	48	4.312	4.361	4.410	4.459	4.508	4.557	4.606	4.655	4.704	4.753	4.802	4.851	4.900	4.949	4.998	5.047	5.096	5.145	5.194	5.243	5.292	5.341	5.390	5.439	5.488
	49	4.224	4.272	4.320	4.368	4.416	4.464	4.512	4.560	4.608	4.656	4.704	4.752	4.800	4.848	4.896	4.944	4.992	5.040	5.088	5.136	5.184	5.232	5.280	5.328	5.376
	50	4.140	4.187	4.234	4.281	4.328	4.375	4.422	4.469	4.516	4.563	4.610	4.657	4.704	4.751	4.798	4.845	4.892	4.939	4.986	5.033	5.080	5.127	5.174	5.221	5.268

MEMO

[illegible]

AS A MANUFACTURER OF WORLD CHAMPIONSHIP WINNING CARS,
YOKOMO WILL CONTINUE TO PROVIDE THE BEST AVAILABLE TECHNOLOGY TO R/C ENTHUSIASTS ALL OVER THE WORLD.
ENJOY THIS PRODUCT KNOWING THAT YOU ARE DRIVING ONE OF THE BEST HANDLING R/C CARS EVER DESIGNED.



世界のブランド YOKOMO

ヨコモは競技用 R/C カー（ラジオコントロールカー）の専門メーカーです。その製品は、全日本選手権、全米選手権、ヨーロッパ選手権、そして R/C カーレースの最高峰である世界選手権レースでも優勝。世界の R/C カーマニアに愛用されています。